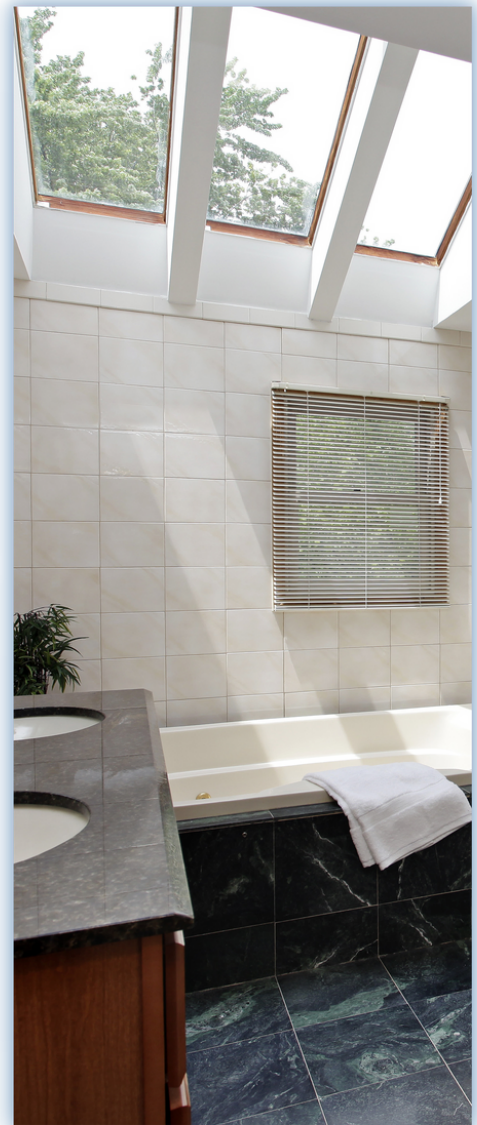
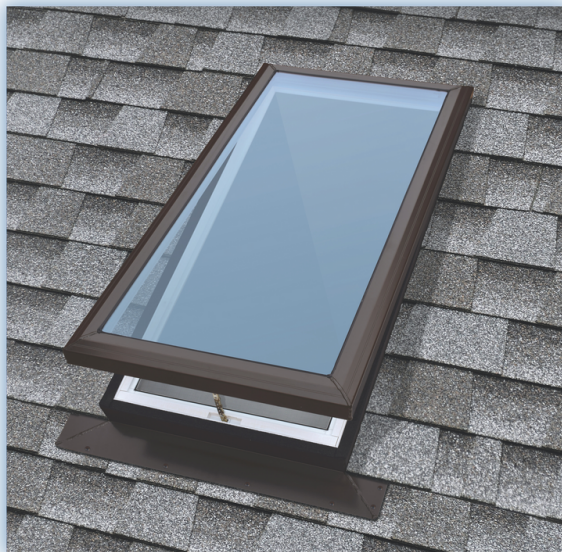




Kennedy  
**Skylights™**

*Beauty, Quality, Affordability*

**Brochure**



800.280.2545 | [KennedySkylights.com](http://KennedySkylights.com)

## Table of Contents



### **Glass** | Superior Performing Glass Skylights

Curb Mount / CMG .....	4
Self-Flashing / SFG .....	5
Self-Flashing Ventilating / SFVG .....	6
Self-Flashing Solar Ventilating / SFSVG .....	7
Accessories .....	8

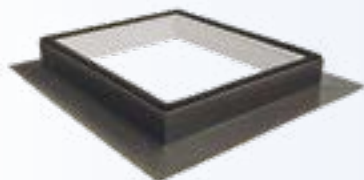
4



### **Polycarbonate** | High Impact Polycarbonate Skylights

Curb Mount / CM / CMA / HCMA .....	10
Self-Flashing Aluminum / SFA / SFAW / HSFAW .....	11
Self-Flashing / SF .....	12

10



### **Aluminum Curbs** | Pre-Built Curbs

Powder-Coated Aluminum / AC .....	13
Aluminum Exterior w/Wood Interior / ACW .....	13
Mill-Finish Exterior w/Wood Interior / ACWU .....	13

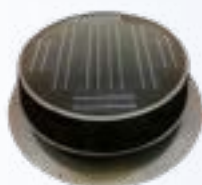
13



### **Tubular Skylights** | Highly Efficient Daylighting System

Pitched Roof .....	15
Flat Roof .....	15
Curb Mount .....	15
Tubular Accessories .....	16
EZ Series .....	17
EZ Series Accessories .....	18

15



### **Solar Attic Fans** | Solar Powered Attic Venting System

Ultra Low Profile .....	20
Roof Mount .....	20
Curb Mount .....	21
Gable Mount .....	21
Accessories .....	22

20

## Welcome to the World of Kennedy Skylights

Kennedy Skylights offer Architects, Builders, Contractors, Distributors, and Roofing Dealers eco-friendly building options for increasing a home's aesthetic and intrinsic value – affordably and comfortably.

Since 1964, the Kennedy brand has been renowned for producing the highest-quality traditional skylights at an affordable price-point. Now in addition to our fine-quality LoE-240 glass and exceptionally durable polycarbonate skylights, we offer highly-versatile tubular skylights along with solar powered attic fans.

All products can be used without any reliance on man-made energy sources. All products are manufactured in the U.S. And all products meet the rigorous requirements of Florida Building Code standards.

## Seven Reasons to Choose Kennedy Skylights and Solar Powered Attic Fans:

- 1 Numerous research studies have shown natural light can increase one's sense of wellbeing, energy, and mood
- 2 Natural light transmitted through Kennedy's skylights allows home furnishings, carpets, and room colors to appear truer than artificial light and without the risk of fading from UV rays
- 3 Kennedy's skylights illuminate rooms without the heat associated with incandescent bulbs, lowering both lighting and air conditioning costs
- 4 Kennedy's solar powered attic fans help prolong the lifespan of shingles and underlayment while reducing A/C loads – again saving money on utilities and repairs
- 5 Solar powered attic fans help equalize attic temperatures and reduce "hot spots" which can contribute to uneven snow melt and ice damming on eaves
- 6 Kennedy's skylights and solar powered attic fans can qualify homeowners for energy related federal and state income tax credits
- 7 All Kennedy products are manufactured in America, using the highest quality materials, and are Florida Building Code approved



*Homeowners, with Kennedy products installed, can save money on their lighting, cooling, and repair bills while making their homes more attractive and inviting.*



## Kennedy Glass

High Quality and Performance in an Affordable Glass Skylight

Our superior performing glass skylight is available in several models, glazing options, and standard sizes. Custom sizes are also available.

### GLASS PERFORMANCE:

- Features LoE-240 coating with Argon-filled glass
- High performance ratings for light transmission, solar heat gain, U-factor, and fading transmission
- Three glazing options available: Tempered, Laminated or High Impact (Hurricane rated)
- Advanced technology dual-seal silicone system with patented stainless steel spacers

### KEY FEATURES:

- .062 extruded aluminum for extra durability
- Welded corners for added strength and leak-proof protection
- Powder coated "Architectural Bronze" exterior, custom colors available
- Easy-release, continuous hinge secures skylight frame to curb for quick removal
- Hinge designed to divert water away from skylight
- Includes a full perimeter condensation gutter
- Fits any roof pitch and adapts to most roofing systems

### 3 MODEL CATEGORIES TO CHOOSE FROM:

- Self-Flashing Fixed Glass - 2", 4", or 6" high curb (SFG)
- Self-Flashing Ventilating Glass - 4" or 6" high curb (SFVG)
- Curb-Mount - standard (CMG) or hurricane model (MD-ICMG)

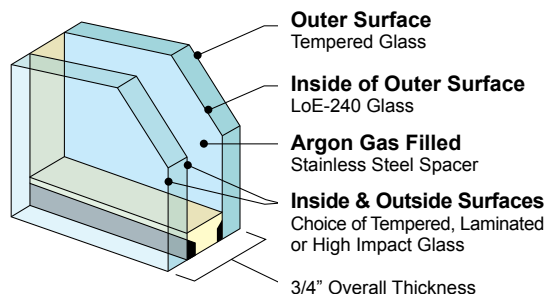
### CERTIFICATIONS AND WARRANTY:

- Certified to meet or exceed performance criteria defined by AAMA/WDMA 1600/I.S. 2-200 (non-ventilating models)
- Florida Building Code Approved
- NAMI Participant - Quality Assurance Program
- ENERGY STAR® Qualified
- 25-Year Non-Prorated Warranty

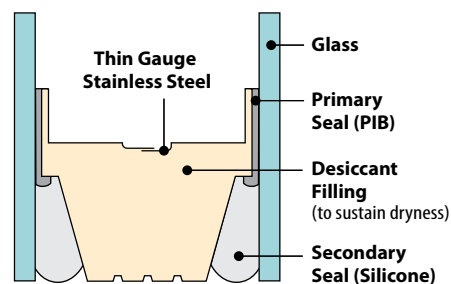


Skylight Glass	Visible Light Transmission	Solar Heat Gain	U-Factor	Fading Transmission
Single, tint	68%	.73	1.11	.38
Double, tint	62%	.62	0.49 / 0.47	.32
Double, tint & LoE	57%	.56	0.35 / 0.31	.25
<b>Kennedy Glass</b>	<b>40%</b>	<b>.25</b>	<b>0.30 / 0.26</b>	<b>.16</b>

### LoE-240 Skylight Glass



### Dual-Seal System



*The success rate of our patented dual-seal system is 99.5% over 20 years based on actual seal failure reporting.*



## Curb Mount Glass Skylight

No Curb Included

### KEY FEATURES:

- Meets the stringent requirements of the Florida Building Code
- High performance glass
- .063" extruded aluminum exterior with welded corners
- Oversized to fit most curbs
- ENERGY STAR® Qualified in all 50 states

### GLASS CHOICES:

- Tempered, LoE-240 Argon-Filled Glass
- Laminated, LoE-240 Argon-Filled Glass
- High Impact, Hurricane Rated LoE-240 Argon Filled Glass

### COLOR CHOICES AND OPTIONS:

- "Patrician Bronze" powder coated exterior
- Custom colors and sizes available
- Optional aluminum curb available - mounts on AC/ACW/ACWU models (see curb section for details)

### WARRANTY:

- 25-Year non-prorated limited warranty on insulated glass against seal failure
- 10-Year limited warranty against defects in workmanship and materials



No Minimum Pitch Required									
Size Code	1430	1446	2222	2230	2246	2269	3030	3046	4646
Outside Curb Dimensions †	17.5" x 33.5"	17.5" x 49.5"	25.5" x 25.5"	25.5" x 33.5"	25.5" x 49.5"	25.5" x 72.5"	33.5" x 33.5"	33.5" x 49.5"	49.5" x 49.5"

†CMG models are manufactured 1" larger than the outside curb dimension to allow for flashing material.



## Self-Flashing Fixed Glass Skylight

| 2" | 4" | 6" | Curbs | *2" Min 4:12 Pitch*  
*4" & 6" for flat roof applications*

### KEY FEATURES:

- Meets the stringent requirements of the Florida Building Code
- High performance glass
- Drywall return sized for both 1/2" and 5/8" drywall
- .062" extruded aluminum exterior with welded corners
- Integrated 4" flange with pre-drilled screw holes
- ENERGY STAR® Qualified in all 50 states

### GLASS CHOICES:

- Tempered, LoE-240 Argon-Filled Glass (standard - no upcharge)
- Laminated, LoE-240 Argon-Filled Glass
- High Impact, Hurricane Rated, LoE-240 Argon-Filled Glass

### COLOR CHOICES:

- "Patrician Bronze" powder coated exterior
- Pre-finished white wood interior
- Natural wood interior is optional
- Custom colors and sizes available

### WARRANTY:

- 25-Year non-prorated limited warranty on insulated glass against seal failure
- 10-Year limited warranty against defects in workmanship and materials



Min 3:12 Pitch Not for Vertical Applications.												
Size Code	1430	1446	2138	2146	2222	2230	2246	4622	2269	3030	3046	4646
Rough Opening	14.5"x30.5"	14.5"x46.5"	21"x37.875"	21"x45.75"	22.5"x22.5"	22.5"x30.5"	22.5"x46.5"	46.5"x22.5"	22.5"x69.5"	30.5"x30.5"	30.5"x46.5"	46.5"x46.5"





## Self-Flashing Ventilating Glass Skylight

| 4" | 6" | Curbs

### Key Features:

- High performing LoE-240 Argon-filled glass
- .062" extruded aluminum exterior with welded corners
- Extra-wide 4" flashing with pre-drilled screw holes
- Opens up to 8" - insect screen included
- Easy-release continuous hinge for quick replacement of sash

### LoE-240 Argon-Filled Glass Choices:

- Tempered (standard) - TSFVG
- Laminated - LSFVG

### Color Choices and Options:

- "Architectural Bronze" powder coated exterior
- Custom exterior colors and sizes available
- Pre-finished white wood interior
- Natural wood interior also available
- Telescopic pole which extends 6' to 10'
- Optional Remote Control and Rain Sensor available

### Warranty:

- 25-year non-prorated limited warranty
- Florida Building Code Approved



Min 3:12 Pitch Not for Vertical Applications.								
<b>Size Code</b>	2222	2230	2246	4622	2269	3030	3046	4646
<b>Outside Curb Dimensions</b>	22.5"x22.5"	22.5"x30.5"	22.5"x46.5"	46.5"x22.5"	22.5"x69.5"	30.5"x30.5"	30.5"x46.5"	46.5"x46.5"



## Self-Flashing Solar Ventilating Glass Skylight



### KEY FEATURES:

- High performance glass
- Opens up to 8" and includes an insect screen
- Requires no wiring, which makes for easy and cost effective installation
- Rain sensor will close the skylight automatically if inclement weather approaches
- Hand crank or telescoping pole optional
- Drywall return sized for both 1/2" and 5/8" drywall
- .062" extruded aluminum exterior with welded corners
- Integrated 4" flange with pre-drilled screw holes
- SFSVG6 works on a 0:12 to 68:12 roof pitch
- 30% federal tax credit on both product and installation

### GLASS CHOICES:

- Tempered, LoE-240 Argon-Filled Glass (standard - no upcharge)
  - Laminated, LoE-240 Argon-Filled Glass
- Note:** Impact Glass not available

### COLOR CHOICES:

- "Patrician Bronze" powder coated exterior
- Pre-finished white wood interior

### CUSTOM OPTIONS:

- Natural wood interior
- Custom exterior colors and sizes available

### WARRANTY:

- 25-Year warranty on the glass
- 10-Year warranty on the solar smart operation



2138

2146

2222

2230

2246

4622

2269

3030

3046

4646





## Accessories for Self-Flashing Ventilating Glass Skylight

### Electrical Operator:

- Powerful, completely motorized drive system
- RF remote adds extended control and functionality
- Capable of lifting our heaviest and largest skylight
- Features Power Protected Memory - eliminates the need to reset motor after a power-outage
- Rain Sensor automatically closes skylights upon detecting moisture
- 1-Year Warranty against defects in materials and workmanship



### Remote Controls:

- Adds flexibility and convenience
- Single remote can control up to 3 skylights
- Zones can be defined to control groups of skylights
- Features "rolling codes" technology used on garage door openers



### Skylight Shades:

- Two neutral colors available to match any home decor
- Almond - Loose Weave (37% reflectivity)
- Parchment - Tight Weave (65% reflectivity)
- Choose from manual or motorized versions
- Very low maintenance
- Available for all glass skylights



### Extension Poles:

- Used in elevated settings
- Manually operated
- Easy-to-use with smooth-turning operation
- Telescopic pole adjusts from 6 to 10 feet
- Stores easily



## Kennedy Polycarbonate

### Highly Durable, Low-Cost Alternative to Glass Skylights

Polycarbonate skylights are made from a co-extruded polycarbonate plastic sheet and are available in standard sizes to accommodate all roofing systems. We also manufacture two hurricane-rated models.

#### Key Features:

- Highly impact resistant - virtually unbreakable
- Sized to fit standard US truss and rafter framing
- Low profile co-extruded polycarbonate
- Energy efficient double-dome construction
- High clarity and light transmission
- Blocks harmful UV radiation
- Lightweight - easy to handle and install

#### Polycarbonate Advantage:

- 30-times more impact resistant than acrylic skylights
- 250-times more impact resistant than glass
- Resists temperature extremes from -60°F to +250°F
- Superior weathering performance
- 80% less yellowing than non co-extruded sheets

#### Model Categories to Choose From:

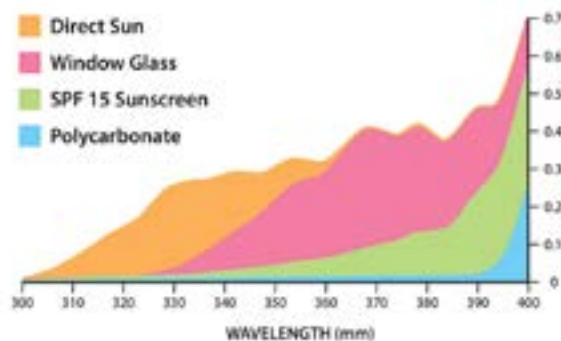
- Self-Flashing - no curb required (SF)
- Self-Flashing - 4" or 6" high curb with Styrofoam liner (SFA) or white wood interior (SFAW)
- Curb-Mount - standard (CM) or with aluminum deco ring (CMA)
- Hurricane Zone - Self-Flashing (HSFAW) or Curb-Mount (HCMA) with hurricane rated, welded aluminum ring

#### Certifications and Warranty:

- Certified to meet or exceed performance criteria defined by AAMA/WDMA 1600/I.S. 2-200
- Florida Building Code Approved for large missile impact
- NAMI Participant - Quality Assurance Program
- Class V2 Fire Rated
- 10-Year Limited Warranty against defects in workmanship and materials



#### BLOCKS HARMFUL UV RAYS



*The Sentry Skylight co-extruded polycarbonate blocks out more harmful UV radiation than SPF 15 sunscreen!*





## Curb Mount Polycarbonate (CM / CMA)

Mounts to Kennedy AC, ACW, or existing curb

- Co-extruded polycarbonate dome
- Bronze tinted outer with clear inner panel
- Pre-drilled screw holes for easy installation
- Available with aluminum deco ring (CMA) or without (CM)
- Single dome and diffused panel available on select sizes
- Florida Building Code Approved #15592.1
- 10-Year Limited Warranty



## Hurricane Approved Curb Mount (HCMA)

Mounts to Kennedy AC, ACW, or existing curb

- Co-extruded polycarbonate dome
- Hurricane rated .062" extruded welded aluminum ring in powder coated "Architectural Bronze"
- Pre-drilled screw holes for easy installation
- Bronze tinted outer with clear inner panel
- Single dome and diffused panel available on select sizes
- Approved for all wind zones
- 10-Year Limited Warranty
- Florida Building Code approved



No Minimum Pitch Required. Not for Vertical Applications.											
<b>Size Code</b>	1414	1422	1430	1446	2222	2230	2246	2269	3030	3046	4646
<b>Outside Curb Dimensions †</b>	17.5" x 17.5"	17.5" x 25.5"	17.5" x 33.5"	17.5" x 49.5"	25.5" x 25.5"	25.5" x 33.5"	25.5" x 49.5"	25.5" x 72.5"	33.5" x 33.5"	33.5" x 49.5"	49.5" x 49.5"

Minimum 3½ Inch Curb Required

†CMG models are manufactured 1" larger than the outside curb dimension to allow for flashing material.





## Self-Flashing Aluminum (SFA / SFAW)

| 4" | 6" | Curbs

- Co-extruded polycarbonate dome
- .062" extruded aluminum curb with welded corners
- Powder coated "Architectural Bronze" exterior with predrilled screw holes
- Bronze tinted outer with clear inner panel
- SFA has energy-efficient Styof foam liner - ideal for new construction
- SFAW has pre-finished white wood interior - perfect for re-roofing
- Class V2 Fire Rated; 10-year Limited Warranty
- Florida Building Code Approved #15592.1



## Hurricane Approved Self-Flashing (HSFAW)

| 4" | 6" | Curbs

- Co-extruded polycarbonate plastic sheet
- .062" extruded aluminum frame with welded corners
- Powder coated "Architectural Bronze" exterior with predrilled screw holes
- Bronze tinted outer with clear inner panel
- Natural wood finish interior and custom exterior colors available
- HSFAW has pre-finished white wood interior - perfect for re-roofing
- Class V2 Fire Rated; 10-year Limited Warranty
- Florida Building Code Approved #15592.3



No Min Pitch Required Not for Vertical Applications.											
Size Code	1414	1422	1430	1446	2222	2230	2246	2269	3030	3046	4646
Outside Curb Dimensions	14.5" x 14.5"	14.5" x 22.5"	14.5" x 30.5"	14.5" x 46.5"	22.5" x 22.5"	22.5" x 30.5"	22.5" x 46.5"	22.5" x 69.5"	30.5" x 30.5"	30.5" x 46.5"	46.5" x 46.5"



## Self-Flashing Polycarbonate Domed Skylight

No Curb Required

### Key Features:

- Co-extruded polycarbonate dome
- Bronze tinted outer with clear inner panel
- Self-flashing for easy, leakproof installation
- 4" Pre-drilled integral nailing flange
- Mounts between shingles and roof decking

### Polycarbonate Advantages:

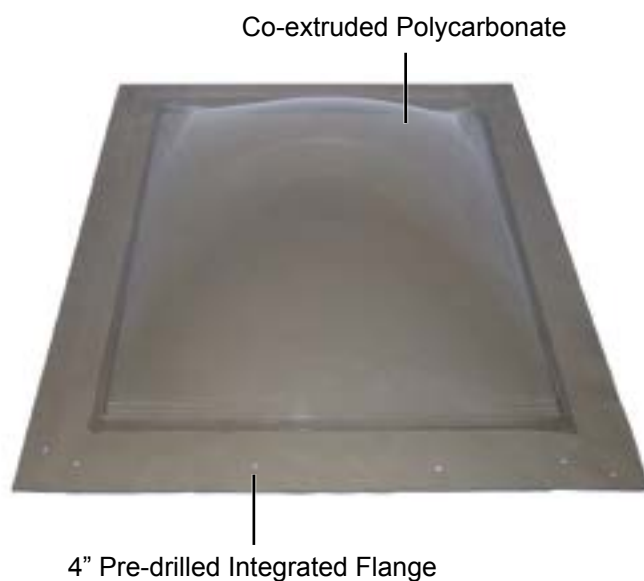
- 30-times more impact resistant than acrylic skylights
- 250-times more impact resistant than glass
- Resists temperature extremes from -60°F to +250°F
- Superior weathering performance
- Resists effects of solar UV radiation

### Available Options:

- Single dome
- Diffused inner panel available on some sizes

### Warranty:

- Florida Building Code Approved #15592.5
- Class V2 Fire Rated
- 10-year limited warranty against defects in workmanship and materials



Min 3:12 Pitch Not for Vertical Applications.											
<b>Size Code</b>	1414	1422	1430	1446	2222	2230	2246	2269	3030	3046	4646
<b>Outside Curb Dimensions</b>	14.5" x 14.5"	14.5" x 22.5"	14.5" x 30.5"	14.5" x 46.5"	22.5" x 22.5"	22.5" x 30.5"	22.5" x 46.5"	22.5" x 69.5"	30.5" x 30.5"	30.5" x 46.5"	46.5" x 46.5"

## Aluminum Curbs (6" Curbs Needed for Flat Roof Applications)

### Saves Time and Simplifies Skylight Installation

Kennedy curbs work with many brands of plastic or glass curb-mount skylights and match our CMG, CM, CMA, and HCMA skylight models. Custom paint colors and sizes are available. All curbs have a 10-year limited warranty against defects in workmanship and materials.



### Aluminum Curb - Standard (AC)

| 4" | 6" | Curbs

- Curb for replacing flashing on existing skylights
- .062" extruded aluminum frame with welded corners
- Powder coated "Architectural Bronze" exterior with predrilled screw holes



### Aluminum Curb - Wood Interior (ACW)

| 4" | 6" | Curbs

- Prefinished, insulating white wood interior comes standard
- .062" extruded aluminum frame with welded corners
- Powder coated "Architectural Bronze" exterior with predrilled screw holes
- Hand-selected, stain-grade wood interior also available



### Aluminum Curb - Mill Finish (ACWU)

| 4" | 6" | Curbs

- Insulating Spruce wood interior, unfinished exterior
- Economical curb for all roof pitches
- Perfect for unfinished areas like attics and garages or new construction
- .062" extruded aluminum frame with welded corners
- Predrilled screw holes for easy installation



No Min Pitch Required Not for Vertical Applications.											
Size Code	1414	1422	1430	1446	2222	2230	2246	2269	3030	3046	4646
Outside Curb Dimensions †	17.5" x 17.5"	17.5" x 25.5"	17.5" x 33.5"	17.5" x 49.5"	25.5" x 25.5"	25.5" x 33.5"	25.5" x 49.5"	25.5" x 72.5"	33.5" x 33.5"	33.5" x 49.5"	49.5" x 49.5"



# TUBULAR SKYLIGHTS

## Kennedy Tubular Skylights

### More Light Transmission with Lower Labor/Installation Costs

Tubular Skylights offer architects and homeowners affordable, day-lighting options in rooms where the installation of a window or adding additional windows isn't practical. Unlike traditional skylights, our tubular skylights use a "light pipe" to collect the Sun's rays without transferring the Sun's heat. And it's the light pipe technology that makes all of the difference!

#### How it Works:

As sunlight enters through the skylight dome, the rays bounce downward inside the light pipe until emitted through the ceiling's diffuser, with very little light loss – even for light pipe tubes as long as 20 feet.

#### Key Features:

- Installs easily with no structural changes or wiring required
- Fits all roof types and slopes
- Available in pitched, flat, or curb mount models
- Designed to perform optimally from sunup to sundown
- Disperses light evenly while blocking 99% of harmful UV rays
- Condensation release dome prevents fogging due to humidity

#### Superior Construction:

- High-Impact Acrylic Dome – with stress collar to prevent dome from cracking under temperature fluctuations
- Commercial Grade Aluminum Flashing – heavy-duty, seamless, and leak proof
- Light Pipe – silver coated aluminum, 98% total reflectivity
- Prismatic or Soft White Diffuser – disperses light evenly without spot lighting or glare
- White Ceiling Trim Ring – blends into any decor

#### Certifications and Warranty:

- Hurricane Tested and Approved
- Florida Building Code Approved
- ICC-ES Listed
- May Qualify for Local, State or Federal Tax Credits
- 25-Year Product Warranty



*"...installed 5 solar tubes with the light fixture, and all of them exceed our expectations...5 stars..."*

*– Paul B., Chula Vista, CA*

#### Tubular Skylights are Perfect for:

- Bathrooms
- Closets
- Laundry Room
- Hallways
- Stairwells
- Kitchen
- Family Room
- Home Office
- Loft
- Garage

Model	Coverage	Wattage	Max Tube Length
10"	up to <b>150</b> sf	up to <b>300</b> watts	18 feet
13"	up to <b>300</b> sf	up to <b>500</b> watts	20 feet
18"	up to <b>500</b> sf	up to <b>1,000</b> watts	20 feet



## Pitched Roof Tubular Skylight

| 10" | 13" | 18" | Models

- Powder-coated "Architectural Bronze" aluminum flashing - custom colors available
- Forward sloping design allows for easy installation without the need for angle adapters
- Fits all roof slopes
- Installs on all roof types including shingle, wood shake, and tile
- Kit includes all components and hardware for a 4' installation
- Choice of prismatic or soft white diffusers - curved or flat styles



## Flat Roof Tubular Skylight

| 10" | 13" | 18" | Models

- Powder-coated "Architectural Bronze" aluminum flashing - custom colors available
- Used for flat or low sloping roof applications
- Unique round shape allows for easy installation without disturbing much of roofing material
- Kit includes all components and hardware for a 4' installation
- Choice of prismatic or soft white diffusers - curved or flat styles



## Curb Mount Tubular Skylight

| 10" | 13" | 18" | Models

- Powder-coated "Architectural Bronze" aluminum flashing - custom colors available
- Square shape allows for easy installation over pre-built curb
- Kit includes all components and hardware for a 4' installation
- Choice of prismatic or soft white diffusers - curved or flat styles
- Florida Building Code Approved #11743.1, #11743.2, & #11743.3





## Tubular Skylight Accessories

### Electric Light Kit:

- Available for 10", 13", and 18" models
- For use during extremely cloudy days or night time
- Single and dual bulb options available
- Use with CFL (compact fluorescent) or LED light bulbs



### Dimmer Kit with Remote Control:

- Available for 10", 13", and 18" models
- Remote controls the internal dimmer panel to be fully open, partially closed, or fully closed
- May be hard-wired using a momentary switch



### Exhaust Vent Kit:

- Available for the 10" model
- Perfect for bathrooms and laundry rooms
- Intake vent hidden from view by decorative trim ring
- Extremely quiet motor exhausts 125 cfms
- Flexible tubing provides various venting options
- May be installed in conjunction with the light kit



### 12" Angle Adapter/Elbow:

- For installations where a straight run of pipe is impossible
- Adjusts from 0 to 45 degrees for the 10" and 13" models
- Adjusts from 0 to 30 degrees for the 18" model
- Same highly reflective mirror finish as light pipe



### Light Pipe Extensions:

- Extra sections of light pipe available in 12" and 24" lengths
- Same highly reflective mirror finish as light pipe

### Flashing Skirt and Turret Extension for Tile Roofs:

- Flashing skirt available for 10", 13", and 18" models
- Turret extension is also available for higher profile S-tile roofs for 10" and 13" models







## Composite Flashing Rigid Tubular Skylight Kit

| 10" | 14" | Models

The Kennedy Rigid Tubular Skylights are designed for attic spaces with long straight runs. These rigid tubular skylights funnel that light directly into your home. They are built with the highest quality materials. The patented diffuser allows the natural light to be evenly distributed in the room where it is installed.

MODEL #	PRODUCT DESCRIPTION
EZ10SCANH	10" Composite Flashing Rigid Kit (output up to 150 sf)
EZ14SCANH	14" Composite Flashing Rigid Kit (output up to 300 sf)



## Composite Flashing Flex Tubular Skylight Kit

| 14" | Models

The Kennedy Flex Tubular Skylights are designed for obstructed attic spaces that need flexible tubing to bend and funnel that light through the flex pipe into your home. They are built with the highest quality materials. The patented diffuser allows the natural light to be evenly distributed in the room where it is installed.

MODEL #	PRODUCT DESCRIPTION
EZ14SCAFX	14" Composite Flashing Flex Kit (output up to 150 sf)





## EZ Series Tubular Skylight Accessories

### Diffusers:

- Soft White Flat Diffuser
- Soft White Curved Diffuser
- Prismatic Flat Diffuser
- Prismatic Curved Diffuser



### Extension Tube:

- Accommodates a length longer than 48" from roof to ceiling
- Extension tubes are made of the same reflective materials as the standard ones
- Extension tubes come in 20" and 48" lengths



### Flashing:

- Composite/Asphalt Flashing
- Available for: 10" and 14" models



### Light Kit:

- Expands the features of your Tubular Skylight to include a traditional on/off light
- Ideal if you live in a region where days are short in the winter, or if you use a room frequently at night
- Turns your Tubular Skylight into an electric light and still brings in the natural light during the brighter days



### Solar Powered Dimmer with Remote:

- Allows you to select the light level you want in the room, from closed to open and anywhere in between
- Eliminates glare on televisions and display screens
- Darken the room for a daytime nap.
- An on/off night light feature lets you maintain a low light level in the room.
- Two long-lasting LED night lights are included



## Kennedy Solar Attic Fans

### Affordable Solution for Extending the Life Span of Roofs and HVAC Systems

The Kennedy Solar Attic Fan is a simple and environmentally sensible product that can protect your home and even save you money. Powered completely by free solar energy, this sleek and efficient attic vent is compact, quiet, and powerful! Attic fans significantly improve attic air circulation resulting in a healthy, energy efficient home. Our fans are one of the best in their class with the highest standards for quality and functionality.

#### Benefits of Attic Venting:

- Extends roof life by reducing heat build-up on roof shingles and underlayment
- In hot summer months, reduces AC load to lower energy bills
- In cold winter months, prevents ice damming
- Reduces attic moisture eliminating growth of mold and fungus - also minimizes wood rot and insulation damage

#### Key Features:

- Operates for free during the day using solar energy
- Low-profile unit blends seamlessly into roof line
- Water tight, will not leak, and is maintenance free
- Available in 3 mounting types: roof, curb, or gable
- Available in 4 sizes: 16, 32, 48, and 65 watts
- Fits any roof pitch and adapts to most roofing systems
- Easy installation with no structural changes required

#### Superior Construction:

- Solar Panel – adjustable to achieve optimal solar exposure
- Commercial Grade Aluminum Flashing and Housing – heavy-duty, seamless, and leak proof
- Direct Current Motor – long-lasting and quiet
- Fan Blade – precision balanced, 5-wing, corrosion resistant aluminum
- Stainless Steel Protective Animal Screen

#### Certifications and Warranty:

- Hurricane Tested and Approved
- Qualifies for up to a 26% Federal Tax Credit
- Limited Lifetime Warranty

Model Size	cfm Output	Venting Capacity
16 watt	up to <b>1,184</b> cfms	up to <b>1,300</b> sf
32 watt	up to <b>1,560</b> cfms	up to <b>2,200</b> sf
48 watt	up to <b>1,881</b> cfms	up to <b>2,825</b> sf
65 watt	up to <b>2,105</b> cfms	up to <b>3,350</b> sf



**Removes Heat and Moisture from Attic Spaces**



*"I've had great luck with the fan so far in keeping my garage cooler than an unventilated garage... you have a customer for life because of your product and personal service."*

**– Craig A., Carson, CA**





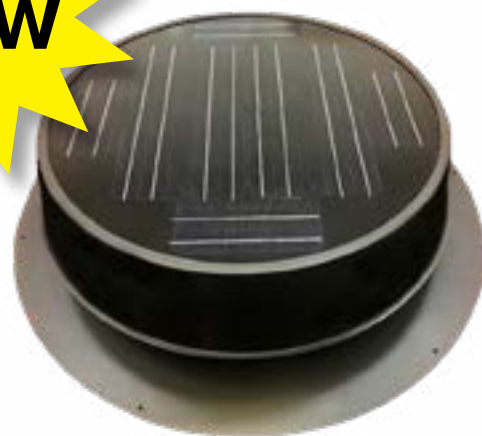


## Ultra Low Profile Solar Attic Fan

| 35 Watt

- Seamless commercial grade aluminum hood is powder-coated inside and out to provide extra durability
- Motor isolation bracket ensures quiet motor operation
- 5-Blade balanced aluminum fan
- Stainless Steel wire screen keeps out critters and debris
- Fixed solar panel effectively stands up to hurricane and tornadic winds
- Seamless commercial-grade aluminum flashing is powder-coated inside and out to provide extra durability

**NEW**



## Roof Mount Solar Attic Fan

| 16 | 32 | 48 | 65 | Watt

- Powder-coated "Architectural Bronze" aluminum flashing (custom colors available)
- Fits all roof slopes including flat roofs
- Installs on all roof types including shingle, wood shake, and tile
- Features adjustable solar panel for optimal performance
- Easy installation - fully functional right out of box
- Florida Building Code Approved





## Curb Mount Solar Attic Fan

| 16 | 32 | 48 | 65 | Watt

- Powder-coated "Architectural Bronze" aluminum flashing (custom colors available)
- Square shape allows for easy installation
- Installs over pre-built curb
- Features adjustable solar panel for optimal performance
- Easy installation - fully functional right out of box
- Florida Building Code Approved



## Gable Mount Solar Attic Fan

| 16 | 32 | 48 | 65 | Watt

- Fan housing is installed into home's existing gable opening
- Solar panel installed remotely on roof
- Fits all roof types and slopes including flat roofs
- Easy installation - fully functional right out of box
- Florida Building Code Approved #13509.1, #13509.2, #13509.3





## Solar Attic Fan Accessories

### Garage Exhaust Kit:

- Converts roof or curb mount fan into a garage venting system
- Kit can be added to the 16, 32, 48, or 65 watt models
- Perfect for homes with an attic space above the garage
- Can also be used on sheds, barns or other work areas
- Optional Radiation Damper available to minimize the spread of fire (required in some locations - check local building codes)

### Kit Includes:

- Adapter Sleeves and all Hardware
- 8 Feet of Flexible Duct Pipe
- Attractive White Ceiling Vent with Mesh
- All Hardware



### Thermal Snap Switch:

- Designed to turn on the fan when attic temperature reaches 80°F and turn off the fan when the attic temperature goes below 70°F
- Small device easily attaches to the fan motor



### Fire Safety Switch:

- Designed to stop the spread of house attic fires by shutting down the fan
- Features a fusible link that will melt at 228°F
- Easily installed alone or in conjunction with thermal switch



### Remote Panel:

- Used where there is limited sunshine available to installed fan
- Panel is installed away from fan assembly in a sunny area capturing the maximum amount of sunlight for optimal fan performance



### Flashing Skirt and Turret Extension for Tile Roofs:

- Flashing skirt is required for tile roof applications to ensure a weather-tight installation
- Easily installs over the fan flashing
- Turret extension is also available for higher profile S-tile roofs





## YOUR WORRY-FREE GUARANTEES



### **Kennedy Skylights offers some of the best industry warranties.**

Glass: 20-Year Non-Prorated Warranty against seal failure

Polycarbonate: 10-Year Limited Warranty against defects in workmanship and materials

Tubular Series: 25-Year Product Warranty

Solar Attic Fans: Limited Lifetime Warranty



Several Kennedy products have met the U-Factor and Solar Heat Gain Coefficient (SHGC) requirements to be ENERGY STAR® Qualified. This designation is a government-backed program that helps consumers save money with energy efficient products and practices.



Kennedy Skylights' products have undergone rigorous testing conducted by National Certified Testing Laboratories (NCTL) of Orlando, Florida. Our products have been certified to meet or exceed the performance criteria defined in ASTM E-188699 and ASTM E-1996. In the uniform load structural test, Kennedy's Marquis Skylights have survived wind gusts in excess of 200 mph. The Marquis Tempered LoE-240 glass (not as strong as our Laminated and High Impact models) has been tested to a Design Pressure of 80 PSF.



All Kennedy Skylights have received approval from the Florida Building Code. The HCMA has been approved for High Velocity Hurricane Zones--Miami-Dade County NOA#16-0329.08. Additionally, the MD-ICMG model is pending Miami-Dade County approval. Visit [www.kennedyskylights.com](http://www.kennedyskylights.com) to see the approval documents.



Kennedy Skylights is a Certified Participant in the National Accreditation and Management Institute Inc. (NAMI), a Quality Assurance Program that complies with ISO/IEC 17020 and Guide 53.



Kennedy Skylights are proudly manufactured in America. We have production facilities in Sanford, Florida and Phoenix, Arizona to quickly ship anywhere in the U.S.A. to internationally.

5294 Tower Way, Sanford, FL 32773  
[www.kennedyskylights.com](http://www.kennedyskylights.com)  
800.280.2545 fax 407.330.5125