

INSTALL VIDEO: To view a step-by-step installation video, please visit <https://kennedyskylights.com/install-videos.html>



WARNING: Please take the time to read through the ENTIRE instructions prior to starting any work. These instructions should be used in conjunction with the standard solar attic fan install instructions.

The Thermal Snap Switch is designed to control the operation of the Kennedy Solar Attic Fan according to the attic temperature. The switch will turn ON the Solar Attic Fan (SAF) when the temperature in the attic reaches approximately 80°F and will turn OFF the fan when the temperature cools to 70°F.

IMPORTANT: If you are also installing the Kennedy Thermal Switch, the Fire Safety Switch needs to be installed first and the Thermal Snap Switch attaches to the Fire Safety Switch. Begin with the Fire Safety Cutoff Switch Installation (Steps 1 to 5b) then proceed to Step 5 on the Thermal Switch Installation.

CAUTION: IF WORKING OUTSIDE, COVER THE SOLAR PANEL WITH A SOFT CLOTH TO PREVENT THE FAN FROM OPERATING WHILE HANDLING THE UNIT.

PARTS

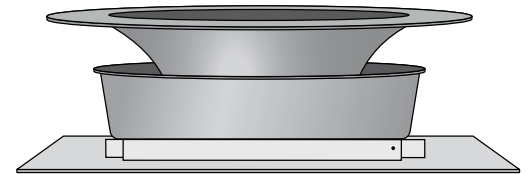
- Thermal Snap Switch
- 1/8" Allen Wrench
- Zip Tie
- Black Wire Clip
- 3/4" Self-Tapping Pan Head Screw

TOOLS NEEDED

- Soft Cloth or Cardboard
- Scissors
- Philips Screwdriver

STEP 1

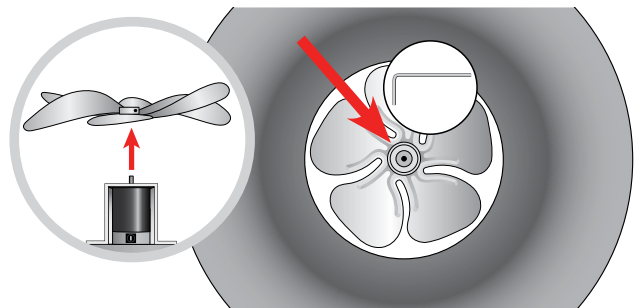
Ensure that the solar panel is locked in the flat position. Carefully turn the unit upside down and place it gently on a soft cloth or piece of cardboard to prevent scratching the solar panel.



STEP 2

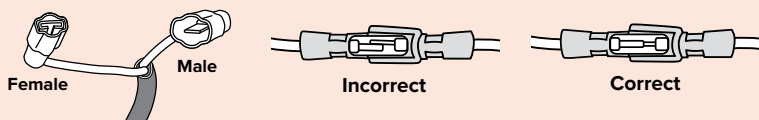
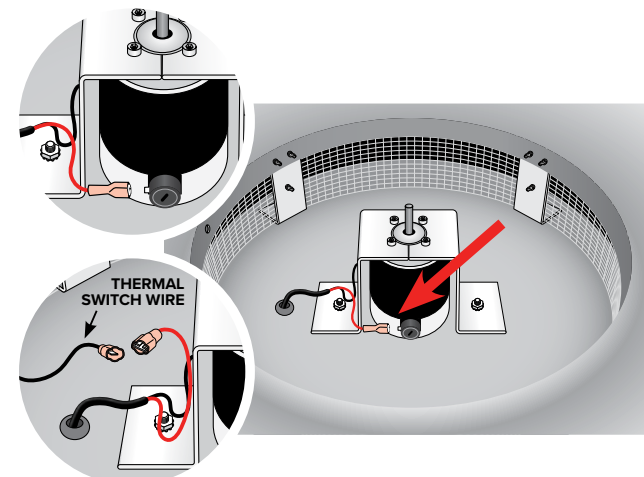
Using the provided 1/8" Allen Wrench, remove the set screw holding the fan blade in place to the motor shaft. Carefully slide the fan blade up and off of the motor shaft. Place the fan blade and set screw off to the side.

NOTE: Take care not to damage the fan blade.



STEP 3

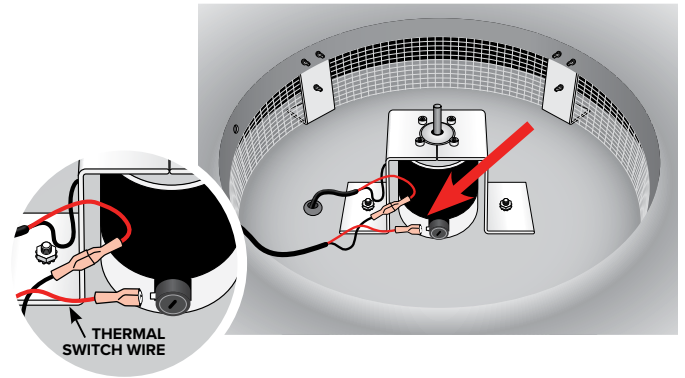
Locate the wire lead coming from the motor and disconnect the red female wire by sliding it off of the male motor connector. Then, plug it into the black male connector on the thermal switch wire.



NOTE - Please make sure the male connector is centered before joining the connectors together as shown.

STEP 4

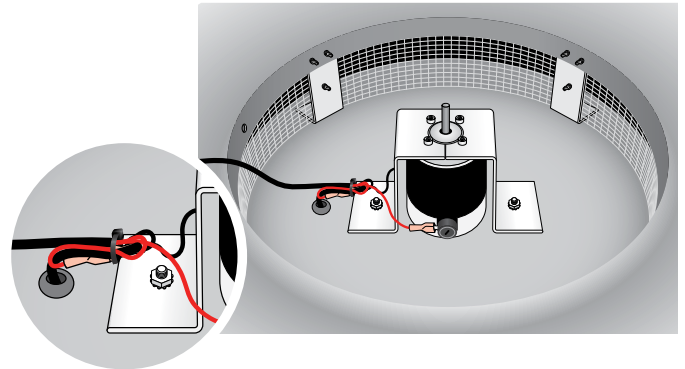
Insert red female connector from the thermal switch into the open male connector on the motor.



STEP 5

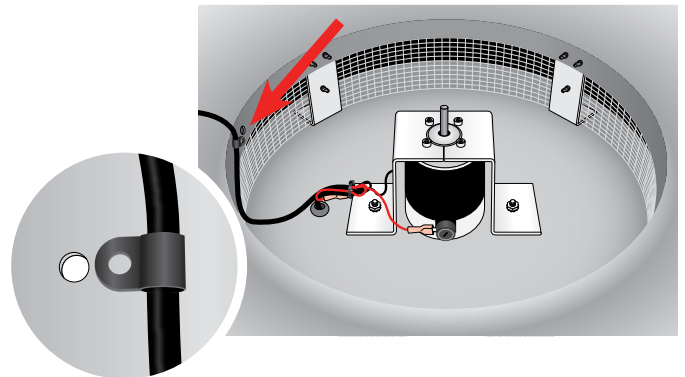
Using the provided zip tie, neatly wrap the loose wires together to ensure that the fan blade will clear the wires. Snip off the excess plastic on the zip tie.

IMPORTANT: All wires must be secured and out of the way of the fan blades to avoid damaging the wires.



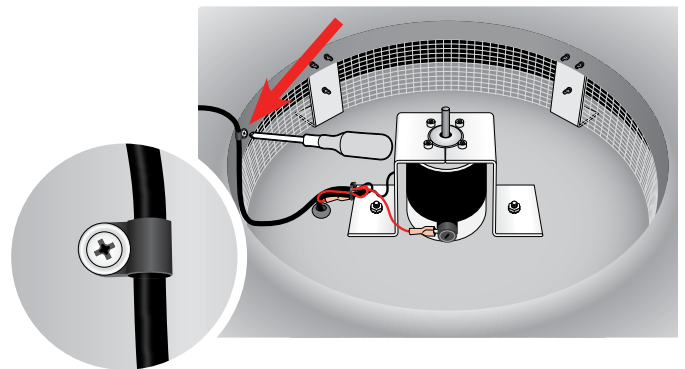
STEP 6

Locate the pre-drilled screw hole on the side of the fan flashing. Run the thermal switch wire along the bottom of the fan housing and up the side near the pre-drilled hole. Attach the provided wire clip to the thermal switch wire.



STEP 7

Using a Phillips head screwdriver, attach the wire clip to the pre-drilled hole on the side of the fan flashing using the provided 3/4" self-tapping pan head screw.



STEP 8

Replace the fan blade by sliding it over the motor shaft. Make sure that the end of the motor shaft is flush with the fan hub. Tighten the set screw using the provided 1/8" Allen Wrench.

Continue with the Kennedy solar attic fan installation instructions. When the fan is installed, the thermal switch wire should hang down from the fan.

