



Kennedy  
**Skylights**

800.280.2545  
[www.kennedyskylights.com](http://www.kennedyskylights.com)

*Beauty, Quality, Affordability*  
**KENNEDY SKYLIGHTS**



Kennedy  
Skylights™

# Self-Flashing Fixed Glass Skylight 2" High Curb

**SFG2**

**GLASS**



## KEY FEATURES:

- Meets the stringent requirements of the Florida Building Code
- High performance glass
- Drywall return sized for both ½" and ⅝" drywall
- .062" extruded aluminum exterior with welded corners
- Integrated 4" flange with pre-drilled screw holes
- ENERGY STAR® Qualified in all 50 states

## GLASS CHOICES:

- Tempered, LoE-240 Argon-Filled Glass (standard - no upcharge)
- Laminated, LoE-240 Argon-Filled Glass
- High Impact, Hurricane Rated, LoE-240 Argon-Filled Glass

## COLOR CHOICES:

- "Patrician Bronze" powder coated exterior
- Pre-finished white wood interior
- Natural wood interior is optional
- Custom colors and sizes available

## WARRANTY:

- 25-Year non-prorated limited warranty on insulated glass against seal failure
- 10-Year limited warranty against defects in workmanship and materials



Roof Pitches

1430

1446

2138

2146

2222

2230

2246

4622

2269

3030

3046

4646

## SKYLIGHT SIZES

SIZE CODE	ROUGH OPENING Width x Length	OUTSIDE FLANGE
1430	14.5" x 30.5"	23" x 39"
1446	14.5" x 46.5"	23" x 55"
2138	21" x 37.875"	29.5" x 46.375"
2146	21" x 45.75"	29.5" x 54.25"
2222	22.5" x 22.5"	31" x 31"
2230	22.5" x 30.5"	31" x 39"
2246	22.5" x 46.5"	31" x 55"
4622	46.5" x 22.5"	55" x 31"
2269	22.5" x 69.5"	31" x 78"
3030	30.5" x 30.5"	39" x 39"
3046	30.5" x 46.5"	39" x 55"
4646	46.5" x 46.5"	55" x 55"

## TEMPERED LoE-240 GLASS

MODEL NUMBER	WEIGHT
1430 - TSFG2	23 lbs
1446 - TSFG2	38 lbs
2138 - TSFG2	37 lbs
2146 - TSFG2	43 lbs
2222 - TSFG2	29 lbs
2230 - TSFG2	35 lbs
2246 - TSFG2	50 lbs
4622 - TSFG2	50 lbs
2269 - TSFG2	74 lbs
3030 - TSFG2	47 lbs
3046 - TSFG2	61 lbs
4646 - TSFG2	108 lbs

## LAMINATED LoE-240 GLASS

MODEL NUMBER	WEIGHT
1430 - LSFG2	27 lbs
1446 - LSFG2	43 lbs
2138 - LSFG2	44.5 lbs
2146 - LSFG2	57 lbs
2222 - LSFG2	31 lbs
2230 - LSFG2	41 lbs
2246 - LSFG2	53 lbs
4622 - LSFG2	53 lbs
2269 - LSFG2	83 lbs
3030 - LSFG2	50 lbs
3046 - LSFG2	70 lbs
4646 - LSFG2	120 lbs

## HIGH IMPACT LoE-240 GLASS

MODEL NUMBER	WEIGHT
1430 - ISFG2	28 lbs
1446 - ISFG2	45 lbs
2138 - ISFG2	45.5 lbs
2146 - ISFG2	58 lbs
2222 - ISFG2	32 lbs
2230 - ISFG2	43 lbs
2246 - ISFG2	54 lbs
4622 - ISFG2	54 lbs
2269 - ISFG2	89 lbs
3030 - ISFG2	52 lbs
3046 - ISFG2	74 lbs
4646 - ISFG2	123 lbs

[www.kennedyskylights.com](http://www.kennedyskylights.com)

To Place Order, Call 800.280.2545 or Fax 407.330.5125



## KEY FEATURES:

- Meets the stringent requirements of the Florida Building Code
- High performance glass
- Drywall return sized for both ½" and ⅝" drywall
- .062" extruded aluminum exterior with welded corners
- Integrated 4" flange with pre-drilled screw holes
- ENERGY STAR® Qualified in all 50 states

## GLASS CHOICES:

- Tempered, LoE-240 Argon-Filled Glass (standard - no upcharge)
- Laminated, LoE-240 Argon-Filled Glass
- High Impact, Hurricane Rated, LoE-240 Argon-Filled Glass

## COLOR CHOICES:

- "Patrician Bronze" powder coated exterior
- Pre-finished white wood interior
- Natural wood interior is optional
- Custom colors and sizes available

## WARRANTY:

- 25-Year non-prorated limited warranty on insulated glass against seal failure
- 10-Year limited warranty against defects in workmanship and materials



1430

1446

2138

2146

2222

2230

2246

4622

2269

3030

3046

4646

## SKYLIGHT SIZES

## TEMPERED LoE-240 GLASS

## LAMINATED LoE-240 GLASS

## HIGH IMPACT LoE-240 GLASS

SIZE CODE	ROUGH OPENING Width x Length	OUTSIDE FLANGE
1430	14.5" x 30.5"	23" x 39"
1446	14.5" x 46.5"	23" x 55"
2138	21" x 37.875"	29.5" x 46.375"
2146	21" x 45.75"	29.5" x 54.25"
2222	22.5" x 22.5"	31" x 31"
2230	22.5" x 30.5"	31" x 39"
2246	22.5" x 46.5"	31" x 55"
4622	46.5" x 22.5"	55" x 31"
2269	22.5" x 69.5"	31" x 78"
3030	30.5" x 30.5"	39" x 39"
3046	30.5" x 46.5"	39" x 55"
4646	46.5" x 46.5"	55" x 55"

MODEL NUMBER	WEIGHT
1430 - TSFG4	26 lbs
1446 - TSFG4	42 lbs
2138 - TSFG4	45 lbs
2146 - TSFG4	51 lbs
2222 - TSFG4	35 lbs
2230 - TSFG4	41 lbs
2246 - TSFG4	56 lbs
4622 - TSFG4	56 lbs
2269 - TSFG4	80 lbs
3030 - TSFG4	51 lbs
3046 - TSFG4	68 lbs
4646 - TSFG4	116 lbs

MODEL NUMBER	WEIGHT
1430 - LSFG4	33 lbs
1446 - LSFG4	48 lbs
2138 - LSFG4	52.5 lbs
2146 - LSFG4	65 lbs
2222 - LSFG4	37 lbs
2230 - LSFG4	48 lbs
2246 - LSFG4	61 lbs
4622 - LSFG4	61 lbs
2269 - LSFG4	91 lbs
3030 - LSFG4	58 lbs
3046 - LSFG4	78 lbs
4646 - LSFG4	130 lbs

MODEL NUMBER	WEIGHT
1430 - ISFG4	34 lbs
1446 - ISFG4	49 lbs
2138 - ISFG4	53.5 lbs
2146 - ISFG4	66 lbs
2222 - ISFG4	38 lbs
2230 - ISFG4	49 lbs
2246 - ISFG4	63 lbs
4622 - ISFG4	63 lbs
2269 - ISFG4	95 lbs
3030 - ISFG4	60 lbs
3046 - ISFG4	81 lbs
4646 - ISFG4	134 lbs



Kennedy  
Skylights™

# Self-Flashing Fixed Glass Skylight 6" High Curb

**SFG6**

**GLASS**



## KEY FEATURES:

- High performance glass
- Drywall return sized for both ½" and ⅝" drywall
- .062" extruded aluminum exterior with welded corners
- Integrated 4" flange with pre-drilled screw holes

## GLASS CHOICES:

- Tempered, LoE-240 Argon-Filled Glass (standard - no upcharge)
- Laminated, LoE-240 Argon-Filled Glass
- High Impact, Hurricane Rated, LoE-240 Argon-Filled Glass

## COLOR CHOICES:

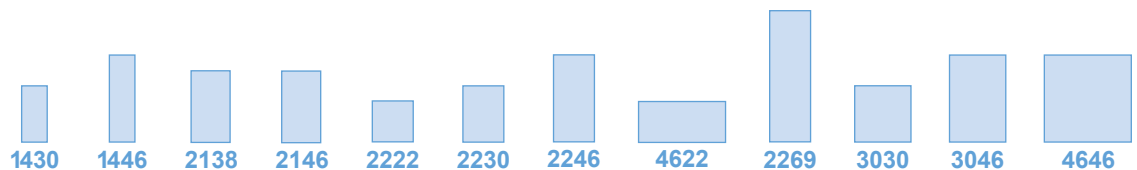
- "Patrician Bronze" powder coated exterior
- Pre-finished white wood interior
- Natural wood interior is optional
- Custom colors and sizes available

## WARRANTY:

- 25-Year non-prorated limited warranty on insulated glass against seal failure
- 10-Year limited warranty against defects in workmanship and materials



Roof Pitches



## SKYLIGHT SIZES

SIZE CODE	ROUGH OPENING Width x Length	OUTSIDE FLANGE
1430	14.5" x 30.5"	23" x 39"
1446	14.5" x 46.5"	23" x 55"
2138	21" x 37.875"	29.5" x 46.375"
2146	21" x 45.75"	29.5" x 54.25"
2222	22.5" x 22.5"	31" x 31"
2230	22.5" x 30.5"	31" x 39"
2246	22.5" x 46.5"	31" x 55"
4622	46.5" x 22.5"	55" x 31"
2269	22.5" x 69.5"	31" x 78"
3030	30.5" x 30.5"	39" x 39"
3046	30.5" x 46.5"	39" x 55"
4646	46.5" x 46.5"	55" x 55"

## TEMPERED LoE-240 GLASS

MODEL NUMBER	WEIGHT
1430 - TSFG6	29 lbs
1446 - TSFG6	47 lbs
2138 - TSFG6	46 lbs
2146 - TSFG6	52 lbs
2222 - TSFG6	38 lbs
2230 - TSFG6	47 lbs
2246 - TSFG6	59 lbs
4622 - TSFG6	59 lbs
2269 - TSFG6	92 lbs
3030 - TSFG6	57 lbs
3046 - TSFG6	78 lbs
4646 - TSFG6	127 lbs

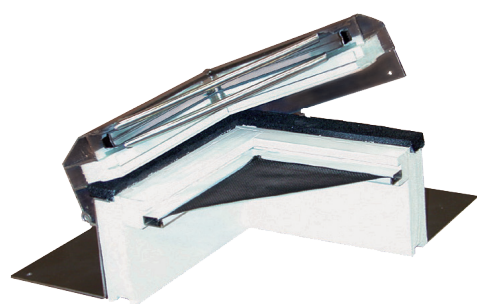
## LAMINATED LoE-240 GLASS

MODEL NUMBER	WEIGHT
1430 - LSFG6	36 lbs
1446 - LSFG6	51 lbs
2138 - LSFG6	53.5 lbs
2146 - LSFG6	66 lbs
2222 - LSFG6	39 lbs
2230 - LSFG6	57 lbs
2246 - LSFG6	74 lbs
4622 - LSFG6	74 lbs
2269 - LSFG6	115 lbs
3030 - LSFG6	71 lbs
3046 - LSFG6	99 lbs
4646 - LSFG6	159 lbs

## HIGH IMPACT LoE-240 GLASS

MODEL NUMBER	WEIGHT
1430 - ISFG6	37 lbs
1446 - ISFG6	52 lbs
2138 - ISFG6	54.5 lbs
2146 - ISFG6	67 lbs
2222 - ISFG6	40 lbs
2230 - ISFG6	59 lbs
2246 - ISFG6	76 lbs
4622 - ISFG6	76 lbs
2269 - ISFG6	121 lbs
3030 - ISFG6	74 lbs
3046 - ISFG6	103 lbs
4646 - ISFG6	166 lbs





Roof Pitches

2138

2146

2222

2230

2246

4622

2269

3030

3046

4646

## KEY FEATURES:

- High performance glass
- Opens up to 8" and includes an insect screen
- Operated by a hand crank or telescoping pole
- Drywall return sized for both ½" and ⅝" drywall
- .062" extruded aluminum exterior with welded corners
- Integrated 4" flange with pre-drilled screw holes
- SFVG6 works on a 0:12 to 68:12 roof pitch

## GLASS CHOICES:

- Tempered, LoE-240 Argon-Filled Glass (standard - no upcharge)
  - Laminated, LoE-240 Argon-Filled Glass
- Note:** Impact Glass not available

## COLOR CHOICES:

- "Patrician Bronze" powder coated exterior
- Pre-finished white wood interior

## CUSTOM OPTIONS:

- Natural wood interior
- Custom exterior colors and sizes available
- Remote controlled motorized drive with rain sensor

## WARRANTY:

- 25-Year non-prorated limited warranty on insulated glass against seal failure
- 10-Year limited warranty against defects in workmanship and materials

## SKYLIGHT SIZES

## TEMPERED LO-E GLASS - 4" OR 6" CURB

## LAMINATED LO-E GLASS - 4" OR 6" CURB

SIZE CODE	ROUGH OPENING Width x Length	OUTSIDE FLANGE
2138	21" x 37.875"	29.5" x 48.375"
2146	21" x 45.75"	29.5" x 54.25"
2222	22.5" x 22.5"	31" x 31"
2230	22.5" x 30.5"	31" x 39"
2246	22.5" x 46.5"	31" x 55"
4622	46.5" x 22.5"	55" x 31"
2269	22.5" x 69.5"	31" x 78"
3030	30.5" x 30.5"	39" x 39"
3046	30.5" x 46.5"	39" x 55"
4646	46.5" x 46.5"	55" x 55"

MODEL NUMBER	4" WEIGHT	MODEL NUMBER	6" WEIGHT
2138-TSFVG4	48.5 lbs	2138-TSFVG6	50.5 lbs
2146-TSFVG4	55 lbs	2146-TSFVG6	58 lbs
2222-TSFVG4	38 lbs	2222-TSFVG6	41 lbs
2230-TSFVG4	45 lbs	2230-TSFVG6	54 lbs
2246-TSFVG4	63 lbs	2246-TSFVG6	66 lbs
4622-TSFVG4	63 lbs	4622-TSFVG6	66 lbs
2269-TSFVG4	85 lbs	2269-TSFVG6	100 lbs
3030-TSFVG4	55 lbs	3030-TSFVG6	62 lbs
3046-TSFVG4	72 lbs	3046-TSFVG6	84 lbs
4646-TSFVG4	120 lbs	4646-TSFVG6	135 lbs

MODEL NUMBER	4" WEIGHT	MODEL NUMBER	6" WEIGHT
2138-LSFVG4	60 lbs	2138-LSFVG6	61 lbs
2146-LSFVG4	70.5 lbs	2146-LSFVG6	71.5 lbs
2222-LSFVG4	40 lbs	2222-LSFVG6	42 lbs
2230-LSFVG4	52 lbs	2230-LSFVG6	61 lbs
2246-LSFVG4	70 lbs	2246-LSFVG6	81 lbs
4622-LSFVG4	70 lbs	4622-LSFVG6	81 lbs
2269-LSFVG4	104 lbs	2269-LSFVG6	123 lbs
3030-LSFVG4	63 lbs	3030-LSFVG6	76 lbs
3046-LSFVG4	85 lbs	3046-LSFVG6	105 lbs
4646-LSFVG4	138 lbs	4646-LSFVG6	167 lbs

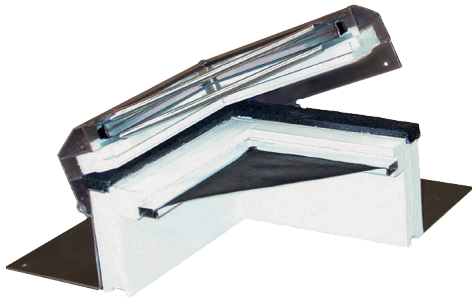


Kennedy  
Skylights™

# Self-Flashing Solar Ventilating Glass Skylight 4" or 6" High Curb

**SFSVG4  
SFSVG6**

**GLASS**



Roof Pitches

2138

2146

2222

2230

2246

4622

2269

3030

3046

4646

## KEY FEATURES:

- High performance glass
- Opens up to 8" and includes an insect screen
- Requires no wiring, which makes for easy and cost effective installation
- Rain sensor will close the skylight automatically if inclement weather approaches
- Hand crank or telescoping pole optional
- Drywall return sized for both 1/2" and 5/8" drywall
- .062" extruded aluminum exterior with welded corners
- Integrated 4" flange with pre-drilled screw holes
- SFSVG6 works on a 0:12 to 68:12 roof pitch
- 30% federal tax credit on both product and installation

## GLASS CHOICES:

- Tempered, LoE-240 Argon-Filled Glass (standard - no upcharge)
  - Laminated, LoE-240 Argon-Filled Glass
- Note:** Impact Glass not available

## COLOR CHOICES:

- "Patrician Bronze" powder coated exterior
- Pre-finished white wood interior

## CUSTOM OPTIONS:

- Natural wood interior
- Custom exterior colors and sizes available

## WARRANTY:

- 25-Year warranty on the glass
- 10-Year warranty on the solar smart operation

## SKYLIGHT SIZES

SIZE CODE	ROUGH OPENING Width x Length	OUTSIDE FLANGE
2138	21" x 37.875"	29.5" x 48.375"
2146	21" x 45.75"	29.5" x 54.25"
2222	22.5" x 22.5"	31" x 31"
2230	22.5" x 30.5"	31" x 39"
2246	22.5" x 46.5"	31" x 55"
4622	46.5" x 22.5"	55" x 31"
2269	22.5" x 69.5"	31" x 78"
3030	30.5" x 30.5"	39" x 39"
3046	30.5" x 46.5"	39" x 55"
4646	46.5" x 46.5"	55" x 55"

## TEMPERED LO-E GLASS - 4" OR 6" CURB

MODEL NUMBER	4" WEIGHT	MODEL NUMBER	6" WEIGHT
2138-TSFSVG4	48.5 lbs	2138-TSFSVG6	50.5 lbs
2146-TSFSVG4	55 lbs	2146-TSFSVG6	58 lbs
2222-TSFSVG4	38 lbs	2222-TSFSVG6	41 lbs
2230-TSFSVG4	45 lbs	2230-TSFSVG6	54 lbs
2246-TSFSVG4	63 lbs	2246-TSFSVG6	66 lbs
4622-TSFSVG4	63 lbs	4622-TSFSVG6	66 lbs
2269-TSFSVG4	85 lbs	2269-TSFSVG6	100 lbs
3030-TSFSVG4	55 lbs	3030-TSFSVG6	62 lbs
3046-TSFSVG4	72 lbs	3046-TSFSVG6	84 lbs
4646-TSFSVG4	120 lbs	4646-TSFSVG6	135 lbs

## LAMINATED LO-E GLASS - 4" OR 6" CURB

MODEL NUMBER	4" WEIGHT	MODEL NUMBER	6" WEIGHT
2138-LSFSVG4	60 lbs	2138-LSFSVG6	61 lbs
2146-LSFSVG4	70.5 lbs	2146-LSFSVG6	71.5 lbs
2222-LSFSVG4	40 lbs	2222-LSFSVG6	42 lbs
2230-LSFSVG4	52 lbs	2230-LSFSVG6	61 lbs
2246-LSFSVG4	70 lbs	2246-LSFSVG6	81 lbs
4622-LSFSVG4	70 lbs	4622-LSFSVG6	81 lbs
2269-LSFSVG4	104 lbs	2269-LSFSVG6	123 lbs
3030-LSFSVG4	63 lbs	3030-LSFSVG6	76 lbs
3046-LSFSVG4	85 lbs	3046-LSFSVG6	105 lbs
4646-LSFSVG4	138 lbs	4646-LSFSVG6	167 lbs



Kennedy  
Skylights™

## Self-Flashing Glass Sash Replacement

**SFG**

**GLASS**



### GLASS CHOICES:

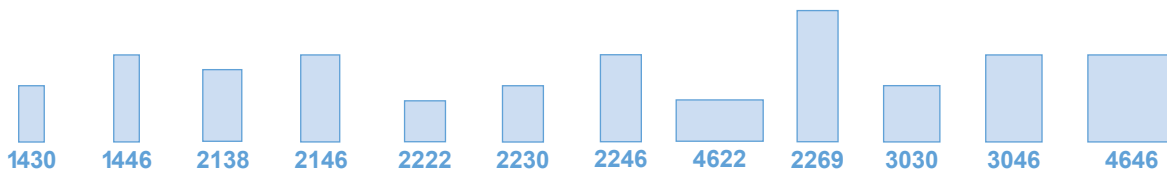
- Tempered, LoE-240 Argon-Filled Glass (standard - no upcharge)
- Laminated, LoE-240 Argon-Filled Glass
- High Impact, Hurricane Rated, LoE-240 Argon-Filled Glass

### COLOR CHOICES:

- "Patrician Bronze" powder coated exterior
- Pre-finished white wood interior
- Natural wood interior is optional
- Custom colors and sizes available

### WARRANTY:

- 25-Year non-prorated limited warranty on insulated glass against seal failure
- 10-Year limited warranty against defects in workmanship and materials



### SKYLIGHT SIZES

SIZE CODE	ROUGH OPENING Width x Length	OUTSIDE FLANGE
1430	14.5" x 30.5"	23" x 39"
1446	14.5" x 46.5"	23" x 55"
2138	21" x 37.875"	29.5" x 46.375"
2146	21" x 45.75"	29.5" x 54.25"
2222	22.5" x 22.5"	31" x 31"
2230	22.5" x 30.5"	31" x 39"
2246	22.5" x 46.5"	31" x 55"
4622	46.5" x 22.5"	55" x 31"
2269	22.5" x 69.5"	31" x 78"
3030	30.5" x 30.5"	39" x 39"
3046	30.5" x 46.5"	39" x 55"
4646	46.5" x 46.5"	55" x 55"

### TEMPERED LoE-240 GLASS

MODEL NUMBER	WEIGHT
1430 - TRG	23 lbs
1446 - TRG	38 lbs
2138 - TRG	28 lbs
2146 - TRG	50 lbs
2222 - TRG	29 lbs
2230 - TRG	35 lbs
2246 - TRG	50 lbs
4622 - TRG	50 lbs
2269 - TRG	74 lbs
3030 - TRG	47 lbs
3046 - TRG	61 lbs
4646 - TRG	108 lbs

### LAMINATED LoE-240 GLASS

MODEL NUMBER	WEIGHT
1430 - LRG	27 lbs
1446 - LRG	43 lbs
2138 - LRG	31 lbs
2146 - LRG	53 lbs
2222 - LRG	31 lbs
2230 - LRG	41 lbs
2246 - LRG	53 lbs
4622 - LRG	53 lbs
2269 - LRG	83 lbs
3030 - LRG	50 lbs
3046 - LRG	70 lbs
4646 - LRG	120 lbs

### HIGH IMPACT LoE-240 GLASS

MODEL NUMBER	WEIGHT
1430 - IRG	28 lbs
1446 - IRG	45 lbs
2138 - IRG	32 lbs
2146 - IRG	54 lbs
2222 - IRG	32 lbs
2230 - IRG	43 lbs
2246 - IRG	54 lbs
4622 - IRG	54 lbs
2269 - IRG	89 lbs
3030 - IRG	52 lbs
3046 - IRG	74 lbs
4646 - IRG	123 lbs



Kennedy  
Skylights™

# Curb Mount Fixed Glass Skylight

**CMG**

**GLASS**



## KEY FEATURES:

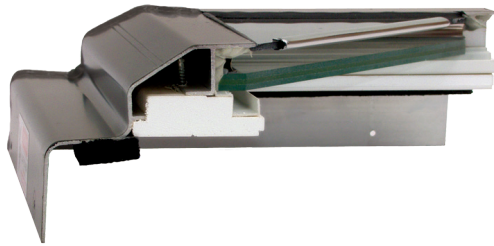
- Meets the stringent requirements of the Florida Building Code
- High performance glass
- .063" extruded aluminum exterior with welded corners
- Oversized to fit most curbs
- ENERGY STAR® Qualified in all 50 states

## GLASS CHOICES:

- Tempered, LoE-240 Argon-Filled Glass
- Laminated, LoE-240 Argon-Filled Glass
- High Impact, Hurricane Rated, LoE-240 Argon Filled Glass

## COLOR CHOICES AND OPTIONS:

- "Patrician Bronze" powder coated exterior
- Custom colors and sizes available
- Optional aluminum curb available - mounts on AC/ACW/ACWU models (*see curb section for details*)

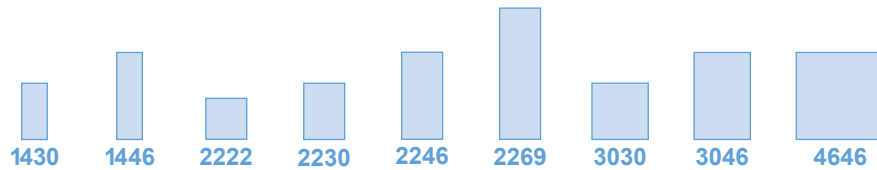


## WARRANTY:

- 25-Year non-prorated limited warranty on insulated glass against seal failure
- 10-Year limited warranty against defects in workmanship and materials



Roof Pitches



## SKYLIGHT SIZES

SIZE CODE	ROUGH OPENING Width x Length	OUTSIDE CURB DIMENSION
1430	14.5" x 30.5"	17.5" x 33.5"
1446	14.5" x 46.5"	17.5" x 49.5"
2222	22.5" x 22.5"	25.5" x 25.5"
2230	22.5" x 30.5"	25.5" x 33.5"
2246	22.5" x 46.5"	25.5" x 49.5"
2269	22.5" x 69.5"	25.5" x 72.5"
3030	30.5" x 30.5"	33.5" x 33.5"
3046	30.5" x 46.5"	33.5" x 49.5"
4646	46.5" x 46.5"	49.5" x 49.5"

## TEMPERED LoE-240 GLASS

MODEL NUMBER	WEIGHT
1430 - TCMG	20 lbs
1446 - TCMG	33 lbs
2222 - TCMG	24 lbs
2230 - TCMG	30 lbs
2246 - TCMG	41 lbs
2269 - TCMG	56 lbs
3030 - TCMG	37 lbs
3046 - TCMG	50 lbs
4646 - TCMG	87 lbs

## LAMINATED LoE-240 GLASS

MODEL NUMBER	WEIGHT
1430 - LCMG	22 lbs
1446 - LCMG	36 lbs
2222 - LCMG	27 lbs
2230 - LCMG	34 lbs
2246 - LCMG	48 lbs
2269 - LCMG	66 lbs
3030 - LCMG	43 lbs
3046 - LCMG	60 lbs
4646 - LCMG	98 lbs

## HIGH IMPACT LoE-240 GLASS

MODEL NUMBER	WEIGHT
1430 - ICMG	23 lbs
1446 - ICMG	37 lbs
2222 - ICMG	31 lbs
2230 - ICMG	39 lbs
2246 - ICMG	55 lbs
2269 - ICMG	77 lbs
3030 - ICMG	49 lbs
3046 - ICMG	70 lbs
4646 - ICMG	103 lbs

†CMG models are manufactured 1" larger than the outside curb dimension to allow for flashing material.  
Example: 2246-CMG actual dimensions = 26.5" x 50.5"

[www.kennedyskylights.com](http://www.kennedyskylights.com)

**To Place Order, Call 800.280.2545 or Fax 407.330.5125**





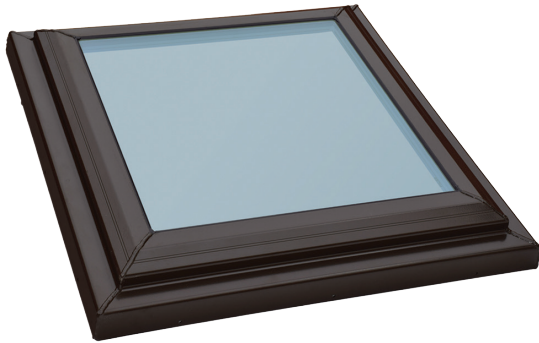
Kennedy  
Skylights™

# High Impact Curb Mount Fixed Glass Skylight

Miami-Dade County Product Control Approved

**MD-ICMG**

**GLASS**



## KEY FEATURES:

- Meets the stringent requirements of the Florida Building Code
- Miami Dade Approved
- High performance glass
- .063" extruded aluminum exterior with welded corners
- Moisture resistant, full-surround foam gasket
- Oversized to fit most curbs
- ENERGY STAR® Qualified in all 50 states

## GLASS CHOICES:

- High Velocity, Hurricane Zone, NOA#16-0329.08
- High Impact, Hurricane Rated, LoE-240 Argon Filled Glass
- Solar Heat Gain Coefficient (SHGC): 0.22
- Design Pressure Rating (DPR): +60 -60 psf

## COLOR CHOICES AND OPTIONS:

- "Patrician Bronze" powder coated exterior
- Pre-finished white wood interior
- Custom colors and sizes available
- Choice of skylight only or with 6" high aluminum curb (ACW6)

## WARRANTY:

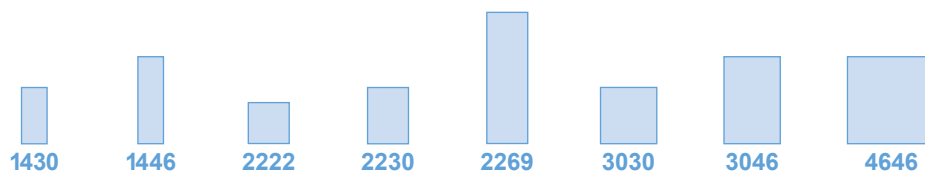
- 25-Year non-prorated limited warranty on insulated glass against seal failure
- 10-Year limited warranty against defects in workmanship and materials



**MIAMI-DADE COUNTY  
APPROVED**



Roof Pitches



## SKYLIGHT SIZES

SIZE CODE	ROUGH OPENING Width x Length	OUTSIDE CURB DIMENSION
1430	14.5" x 30.5"	17.5" x 33.5"
1446	14.5" x 46.5"	17.5" x 49.5"
2222	22.5" x 22.5"	25.5" x 25.5"
2230	22.5" x 30.5"	25.5" x 33.5"
2246	22.5" x 46.5"	25.5" x 49.5"
3030	30.5" x 30.5"	33.5" x 33.5"
3046	30.5" x 46.5"	33.5" x 49.5"
4646	46.5" x 46.5"	49.5" x 49.5"

## MD-ICMG SKYLIGHT ONLY

MODEL NUMBER	WEIGHT
1430-MD-ICMG	23 lbs
1446-MD-ICMG	37 lbs
2222-MD-ICMG	31 lbs
2230-MD-ICMG	39 lbs
2246-MD-ICMG	55 lbs
3030-MD-ICMG	49 lbs
3046-MD-ICMG	70 lbs
4646-MD-ICMG	103 lbs

## MD-ICMG SKYLIGHT / ACW6 6" CURB

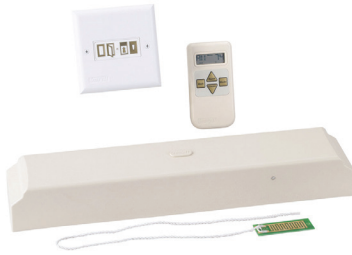
MODEL NUMBER	WEIGHT
1430-MD-ICMG / ACW6	44 lbs
1446-MD-ICMG / ACW6	69 lbs
2222-MD-ICMG / ACW6	58 lbs
2230-MD-ICMG / ACW6	70 lbs
2246-MD-ICMG / ACW6	94 lbs
3030-MD-ICMG / ACW6	81 lbs
3046-MD-ICMG / ACW6	108 lbs
4646-MD-ICMG / ACW6	148 lbs

†MD-ICMG models are manufactured 1" larger than the outside curb dimension to allow for flashing material.  
Example: 2246-MD-ICMG actual dimensions = 26.5" x 50.5"

[www.kennedyskylights.com](http://www.kennedyskylights.com)

**To Place Order, Call 800.280.2545 or Fax 407.330.5125**





## WLS MOTORIZED SYSTEM / ELECTRICAL OPERATION

- Powerful, completely motorized drive system
- Capable of lifting our heaviest and largest skylight
- Includes electrical operator with rain sensor, cover, and hand-held remote
- Features Power Protected Memory - eliminates the need to reset motor after a power-outage
- 1-Year Warranty against defects in materials and workmanship

MODEL	PRODUCT DESCRIPTION
WLS	WLS Motorized System



## CONTROL ROD / MANUAL OPERATION

- Smooth operating control rod allows you to open and close your Vented Skylight with ease
- Telescoping design allows you to reach up to 9 feet so the Venting Skylight can be opened and closed without a ladder
- Collapses down to allow easy storage

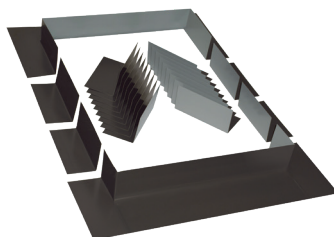
MODEL	PRODUCT DESCRIPTION
Pole1	Telescoping Pole with Hex Ball



## HEX BALL ADAPTOR / MANUAL OPERATION

- For use with our manual control rod when you have multiple vented skylights
- Attaches directly to the manual control on our vented skylights
- Fits into the operator on the skylight frame

MODEL	PRODUCT DESCRIPTION
HBA	Hex Ball Adaptor



## CURB MOUNT STEP FLASHING

- The flashing pieces come together with the shingles to provide water protection for your roof
- Powder coated exterior for consistent finish that protects from corrosion

MODEL	PRODUCT DESCRIPTION
CMSF	Curb Mount Step Flashing



## EZ SEAL FLASHING KIT

- For use with self-flashing skylights
- Works as an optional replacement for a step flashing
- Includes sealant and flashing tape

MODEL	PRODUCT DESCRIPTION
EZSFK	EZ Seal Flashing Kit





Kennedy  
Skylights™

# Self-Flashing Polycarbonate Domed Skylight

**SF**

**POLYCARBONATE**



## KEY FEATURES:

- Meets the stringent requirements of the Florida Building Code
- Co-extruded polycarbonate dome
- Golden bronze tinted outer dome and clear inner panel
- 4" pre-drilled integrated nailing flange
- No curb required
- Mounts between shingles and roof decking

## POLYCARBONATE ADVANTAGES:

- 30-times more impact resistant than acrylic skylights
- 250-times more impact resistant than glass
- Resists temperature extremes from -60°F to +250°F
- Superior weathering performance
- Resists effects of solar UV radiation

## AVAILABLE OPTIONS:

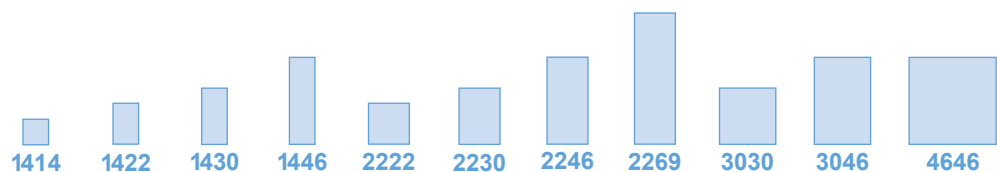
- Single dome

## WARRANTY:

- 10-Year limited warranty against defects in workmanship and materials



Roof Pitches



## SKYLIGHT SIZES

SIZE CODE	ROUGH OPENING <small>Width x Length</small>	OUTSIDE FLANGE
1414	14.5" x 14.5"	22" x 22"
1422	14.5" x 22.5"	22" x 30"
1430	14.5" x 30.5"	22" x 38"
1446	14.5" x 46.5"	22" x 54"
2222	22.5" x 22.5"	30" x 30"
2230	22.5" x 30.5"	30" x 38"
2246	22.5" x 46.5"	30" x 54"
2269	22.5" x 69.5"	30" x 77"
3030	30.5" x 30.5"	38" x 38"
3046	30.5" x 46.5"	38" x 54"
4646	46.5" x 46.5"	54" x 54"

## SF - SELF FLASHING POLYCARBONATE

MODEL NUMBER	WEIGHT
1414 - SF	4 lbs
1422 - SF	5 lbs
1430 - SF	6 lbs
1446 - SF	8 lbs
2222 - SF	7 lbs
2230 - SF	11 lbs
2246 - SF	13 lbs
2269 - SF	25 lbs
3030 - SF	12 lbs
3046 - SF	17 lbs
4646 - SF	26 lbs

**INSTALLATION NOTE:** Not all sealants are compatible with polycarbonate material. Do NOT use **GEOCEL 2300**. See installation sheet.

[www.kennedyskylights.com](http://www.kennedyskylights.com)

**To Place Order, Call 800.280.2545 or Fax 407.330.5125**

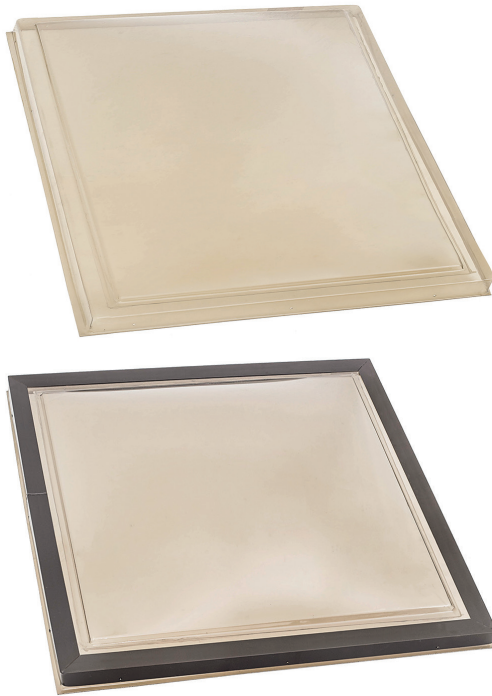


Kennedy  
Skylights™

# Curb Mount Polycarbonate Skylight with Deco-Aluminum Ring

**CM  
CMA**

**POLYCARBONATE**



## KEY FEATURES:

- Meets the stringent requirements of the Florida Building Code
- Co-extruded polycarbonate dome
- Golden bronze tinted outer dome and clear inner panel
- Mounts on existing curb, site-built curb, or Kennedy AC or ACW Curbs (see curb section)
- Pre-drilled screw holes for fast and easy installation
- Available with aluminum deco ring (CMA) or without (CM)

## POLYCARBONATE ADVANTAGES:

- 30-times more impact resistant than acrylic skylights
- 250-times more impact resistant than glass
- Resists temperature extremes from -60°F to +250°F
- Superior weathering performance
- Resists effects of solar UV radiation

## AVAILABLE OPTIONS:

- Single dome

## WARRANTY:

- 10-Year limited warranty against defects in workmanship and materials



Roof Pitches

1414

1422

1430

1446

2222

2230

2246

2269

3030

3046

4646

## SKYLIGHT SIZES

## CM - CURB MOUNT

## CMA - CM w/ALUMINUM RING

SIZE CODE	ROUGH OPENING Width x Length	OUTSIDE CURB DIMENSION
1414	14.5" x 14.5"	17.5" x 17.5"
1422	14.5" x 22.5"	17.5" x 25.5"
1430	14.5" x 30.5"	17.5" x 33.5"
1446	14.5" x 46.5"	17.5" x 49.5"
2222	22.5" x 22.5"	25.5" x 25.5"
2230	22.5" x 30.5"	25.5" x 33.5"
2246	22.5" x 46.5"	25.5" x 49.5"
2269	22.5" x 69.5"	25.5" x 72.5"
3030	30.5" x 30.5"	33.5" x 33.5"
3046	30.5" x 46.5"	33.5" x 49.5"
4646	46.5" x 46.5"	49.5" x 49.5"

MODEL NUMBER	WEIGHT
1414 - CM	4 lbs
1422 - CM	5 lbs
1430 - CM	6 lbs
1446 - CM	8 lbs
2222 - CM	7 lbs
2230 - CM	11 lbs
2246 - CM	13 lbs
2269 - CM	25 lbs
3030 - CM	9 lbs
3046 - CM	17 lbs
4646 - CM	26 lbs

MODEL NUMBER	WEIGHT
1414 - CMA	5 lbs
1422 - CMA	6 lbs
1430 - CMA	8 lbs
1446 - CMA	10 lbs
2222 - CMA	9 lbs
2230 - CMA	13 lbs
2246 - CMA	15 lbs
2269 - CMA	28 lbs
3030 - CMA	14 lbs
3046 - CMA	20 lbs
4646 - CMA	30 lbs

†CM and CMA models are manufactured 1" larger than the outside curb dimension to allow for flashing material.

Example: 2246-CM actual dimensions = 26.5" x 50.5"

[www.kennedyskylights.com](http://www.kennedyskylights.com)

**To Place Order, Call 800.280.2545 or Fax 407.330.5125**



Kennedy  
Skylights™

# Hurricane-Approved Curb Mount Polycarbonate Skylight with Aluminum Ring

**HCMA**

**POLYCARBONATE**



## KEY FEATURES:

- Meets the stringent requirements of the Florida Building Code
- Approved for use in high velocity hurricane zones
- Co-extruded polycarbonate dome
- Perimeter framed by hurricane rated, welded aluminum ring
- "Patrician Bronze" powder coated exterior
- Golden bronze tinted outer dome and clear inner panel
- Mounts on existing curb, site-built curb, or Kennedy ACW
- Pre-drilled screw holes for fast and easy installation

## POLYCARBONATE ADVANTAGES:

- 30-times more impact resistant than acrylic skylights
- 250-times more impact resistant than glass
- Resists temperature extremes from -60°F to +250°F
- Superior weathering performance
- Resists effects of solar UV radiation

## AVAILABLE OPTIONS:

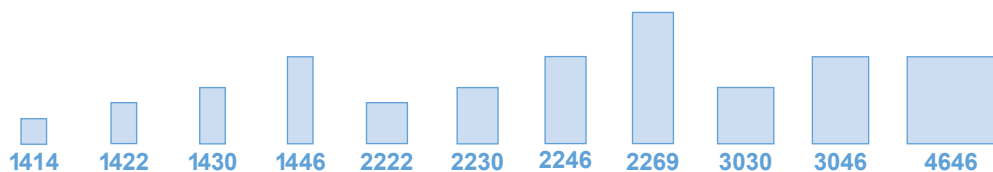
- Single dome
- Custom paint colors available

## WARRANTY:

- 10-Year limited warranty against defects in workmanship and materials



Roof Pitches



## SKYLIGHT SIZES

SIZE CODE	ROUGH OPENING Width x Length	OUTSIDE CURB DIMENSION
1414	14.5" x 14.5"	17.5" x 17.5"
1422	14.5" x 22.5"	17.5" x 25.5"
1430	14.5" x 30.5"	17.5" x 33.5"
1446	14.5" x 46.5"	17.5" x 49.5"
2222	22.5" x 22.5"	25.5" x 25.5"
2230	22.5" x 30.5"	25.5" x 33.5"
2246	22.5" x 46.5"	25.5" x 49.5"
2269	22.5" x 69.5"	25.5" x 72.5"
3030	30.5" x 30.5"	33.5" x 33.5"
3046	30.5" x 46.5"	33.5" x 49.5"
4646	46.5" x 46.5"	49.5" x 49.5"

## HCMA - CM w/HURRICANE RING

MODEL NUMBER	WEIGHT
1414 - HCMA	6 lbs
1422 - HCMA	7 lbs
1430 - HCMA	9 lbs
1446 - HCMA	11 lbs
2222 - HCMA	9 lbs
2230 - HCMA	14 lbs
2246 - HCMA	16 lbs
2269 - HCMA	30 lbs
3030 - HCMA	15 lbs
3046 - HCMA	21 lbs
4646 - HCMA	31 lbs

## MD-HCMA - CM w/HURRICANE RING & 6" CURB

MODEL NUMBER	WEIGHT
1414 - HCMA / ACW6	6 lbs
1422 - HCMA / ACW6	7 lbs
1430 - HCMA / ACW6	9 lbs
1446 - HCMA / ACW6	11 lbs
2222 - HCMA / ACW6	9 lbs
2230 - HCMA / ACW6	14 lbs
2246 - HCMA / ACW6	16 lbs
3030 - HCMA / ACW6	15 lbs
3046 - HCMA / ACW6	21 lbs
4646 - HCMA / ACW6	31 lbs

†HCMA models are manufactured 1" larger than the outside curb dimension to allow for flashing material.

Example: 2246-HCMA actual dimensions = 26.5" x 50.5"

[www.kennedyskylights.com](http://www.kennedyskylights.com)

**To Place Order, Call 800.280.2545 or Fax 407.330.5125**





Kennedy  
Skylights™

## Self-Flashing Polycarbonate Skylight

with White Wood Interior for Reroofing Applications

## Self-Flashing Polycarbonate Skylight

with Styrofoam Liner for New Construction Applications

**SFAW**  
**SFA**

**POLYCARBONATE**



### KEY FEATURES:

- Meets the stringent requirements of the Florida Building Code
- Co-extruded polycarbonate dome
- Choice of energy-efficient Styrofoam liner (SFA) or Pre-Finished Wood interior (SFAW)
- Golden bronze tinted outer dome and clear inner panel
- "Patrician Bronze" powder coated exterior
- .062" extruded aluminum exterior with welded corners
- Moisture resistant, full-surround foam gasket
- 4" pre-drilled integrated nailing flange

### POLYCARBONATE ADVANTAGES:

- 30-times more impact resistant than acrylic skylights
- 250-times more impact resistant than glass
- Resists temperature extremes from -60°F to +250°F
- Superior weathering performance
- Resists effects of solar UV radiation

### AVAILABLE OPTIONS:

- Single dome
- Custom paint colors or natural wood finish available

### WARRANTY:

- 10-Year limited warranty against defects in workmanship and materials



Roof Pitches

1414

1422

1430

1446

2222

2230

2246

2269

3030

3046

4646

### SKYLIGHT SIZES

### SFAW - WHITE WOOD INTERIOR

### SFA - STYROFOAM LINER

SIZE CODE	ROUGH OPENING Width x Length	OUTSIDE FLANGE
1414	14.5" x 14.5"	25.5" x 25.5"
1422	14.5" x 22.5"	25.5" x 33.5"
1430	14.5" x 30.5"	25.5" x 41.5"
1446	14.5" x 46.5"	25.5" x 57.5"
2222	22.5" x 22.5"	33.5" x 33.5"
2230	22.5" x 30.5"	33.5" x 41.5"
2246	22.5" x 46.5"	33.5" x 57.5"
2269	22.5" x 69.5"	33.5" x 80.5"
3030	30.5" x 30.5"	41.5" x 41.5"
3046	30.5" x 46.5"	41.5" x 57.5"
4646	46.5" x 46.5"	57.5" x 57.5"

MODEL NUMBER	4" WEIGHT	MODEL NUMBER	6" WEIGHT
1414 - SFAW4	15 lbs	1414 - SFAW6	17 lbs
1422 - SFAW4	18 lbs	1422 - SFAW6	21 lbs
1430 - SFAW4	22 lbs	1430 - SFAW6	26 lbs
1446 - SFAW4	29 lbs	1446 - SFAW6	34 lbs
2222 - SFAW4	22 lbs	2222 - SFAW6	26 lbs
2230 - SFAW4	29 lbs	2230 - SFAW6	33 lbs
2246 - SFAW4	32 lbs	2246 - SFAW6	38 lbs
2269 - SFAW4	38 lbs	2269 - SFAW6	46 lbs
3030 - SFAW4	34 lbs	3030 - SFAW6	40 lbs
3046 - SFAW4	40 lbs	3046 - SFAW6	47 lbs
4646 - SFAW4	54 lbs	4646 - SFAW6	62 lbs

MODEL NUMBER	4" WEIGHT	MODEL NUMBER	6" WEIGHT
1414 - SFA4	10 lbs	1414 - SFA6	12 lbs
1422 - SFA4	13 lbs	1422 - SFA6	15 lbs
1430 - SFA4	18 lbs	1430 - SFA6	20 lbs
1446 - SFA4	22 lbs	1446 - SFA6	25 lbs
2222 - SFA4	12 lbs	2222 - SFA6	16 lbs
2230 - SFA4	16 lbs	2230 - SFA6	21 lbs
2246 - SFA4	20 lbs	2246 - SFA6	23 lbs
2269 - SFA4	26 lbs	2269 - SFA6	31 lbs
3030 - SFA4	28 lbs	3030 - SFA6	30 lbs
3046 - SFA4	30 lbs	3046 - SFA6	34 lbs
4646 - SFA4	50 lbs	4646 - SFA6	56 lbs

[www.kennedyskylights.com](http://www.kennedyskylights.com)

To Place Order, Call 800.280.2545 or Fax 407.330.5125

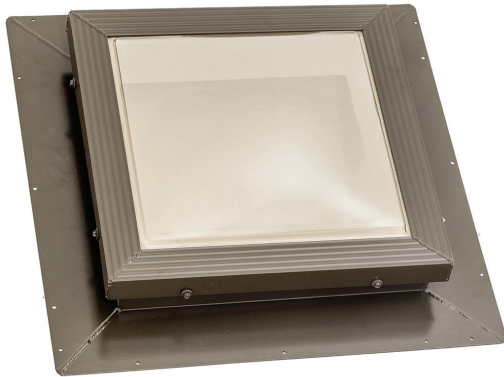


Kennedy  
Skylights™

# Hurricane-Approved Self-Flashing Polycarbonate Skylight with White Wood Interior - 4" or 6" High Curb

**HSFAW**

**POLYCARBONATE**



## KEY FEATURES:

- Meets the stringent requirements of the Florida Building Code
- Approved for use in all wind zones
- Co-extruded polycarbonate dome
- Golden bronze tinted outer dome and clear inner panel
- "Patrician Bronze" powder coated exterior
- .062" extruded aluminum exterior with welded corners
- Pre-drilled screw holes for fast and easy installation
- Perimeter framed by hurricane rated, welded aluminum ring

## POLYCARBONATE ADVANTAGES:

- 30-times more impact resistant than acrylic skylights
- 250-times more impact resistant than glass
- Resists temperature extremes from -60°F to +250°F
- Superior weathering performance
- Resists effects of solar UV radiation

## AVAILABLE OPTIONS:

- Single dome
- Custom paint colors or natural wood finish

## WARRANTY:

- 10-Year limited warranty against defects in workmanship and materials



Roof Pitches

1414

1422

1430

1446

2222

2230

2246

2269

3030

3046

4646

## SKYLIGHT SIZES

SIZE CODE	ROUGH OPENING Width x Length	OUTSIDE FLANGE
1414	14.5" x 14.5"	25.5" x 25.5"
1422	14.5" x 22.5"	25.5" x 35.5"
1430	14.5" x 30.5"	25.5" x 41.5"
1446	14.5" x 46.5"	25.5" x 57.5"
2222	22.5" x 22.5"	33.5" x 33.5"
2230	22.5" x 30.5"	33.5" x 41.5"
2246	22.5" x 46.5"	33.5" x 57.5"
2269	22.5" x 69.5"	33.5" x 80.5"
3030	30.5" x 30.5"	41.5" x 41.5"
3046	30.5" x 46.5"	41.5" x 57.5"
4646	46.5" x 46.5"	57.5" x 57.5"

## HSFAW - 4" HIGH CURB

MODEL NUMBER	WEIGHT
1414 - HSFAW4	15 lbs
1422 - HSFAW4	20 lbs
1430 - HSFAW4	24 lbs
1446 - HSFAW4	32 lbs
2222 - HSFAW4	25 lbs
2230 - HSFAW4	32 lbs
2246 - HSFAW4	36 lbs
2269 - HSFAW4	43 lbs
3030 - HSFAW4	37 lbs
3046 - HSFAW4	44 lbs
4646 - HSFAW4	59 lbs

## HSFAW - 6" HIGH CURB

MODEL NUMBER	WEIGHT
1414 - HSFAW6	17 lbs
1422 - HSFAW6	21 lbs
1430 - HSFAW6	26 lbs
1446 - HSFAW6	35 lbs
2222 - HSFAW6	26 lbs
2230 - HSFAW6	33 lbs
2246 - HSFAW6	39 lbs
2269 - HSFAW6	47 lbs
3030 - HSFAW6	41 lbs
3046 - HSFAW6	48 lbs
4646 - HSFAW6	36 lbs





Kennedy  
Skylights™

# Non-Insulated Pre-Finished Aluminum Curb 4" or 6" High Curb

**AC**

**CURBS**



## KEY FEATURES:

- Pre-finished curb for all roof pitches
- Choice of 4" or 6" high curb
- "Patrician Bronze" powder coated exterior
- .062" extruded aluminum exterior with welded corners
- Pre-drilled screw holes for fast and easy installation
- Individually boxed

## PRE-BUILT CURB ADVANTAGES:

- Saves time and simplifies any skylight installation
- Superior to galvanized metal or site-built curbs
- Works with many brands of plastic and glass skylights designed for curbs
- Non-insulated curb ideal for replacing flashing on existing skylights

## AVAILABLE OPTIONS:

- Custom paint colors and sizes available

## FITS THESE KENNEDY MODELS.

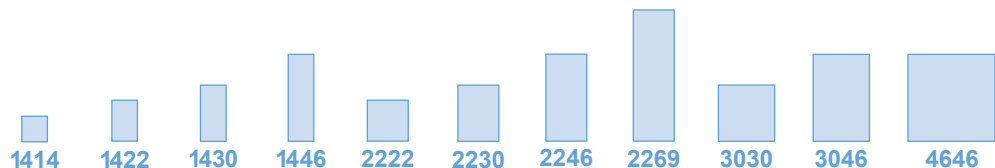
- CMG, CM, CMA, HCMA skylights

## WARRANTY:

- 10-Year limited warranty against defects in workmanship and materials



Roof Pitches



## SKYLIGHT SIZES

SIZE CODE	ROUGH OPENING Width x Length	OUTSIDE FLANGE	OUTSIDE CURB
1414	14.5" x 14.5"	25.5" x 25.5"	17.5" x 17.5"
1422	14.5" x 22.5"	25.5" x 33.5"	17.5" x 25.5"
1430	14.5" x 30.5"	25.5" x 41.5"	17.5" x 33.5"
1446	14.5" x 46.5"	25.5" x 57.5"	17.5" x 49.5"
2222	22.5" x 22.5"	33.5" x 33.5"	25.5" x 25.5"
2230	22.5" x 30.5"	33.5" x 41.5"	25.5" x 33.5"
2246	22.5" x 46.5"	33.5" x 57.5"	25.5" x 49.5"
2269	22.5" x 69.5"	33.5" x 80.5"	25.5" x 72.5"
3030	30.5" x 30.5"	41.5" x 41.5"	33.5" x 33.5"
3046	30.5" x 46.5"	41.5" x 57.5"	33.5" x 49.5"
4646	46.5" x 46.5"	57.5" x 57.5"	49.5" x 49.5"

## AC - 4" HIGH CURB

MODEL NUMBER	4" WEIGHT
1414 - AC4	7 lbs
1422 - AC4	8 lbs
1430 - AC4	11 lbs
1446 - AC4	13 lbs
2222 - AC4	9 lbs
2230 - AC4	12 lbs
2246 - AC4	14 lbs
2269 - AC4	20 lbs
3030 - AC4	16 lbs
3046 - AC4	12 lbs
4646 - AC4	23 lbs

## AC - 6" HIGH CURB

MODEL NUMBER	4" WEIGHT
1414 - AC6	10 lbs
1422 - AC6	12 lbs
1430 - AC6	14 lbs
1446 - AC6	18 lbs
2222 - AC6	15 lbs
2230 - AC6	18 lbs
2246 - AC6	23 lbs
2269 - AC6	30 lbs
3030 - AC6	22 lbs
3046 - AC6	26 lbs
4646 - AC6	34 lbs

[www.kennedyskylights.com](http://www.kennedyskylights.com)

To Place Order, Call 800.280.2545 or Fax 407.330.5125



Kennedy  
Skylights™

# Aluminum Curb with White Wood Interior 4" or 6" High Curb

**ACW**

**CURBS**



## KEY FEATURES:

- Pre-finished curb for all roof pitches
- Choice of 4" or 6" high curb
- "Patrician Bronze" powder coated exterior
- Pre-finished white wood interior
- .062" extruded aluminum exterior with welded corners
- Pre-drilled screw holes for fast and easy installation
- Individually boxed

## PRE-BUILT CURB ADVANTAGES:

- Saves time and simplifies any skylight installation
- Superior to galvanized metal or site-built curbs
- Works with many brands of plastic and glass skylights designed for curbs

## AVAILABLE OPTIONS:

- Custom paint colors and sizes available
- Natural wood finish

## FITS THESE KENNEDY MODELS:

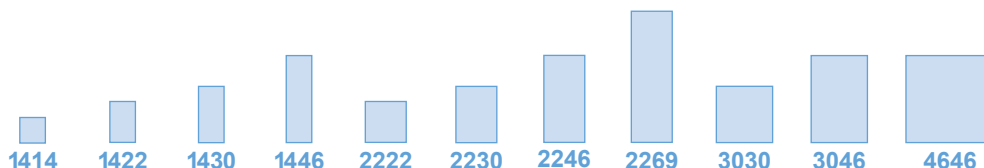
- CMG, CM, CMA, HCMA skylights

## WARRANTY:

- 10-year limited warranty against defects in workmanship and materials



Roof Pitches



## SKYLIGHT SIZES

SIZE CODE	ROUGH OPENING Width x Length	OUTSIDE FLANGE	OUTSIDE CURB
1414	14.5" x 14.5"	25.5" x 25.5"	17.5" x 17.5"
1422	14.5" x 22.5"	25.5" x 33.5"	17.5" x 25.5"
1430	14.5" x 30.5"	25.5" x 41.5"	17.5" x 33.5"
1446	14.5" x 46.5"	25.5" x 57.5"	17.5" x 49.5"
2222	22.5" x 22.5"	33.5" x 33.5"	25.5" x 25.5"
2230	22.5" x 30.5"	33.5" x 41.5"	25.5" x 33.5"
2246	22.5" x 46.5"	33.5" x 57.5"	25.5" x 49.5"
2269	22.5" x 69.5"	33.5" x 80.5"	25.5" x 72.5"
3030	30.5" x 30.5"	41.5" x 41.5"	33.5" x 33.5"
3046	30.5" x 46.5"	41.5" x 57.5"	33.5" x 49.5"
4646	46.5" x 46.5"	57.5" x 57.5"	49.5" x 49.5"

## ACW - 4" HIGH CURB

MODEL NUMBER	4" WEIGHT
1414 - ACW4	13 lbs
1422 - ACW4	16 lbs
1430 - ACW4	19 lbs
1446 - ACW4	27 lbs
2222 - ACW4	24 lbs
2230 - ACW4	27 lbs
2246 - ACW4	34 lbs
2269 - ACW4	40 lbs
3030 - ACW4	27 lbs
3046 - ACW4	31 lbs
4646 - ACW4	39 lbs

## ACW - 6" HIGH CURB

MODEL NUMBER	4" WEIGHT
1414 - ACW6	15 lbs
1422 - ACW6	18 lbs
1430 - ACW6	21 lbs
1446 - ACW6	32 lbs
2222 - ACW6	27 lbs
2230 - ACW6	31 lbs
2246 - ACW6	39 lbs
2269 - ACW6	46 lbs
3030 - ACW6	32 lbs
3046 - ACW6	38 lbs
4646 - ACW6	45 lbs





Kennedy  
Skylights™

# Mill Finish Aluminum Curb with Unpainted Spruce Wood Interior 4" or 6" High Curb

**ACWU**

**CURBS**



## KEY FEATURES:

- Economical curb for all roof pitches
- Choice of 4" or 6" high curb
- Natural spruce wood interior
- .062" extruded aluminum exterior with welded corners
- Pre-drilled screw holes for fast and easy installation
- Fits standard truss and rafter spacing
- Unboxed and palletized for shipping

## PRE-BUILT CURB ADVANTAGES:

- Saves time and simplifies any skylight installation
- Superior to galvanized metal or site-built curbs
- Works with many brands of plastic and glass skylights designed for curbs

## AVAILABLE OPTIONS:

- Custom paint colors and sizes available

## FITS THESE KENNEDY MODELS:

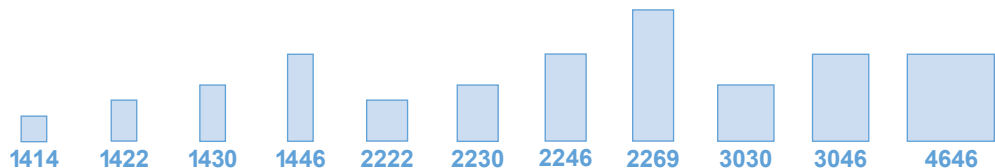
- CMG, CM, CMA, HCMA skylights

## WARRANTY:

- 10-Year limited warranty against defects in workmanship and materials



Roof Pitches



## SKYLIGHT SIZES

SIZE CODE	ROUGH OPENING Width x Length	OUTSIDE FLANGE	OUTSIDE CURB
1414	14.5" x 14.5"	25.5" x 25.5"	17.5" x 17.5"
1422	14.5" x 22.5"	25.5" x 33.5"	17.5" x 25.5"
1430	14.5" x 30.5"	25.5" x 41.5"	17.5" x 33.5"
1446	14.5" x 46.5"	25.5" x 57.5"	17.5" x 49.5"
2222	22.5" x 22.5"	33.5" x 33.5"	25.5" x 25.5"
2230	22.5" x 30.5"	33.5" x 41.5"	25.5" x 33.5"
2246	22.5" x 46.5"	33.5" x 57.5"	25.5" x 49.5"
2269	22.5" x 69.5"	33.5" x 80.5"	25.5" x 72.5"
3030	30.5" x 30.5"	41.5" x 41.5"	33.5" x 33.5"
3046	30.5" x 46.5"	41.5" x 57.5"	33.5" x 49.5"
4646	46.5" x 46.5"	57.5" x 57.5"	49.5" x 49.5"

## ACWU - 4" HIGH CURB

MODEL NUMBER	4" WEIGHT
1414 - ACWU4	13 lbs
1422 - ACWU4	16 lbs
1430 - ACWU4	19 lbs
1446 - ACWU4	27 lbs
2222 - ACWU4	24 lbs
2230 - ACWU4	27 lbs
2246 - ACWU4	34 lbs
2269 - ACWU4	40 lbs
3030 - ACWU4	27 lbs
3046 - ACWU4	31 lbs
4646 - ACWU4	39 lbs

## ACWU - 6" HIGH CURB

MODEL NUMBER	4" WEIGHT
1414 - ACWU6	15 lbs
1422 - ACWU6	18 lbs
1430 - ACWU6	21 lbs
1446 - ACWU6	32 lbs
2222 - ACWU6	27 lbs
2230 - ACWU6	31 lbs
2246 - ACWU6	39 lbs
2269 - ACWU6	46 lbs
3030 - ACWU6	32 lbs
3046 - ACWU6	38 lbs
4646 - ACWU6	45 lbs





Kennedy  
Skylights™

# Pitched Roof, Flat Roof and Curb Mount Tubular Skylights

**TUBULAR  
SKYLIGHT**

**K SERIES**



## PITCHED ROOF TUBULAR SKYLIGHT KIT

- Available in 3 sizes: 10", 13", and 18"
- Kit includes all components and hardware for a 4' installation
- Powder-coated Black and "Patrician Bronze" aluminum flashing
- Choice of prismatic or soft white diffuser - curved or flat
- Fits all roof slopes and roof types
- Florida Building Code Approved and Hurricane Tested
- 25-year product warranty and made in the USA



BLACK	MODEL #		PRODUCT DESCRIPTION
	BRONZE	GRAY	
10KPPBL	10KPPBR	10KPP	10" Pitched Roof Kit (output up to 150 sf)
13KPPBL	13KPPBR	13KPP	13" Pitched Roof Kit (output up to 300 sf)
18KPPBL	18KPPBR	18KPP	18" Pitched Roof Kit (output up to 500 sf)



## FLAT ROOF TUBULAR SKYLIGHT KIT

- Available in 4 sizes: 10", 13", 18", and 21"
- Kit includes all components and hardware for a 4' installation
- Powder-coated Black and "Patrician Bronze" aluminum flashing
- Choice of prismatic or soft white diffuser - curved or flat
- Fits flat roofs and all roof types
- Florida Building Code Approved and Hurricane Tested
- 25-year product warranty and made in the USA



BLACK	MODEL #		PRODUCT DESCRIPTION
	BRONZE	GRAY	
10KFPBL	10KFPBR	10KFP	10" Flat Roof Kit (output up to 150 sf)
13KFPBL	13KFPBR	13KFP	13" Flat Roof Kit (output up to 300 sf)
18KFPBL	18KFPBR	18KFP	18" Flat Roof Kit (output up to 500 sf)
N/A	N/A	21KFP	21" Flat Roof Kit (output up to 700 sf)



## CURB MOUNT TUBULAR SKYLIGHT KIT

- Available in 4 sizes: 10", 13", 18", and 21"
- Kit includes all components and hardware for a 4' installation
- Choice of prismatic or soft white diffuser - curved or flat
- Installs over pre-built curb
- Florida Building Code Approved and Hurricane Tested
- 25-year product warranty and made in the USA



BLACK	MODEL #		PRODUCT DESCRIPTION
	BRONZE	GRAY	
10KFCMBL	10KFCMBR	10KCM	10" Curb Mount Roof Kit (output up to 150 sf)
13KFCMBL	13KFCMBR	13KCM	13" Curb Mount Roof Kit (output up to 300 sf)
18KFCMBL	18KFCMBR	18KCM	18" Curb Mount Roof Kit (output up to 500 sf)
N/A	N/A	21KFCM	21" Curb Mount Roof Kit (output up to 700 sf)

## LIGHT PIPE EXTENSION - 1 FOOT SECTION



- Available for:  
10", 13", 18", and 21" models

MODEL	PRODUCT
10P1	10" - 1 ft section
13P1	13" - 1 ft section
18P1	18" - 1 ft section
21P1	21" - 1 ft section

## ELECTRIC LIGHT KIT - SINGLE SOCKET



- Available for:  
10", 13", 18", and 21" models
- Single light socket
- Use with CFL or LED bulbs

MODEL	PRODUCT
LK	Light Kit - Single

## LIGHT PIPE EXTENSION - 2 FOOT SECTION



- Available for:  
10", 13", 18", and 21" models

MODEL	PRODUCT
10P	10" - 2 ft section
13P	13" - 2 ft section
18P	18" - 2 ft section
21P	21" - 2 ft section

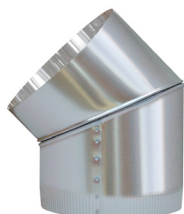
## ELECTRIC LIGHT KIT - DUAL SOCKET



- Available for:  
10", 13", 18", and 21" models
- Double light socket
- Use with CFL or LED bulbs

MODEL	PRODUCT
LK-2	Light Kit - Dual

## ANGLE ADAPTER / ELBOW



- 10" and 13" - adjusts 0° - 45°
- 18" and 21" - adjusts 0° - 30°

MODEL	PRODUCT
10E	10" Elbow
13E	13" Elbow
18E	18" Elbow
21E	21" Elbow

## TURRET EXTENSION



- Available for:  
10" and 13" models
- Used on high profile S-tile roofs

MODEL	PRODUCT
10TE	10" Turret
13TE	13" Turret

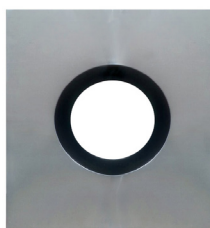
## EXHAUST VENT KIT (SVFAN)



- Available for 10" models
- Perfect for bath & laundry rooms
- Quiet motor exhausts 125 cfm
- Installs alone or with light kits

MODEL	PRODUCT
SVF	Exhaust Vent Kit

## TILE FLASHING SKIRT



- Available for:  
10", 13", and 18" models
- Used for tile installation

MODEL	PRODUCT
10S	10" Tile Skirt
13S	13" Tile Skirt
18S	18" Tile Skirt

## DIMMER KIT WITH REMOTE CONTROL



May also be hardwired using a momentary switch.

MODEL	PRODUCT
10DM	10" Dimmer Kit
13DM	13" Dimmer Kit
18DM	18" Dimmer Kit
21DM	21" Dimmer Kit

**WORKS WITH K SERIES PRODUCTS ONLY!**

**INDIVIDUAL COMPONENTS ALSO  
AVAILABLE, PLEASE CALL FOR PRICING.**



#### COMPOSITE FLASHING RIGID TUBULAR SKYLIGHT KIT

The Kennedy Rigid Tubular Skylights are designed for attic spaces with long straight runs. These rigid tubular skylights funnel that light directly into your home. They are built with the highest quality materials. The patented diffuser allows the natural light to be evenly distributed in the room where it is installed.

MODEL #	PRODUCT DESCRIPTION
EZ10SCANH	10" Composite Flashing Rigid Kit (output up to 150 sf)
EZ14SCANH	14" Composite Flashing Rigid Kit (output up to 300 sf)



#### COMPOSITE FLASHING FLEX TUBULAR SKYLIGHT KIT

The Kennedy Flex Tubular Skylights are designed for obstructed attic spaces that need flexible tubing to bend and funnel that light through the flex pipe into your home. They are built with the highest quality materials. The patented diffuser allows the natural light to be evenly distributed in the room where it is installed.

MODEL #	PRODUCT DESCRIPTION
EZ14SCAFX	14" Composite Flashing Flex Kit (output up to 150 sf)





#### BLOCKOUT SHADES



- Easy to use kit blocks light from Tubular Skylight in situations where no light is needed
- Includes 40" rod for easy use

The Blockout Shade from Kennedy Skylights is a necessity if you're looking to darken a room from the natural light. This accessory is designed to be quick and easy to use for your convenience.

MODEL	PRODUCT
10BO	10" Blockout Shade
14BO	14" Blockout Shade

#### DIFFUSERS



- Soft White Flat Diffuser
- Soft White Curved Diffuser
- Prismatic Flat Diffuser
- Prismatic Curved Diffuser

MODEL	PRODUCT
EZ10FD	10" Diffuser Prismatic Flat
EZ14FD	14" Diffuser Prismatic Flat

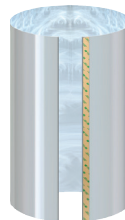
#### LIGHT KIT



- Expands the features of your Tubular Skylight to include a traditional on/off light
- Ideal if you live in a region where days are short in the winter, or if you use a room frequently at night
- Turns your Tubular Skylight into an electric light and still brings in the natural light during the brighter days

MODEL	PRODUCT
EZELK	10" & 14" Light kit

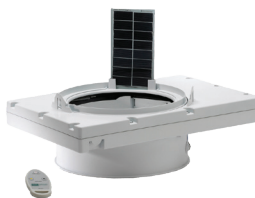
#### EXTENSION TUBE



- Accommodates a length longer than 48" from roof to ceiling
- Extension tubes are made of the same reflective materials as the standard ones
- Extension tubes come in 20" and 48" lengths

MODEL	PRODUCT
EZ10T20	10" Extension Tube - 20" Length
EZ10T48	10" Extension Tube - 48" Length
EZ14T20	14" Extension Tube - 20" Length
EZ14T48	14" Extension Tube - 48" Length

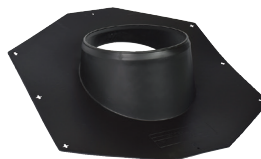
#### SOLAR POWERED DIMMER WITH REMOTE



- Allows you to select the light level you want in the room, from closed to open and anywhere in between
- Eliminates glare on televisions and display screens
- Darken the room for a daytime nap
- An on/off night light feature lets you maintain a low light level in the room
- Two long-lasting LED night lights are included

MODEL	PRODUCT
ECL10	10" Solar Powered Dimmer

#### FLASHING



- Composite/Asphalt Flashing
- Available for: 10" and 14" models

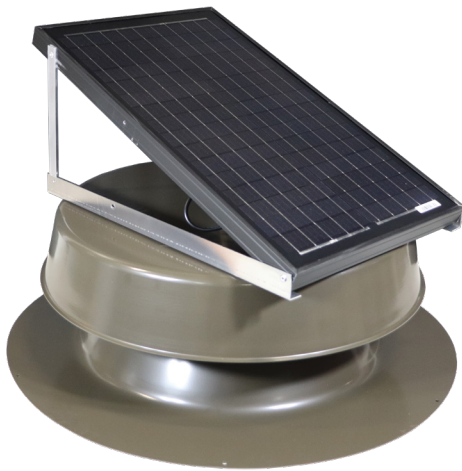
MODEL	PRODUCT
15947000R	10" Flashing
17959000R	14" Flashing

**WORKS WITH EZ SERIES PRODUCTS ONLY!**

**INDIVIDUAL COMPONENTS ALSO  
AVAILABLE, PLEASE CALL FOR PRICING.**

#### ROOF MOUNT SOLAR ATTIC FAN

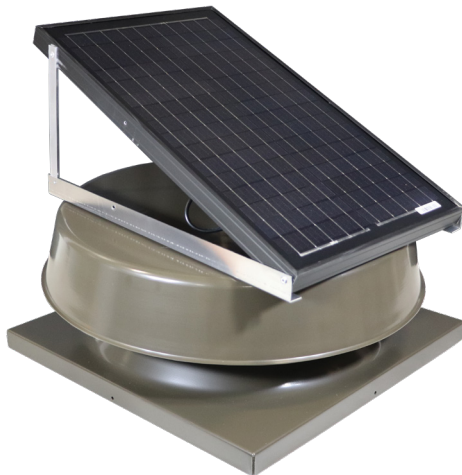
- 16, 32, and 48 watt models with adjustable solar panel
- Fully functional right out of box
- Powder-coated Black, Gray and “Patrician Bronze” aluminum flashing
- Fits all roof slopes and roof types
- Hurricane Tested and Approved
- 25-year product warranty and made in the USA



BLACK	MODEL # BRONZE	GRAY	PRODUCT DESCRIPTION
SAF16BL	SAF16BR	SAF16GR	16 Watt Roof Mount (output up to 1,184 cfm)
SAF32BL	SAF32BR	SAF32GR	32 Watt Roof Mount (output up to 1,560 cfm)
SAF48BL	SAF48BR	SAF48GR	48 Watt Roof Mount (output up to 1,881 cfm)

#### CURB MOUNT SOLAR ATTIC FAN

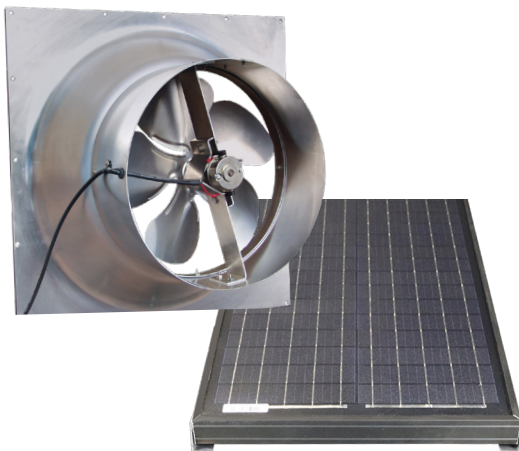
- 16, 32, and 48 watt models with adjustable solar panel
- Fully functional right out of box
- Powder-coated Black, Gray and “Patrician Bronze” aluminum flashing
- Installs over pre-built curbs
- Hurricane Tested and Approved
- 25-year product warranty and made in the USA



BLACK	MODEL # BRONZE	GRAY	PRODUCT DESCRIPTION
SAF16BLCM	SAF16BRCM	SAF16GRCM	16 Watt Roof Mount (output up to 1,184 cfm)
SAF32BLCM	SAF32BRCM	SAF32GRCM	32 Watt Roof Mount (output up to 1,560 cfm)
SAF48BLCM	SAF48BRCM	SAF48GRCM	48 Watt Roof Mount (output up to 1,881 cfm)

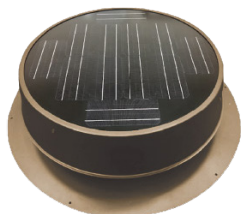
#### GABLE MOUNT SOLAR ATTIC FAN KIT

- Available in 4 sizes: 16, 32, 48, and 65 watt models
- Fan housing installs into existing gable opening
- Solar panel installed remotely on roof
- Fits all roof slopes and roof types
- 25-year product warranty and made in the USA



MODEL #	PRODUCT DESCRIPTION
SAF16G	16 Watt Gable Mount (output up to 1,184 cfm)
SAF32G	32 Watt Gable Mount (output up to 1,560 cfm)
SAF48G	48 Watt Gable Mount (output up to 1,881 cfm)
SAF65G	65 Watt Gable Mount (output up to 2,105 cfm)

#### LOW PROFILE and TILE ROOF PROFILE



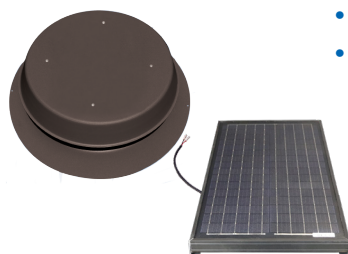
- Solar panel can be easily replaced without removing the fan flashing
- Roof-hugging, aesthetically pleasing Ultra-Low Profile
- Slightly taller version for tile roofs

MODEL # BLACK	MODEL # BRONZE	MODEL # GRAY	PRODUCT DESCRIPTION
SAF35BLLP	SAF35BLLPCM	SAF35GRLP	35 Watt Ultra-Low Profile (output up to 1,597 cfm)
SAF35BLTP	SAF35BRTP	SAF35GRTP	35 Watt Tile Roof Profile (output up to 1,597 cfm)
SAF35BLLPCM	SAF35BRLPCM	SAF35GRLPCM	35 Watt Ultra-Low Profile Curb Mount (output up to 1,597 cfm)



ROOF PITCHES

#### ROOF MOUNT with REMOTE SOLAR PANEL



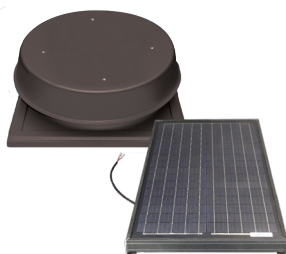
- Solar panel installed in sunny location away from housing
- "Patrician Bronze" housing - custom colors available

MODEL # BLACK	MODEL # BRONZE	MODEL # GRAY	PRODUCT DESCRIPTION
SAF16BL-REMOTE	SAF16BR-REMOTE	SAF16GR-REMOTE	16 Watt Flat Roof / Remote (output up to 1,184 cfm)
SAF32BL-REMOTE	SAF32BR-REMOTE	SAF32GR-REMOTE	32 Watt Flat Roof / Remote (output up to 1,560 cfm)
SAF48BL-REMOTE	SAF48BR-REMOTE	SAF48GR-REMOTE	48 Watt Flat Roof / Remote (output up to 1,881 cfm)
SAF65BR-REMOTE	SAF65BR-REMOTE	SAF65GR-REMOTE	65 Watt Flat Roof / Remote (output up to 2,105 cfm)



ROOF PITCHES

#### CURB MOUNT with REMOTE SOLAR PANEL



- Solar panel installed in sunny location away from housing
- "Patrician Bronze" housing - custom colors available

MODEL # BLACK	MODEL # BRONZE	MODEL # GRAY	PRODUCT DESCRIPTION
SAF16CMBL-REMOTE	SAF16CMBR-REMOTE	SAF16CMGR-REMOTE	16 Watt Flat Roof / Remote (output up to 1,184 cfm)
SAF32CMBL-REMOTE	SAF32CMBR-REMOTE	SAF32CMGR-REMOTE	32 Watt Flat Roof / Remote (output up to 1,560 cfm)
SAF48CMBL-REMOTE	SAF48CMBR-REMOTE	SAF48CMGR-REMOTE	48 Watt Flat Roof / Remote (output up to 1,881 cfm)
SAF65CMBL-REMOTE	SAF65CMBR-REMOTE	SAF65CMGR-REMOTE	65 Watt Flat Roof / Remote (output up to 2,105 cfm)



ROOF PITCHES

#### THERMAL SNAP SWITCH



- Turns fan on when attic temperature reaches 80°F
- Turns off at 70°F

MODEL	PRODUCT
SAFTS	Thermal Switch

#### FIRE SAFETY SWITCH



- Helps prevent spread of attic fires by shutting down fan
- Install alone or with a thermal switch

MODEL	PRODUCT
FSCS	Fire Safety Switch

#### GARAGE VENT KIT



- Converts roof or curb mount fan into garage venting system
- Radiation Damper available (required in some locations)

MODEL	PRODUCT
Garage Vent	Garage Vent
Garage Vent W/D	Garage Vent w/Damper

#### TILE FLASHING SKIRT



- Used for tile installations
- Installs over flashing for Weather-tight installation

MODEL	PRODUCT
13S	Flashing Skirt

#### TURRET EXTENSION



- Used on high profile S-tile roofs
- Includes protective animal screen

MODEL	PRODUCT
SAF-EXT	Turret

**INDIVIDUAL COMPONENTS ALSO  
AVAILABLE, PLEASE CALL FOR PRICING.**



**WARNING:** Please take the time to read through the ENTIRE instructions prior to starting any work. Not following the instructions will invalidate the warranty.

Installation should only be completed by individuals skilled with the necessary tools for installation. If you doubt your skills, please consult a qualified installer.

## Tools Needed:

- Safety Glasses
- Saw
- Hammer
- Utility Knife
- Crow Bar
- Sealant Gun
- Tape Measure
- #8 x 1 5/8" Truss Head Drywall Screws
- Shingles
- Roofing Felt
- Sealant
- 2" x 4" Lumber
- Plywood/Drywall
- Level/Plumb Bob

## Important Precautions:

Skylights are subject to condensation caused by warm moist air rising from the room below. Insulate the light shaft and other areas surrounding skylight to minimize condensation. In some cases, the light shaft may require special ventilators to remove moist air.

- To prevent roof failure and possible injury, be sure the skylight remains adequately supported by the roof, if either headers or rafters are setback from edge of the rough opening.

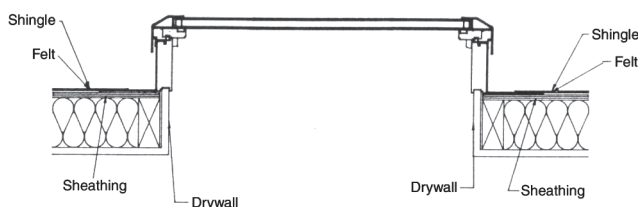
## Important Warnings:

- Do not cut roof trusses. If trusses must be cut, obtain expert guidance from an architect, structural engineer, or roof truss manufacturer. Work from professionally prepared plans.
- Support the roof with braces before cutting rafters, to prevent roof failure which can cause severe injury and structural damage.
- Obtain guidance from an architect or structural engineer, if more than one rafter is cut to prevent roof failure and possible injury.

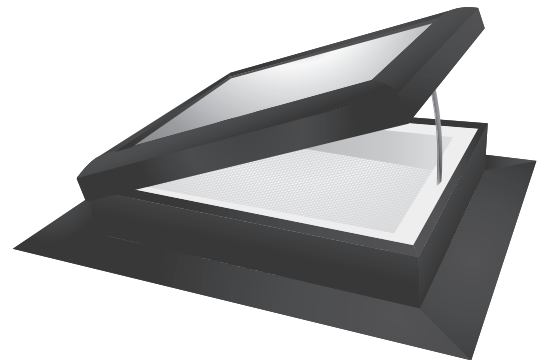
## Important Safety Notes:

- Remove nails and other obstructions to prevent them from being thrown while cutting.
- Be sure electrical wires, pipes, and other building components will not be cut or damaged.
- Wear eye protection and follow safety procedures recommended by the saw manufacturer.
- To avoid injury or damage, use blocks or bracing to prevent cutout section from dropping as it is freed.
- Stay clear of cutting area while sawing; be especially careful of hand placement and falling debris on the interior, underneath the work area.

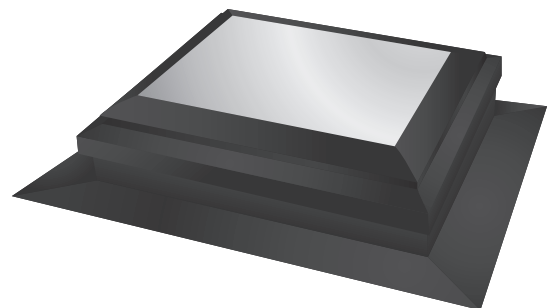
## Horizontal Cross Section:



## Self-Flashing Ventilating Glass Skylight (SFVG)



## Self-Flashing Glass Skylight (SFG)

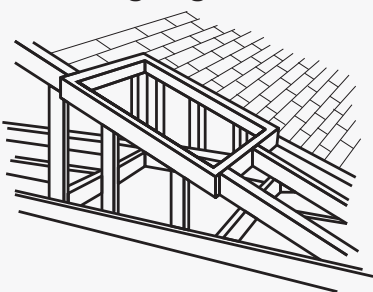


## Standard Skylight Sizes:


Model SFG/SFVG	Rough Opening width x length
1430	14.5" x 30.5"
1446	14.5" x 46.5"
2222	22.5" x 22.5"
2230	22.5" x 30.5"
2246	22.5" x 46.5"
4622	46.5" x 22.5"
2269	22.5" x 69.5"
3030	30.5" x 30.5"
3046	30.5" x 46.5"
4646	46.5" x 46.5"



## Building Light Tunnel

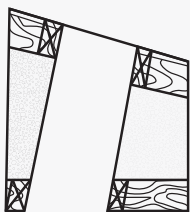


In structures that have a space between the ceiling and the roof such as an attic or crawl space, a light tunnel must be built. Nailers of 2" x 4" must be used to frame the opening between the roof header and the ceiling header. These will be used for attaching the finishing material, i.e., drywall, wall board, plywood, etc. The light tunnel should be wrapped with insulation for optimum performance. Select the desired shaft, and frame accordingly.

 Indicates 2"X4" Headers

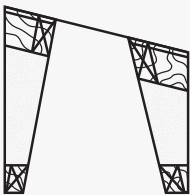
### ANGLED SHAFT

An angled shaft is required when the skylight cannot be positioned directly above the area to be lighted because of existing pipes, electrical wiring, duct work, or roof limitations such as ridges or valleys. Locate the skylight as close to the desired areas as possible, and then build the shaft on an angle to the ceiling opening.



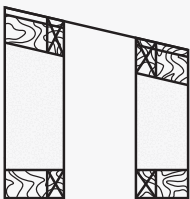
### SPLAYED SHAFT

The splayed shaft is used to permit the greatest light exposure. This is done by making the ceiling opening larger than the roof opening.



### STRAIGHT SHAFT

A straight shaft from the roof to ceiling can be used. If the roof is flat the ceiling and roof openings will be the same dimension. With a pitched roof, however, the roof opening will be slightly larger than the ceiling opening.



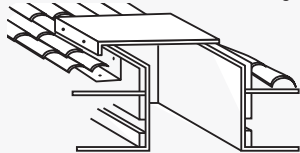
## Built-Up Roofs:

(Use SFG 4" model or check local building codes.)

Carefully apply hot pitch or sealant to the surrounding area and base of curb flange. Cover with rock.

## Barrel Tile Instructions:

(Use 4" or 6" curb. Check local building codes.)



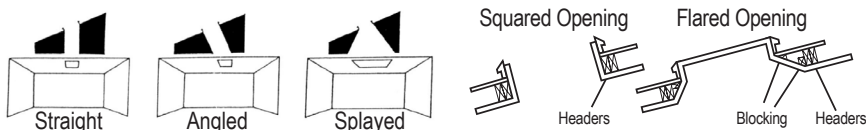
After locating skylight position on roof, carefully remove barrel tiles and cut rough opening. Center skylight over rough opening, and secure into place using pre-punched holes in flange. Mop in roll roofing over flashing. Cement tiles on roof around curb and skylight assembly. Finish inside curb with drywall and trim.

## Planning

### Step 1 - Identify Desired Location

- ▶ Overhead Placement: Consider natural light, sunshine and shade.
- ▶ Eye Level Placement: Consider natural light, sunshine and shade. To optimize the view, the eye level is from 56" to 67" from the floor.
- ▶ Obstructions: Consider HVAC duct, gas/water pipes, and electrical devices.

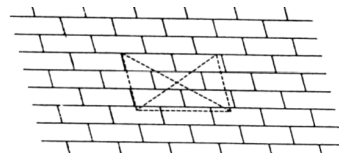
### Step 2 - Determine Type of Light Shaft & Header Setback



## Prepare Rough Opening

### Step 3 - Measure and Mark Corners

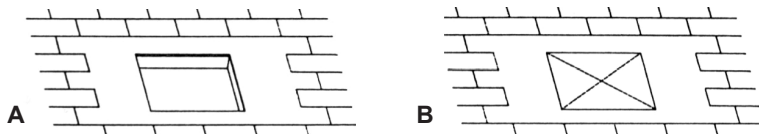
Locate position by measuring from a known point such as a vent passing through the roof. Mark rectangular opening.



**IMPORTANT:** Corners may be located by driving nails through roof from inside.

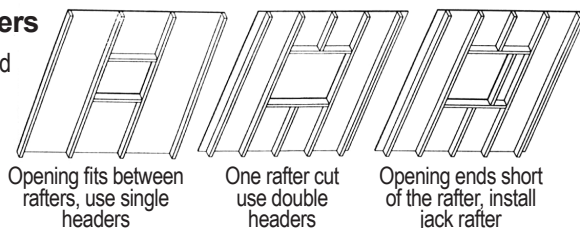
### Step 4 - Remove Shingles and Nails

Remove shingles and nails from area at least 10" back from opening. Mark rough opening (A) by stretching and snapping a chalkline, and cut opening (B).



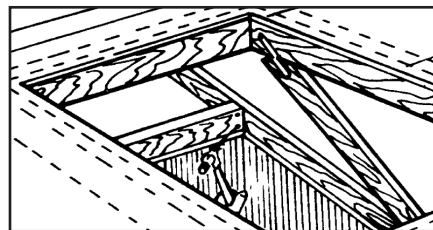
### Step 5 - Install Headers

Based on size of opening and rafter pattern.



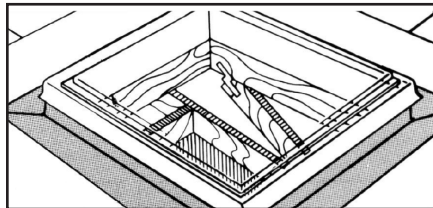
## Install Skylight

**Step 6** Frame out the inside of the roof opening with double headers at the top and bottom of the opening. Butt 2x4's against the outside of the truss or rafters that frame the opening, and nail into place to provide extra stability when mounting the skylight. Any rafter or truss that runs through the skylight opening must be cut to meet local building codes.



**IMPORTANT NOTE:** If the opening is too big, fill it in with the proper lumber to the suggested rough opening size or smaller. Install roofing felt and shingle to bottom of the opening.

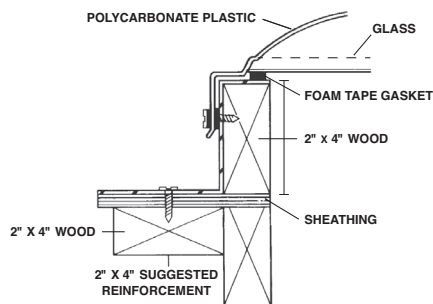
**Step 7** Apply a liberal amount of sealant to the surrounding roof opening. Carefully center the skylight into place. Using pre-punched holes in flange, secure to roof surface using #8x1 5/8" Truss Head Drywall Screws. Apply liberal amount of sealant to cover each hole, fastener, and the outside of curb flange.



**Pitched Roofs:** Replace shingles, covering base of curb flange. For impact glass units, use #10 x 1 5/8" Truss Head Drywall Screws (supplied).



## SFAW Horizontal Cross Section:



## Important Precautions:

Skylights are subject to condensation caused by warm moist air rising from the room below. Insulate the light shaft and other areas surrounding skylight to minimize condensation. In some cases, light shaft may require special ventilators to remove moist air.

- To prevent roof failure and possible injury, be sure skylight remains adequately supported by roof if either headers or rafters are setback from edge of the rough opening.

## Important Warnings:

- Do not cut roof trusses. If trusses must be cut, obtain expert guidance from an architect, structural engineer, or roof truss manufacturer. Work from professionally prepared plans.
- Support roof with braces before cutting rafters to prevent roof failure which can cause severe injury and structural damage.
- Obtain guidance from an architect or structural engineer, if more than one rafter is cut, to prevent roof failure and possible injury.

## Important Safety Notes:

- Remove nails and other obstructions to prevent them from being thrown while cutting.
- Be sure electrical wires, pipes, and other building components will not be cut or damaged.
- Wear eye protection and follow safety procedures recommended by saw manufacturer.
- To avoid injury or damage, use blocks or bracing to prevent cutout section from dropping as it is freed.
- Stay clear of cutting area while sawing; be especially careful of hand placement and falling debris on the interior, underneath work area.

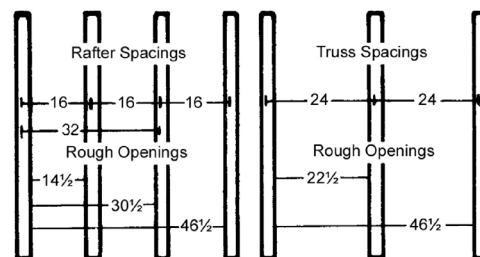
Model Size	Rough Opening width x length
1414	14.5" x 14.5"
1422	14.5" x 22.5"
1430	14.5" x 30.5"
1446	14.5" x 46.5"
2222	22.5" x 22.5"
2230	22.5" x 30.5"
2246	22.5" x 46.5"
2269	22.5" x 69.5"
3030	30.5" x 30.5"
3046	30.5" x 46.5"
4646	46.5" x 46.5"

## Tools and Materials Needed:

- Safety Glasses
- Saw
- Hammer
- Utility Knife
- Crow Bar
- Sealant Gun
- Tape Measure
- #8 x 1 5/8" Truss Head Drywall Screws
- Shingles
- Roofing Felt
- Sealant
- 2" x 4" Lumber
- Plywood/Drywall
- Level/Plumb Bob
- Screwdriver
- Drill

## Planning

Installation is easy - no special tools are required. The skylights fit between standard rafters, roof trusses or exposed beams using a light tunnel when necessary (see back page).



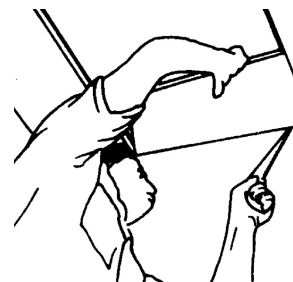
**READ COMPLETELY BEFORE STARTING**

## SAF and SFAW Installation

The SFA and SFAW are curb mounted Polycarbonate Skylights complete with curb (SFA foamliner) and (SFAW prefinished wood interior).

### Step 1

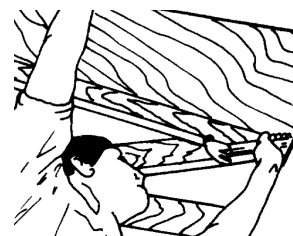
Determine the skylight location inside the house and what lighting effects you want. Check in attic for plumbing pipes, electrical and telephone wiring or heating and cooling ducts. Mark the center of the planned location by driving a nail through the roof from inside. Locate the truss or rafter and cut opening in ceiling.



**IMPORTANT NOTE:** Rough openings should be made to the suggested sizes (see standard size chart).

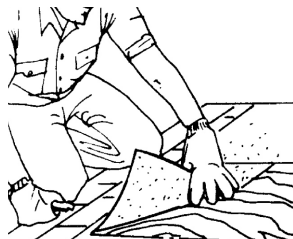
### Step 2

In the attic, using a plumb bob or level, plumb up from the four corners in the ceiling to the underside of the roof sheathing. Mark them by driving nails through the roof.

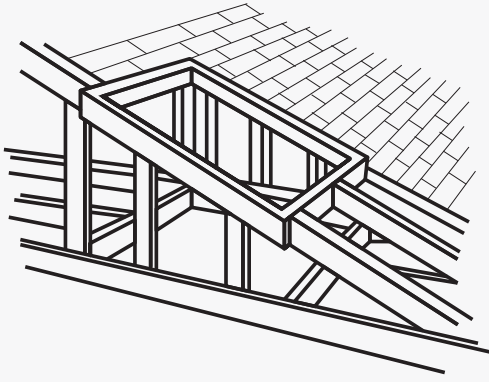


### Step 3


Remove roofing shingles to next full shingle and from the top and sides of the planned opening. Do not remove shingles at bottom of opening.



## Building Light Tunnel

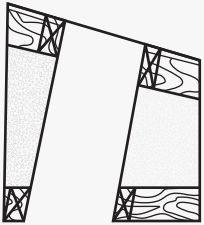


In structures that have a space between the ceiling and the roof such as an attic or crawl space, a light tunnel must be built. Nailers of 2" x 4" must be used to frame the opening between the roof header and the ceiling header. These will be used for attaching the finishing material, i.e., drywall, wall board, plywood, etc. The light tunnel should be wrapped with insulation for optimum performance. Select desired shaft and frame accordingly.

 Indicates 2"X4" Headers

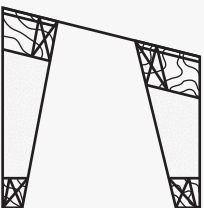
### ANGLED SHAFT

An angled shaft is required when the skylight cannot be positioned directly above the area to be lighted because of existing pipes, electrical wiring, duct work, or roof limitations such as ridges or valleys. Locate the skylight as close to the desired areas as possible, and then build the shaft on an angle to the ceiling opening.



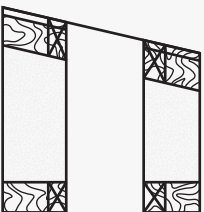
### SPLAYED SHAFT

The splayed shaft is used to permit the greatest light exposure. This is done by making the ceiling opening larger than the roof opening.



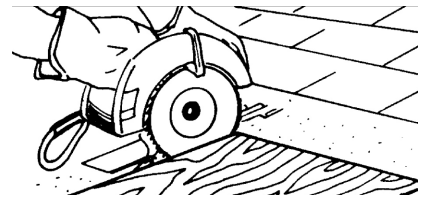
### STRAIGHT SHAFT

A straight shaft from the roof to ceiling can be used. If the roof is flat the ceiling and roof openings will be the same dimension. With a pitched roof, the ceiling opening will be slightly smaller than the roof opening.



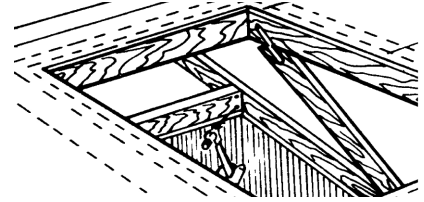
### STEP 4

Cut opening in roof decking. Replace any torn felt paper. Slip the new paper under the old paper at the top of the opening and over the old paper at the bottom.



### STEP 5

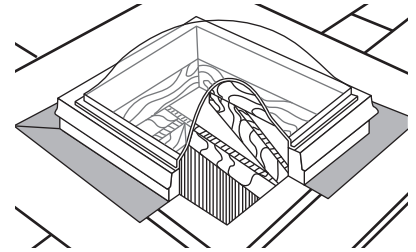
Frame out the inside of the roof opening with double headers at the top and bottom of the opening. Butt 2x4s against the outside of the truss or rafters that frame the opening and nail into place to provide extra stability when mounting the skylight. (Note dotted lines on drawing.) Re: Large skylights. Any rafter or truss that runs through the skylight opening must be cut to meet local building codes.



**IMPORTANT NOTE:** If the opening is too big, fill it in with the proper lumber to the suggested rough opening size. (See standard size chart.)

### STEP 6

Apply liberal amount of sealant to surrounding roof surface. Carefully center curb. Using pre-punched holes in flange, secure to roof surface. Apply sealant to cover holes and fasteners, and outside edge of flange.



**Pitched Roofs:** Replace shingles, covering base of flange. Shim skylight to curb for snug fit.

### BUILT-UP ROOFS:

Carefully apply hot pitch or sealant to surrounding area and base of curb flange. Cover with rock.

### ICMG, HCMA, HSAW:

Use #10 x 1 5/8" mounting screws provided.

## CM and CMG Installation

The CM is a curb mount Polycarbonate skylight and the CMG is a curb mount Insulated Glass Skylight.

Apply sealant/mastic around entire curb top. Carefully center skylight on the curb and push down to ensure a good seal. Nail or screw in place through the pre-drilled holes in the side using weather-resistant fasteners. Do **NOT** use Geocel 2300® or any other incompatible sealant.

**NOTE:** CMG and ICMG models have gasket material already applied to inside of skylight. No sealant required.

**NOTE:** Use Kennedy Model (AC) Aluminum curb or (ACW) Aluminum Curb with pre-finished wood interior. May also use an existing curb or a site-built curb.



Kennedy  
Skylights

5294 Tower Way  
Sanford, FL 32773



# Self-Flashing Polycarbonate Model - SF Installation Instructions



**WARNING:** Please take the time to read through the **ENTIRE** instructions prior to starting any work. Not following the instructions will invalidate the warranty.

**NOTE:** Installation should only be completed by individuals skilled with the necessary tools for installation. If you doubt your skills, please consult a qualified installer.

## Self-Flashing Polycarbonate Skylight



**Instructions are for roofs of greater than 3:12 pitch.**

**NOTE:** Compatible glazing tapes and ice/water shields may be used in place of sealants.

## Suggested Sealants

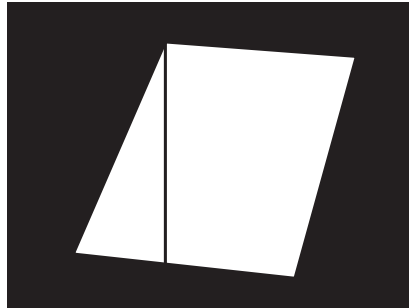
### BUTYL SYNTHETIC RUBBER SEALANTS

- Tremco, Inc. TremPro JS-773 Butyl Sealant Off White
- Henkle Corp. PL Ultimate Hybrid Sealant White
- Loctite Loctite Power Grab All Purpose Clear
- Liquid Nails - MACCO Silicone Premium Universal Sealant Clear

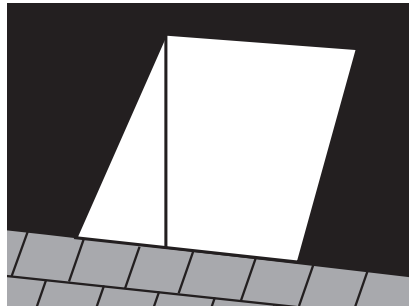
Do not put roofing mastic or hot steep asphalt on the transparent plastic skylight. For best results use a high grade sealant material that has a long life. Low grade sealants should not be used.

**NOTE:** Check with the sealant manufacturer or dealer for compatibility with polycarbonate plastic.

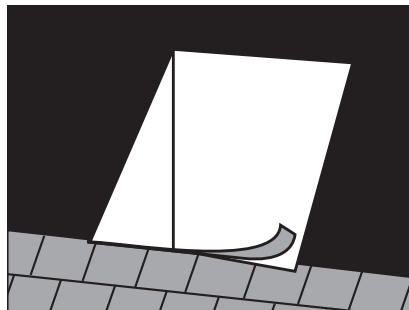
*This information is supplied in good faith, without charge and recommendation as to its use. No guarantee of results of any use of the information is to be implied, since the conditions of use are beyond our control.*



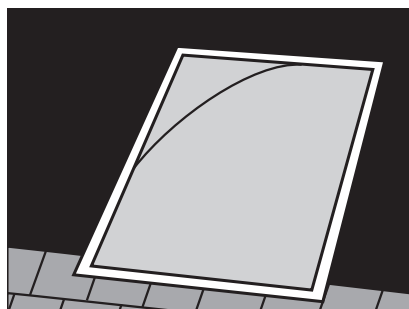
**1** Be sure opening is accurately sized (see sizing chart) and is located properly. Check for squareness. Roof felt should already be applied.



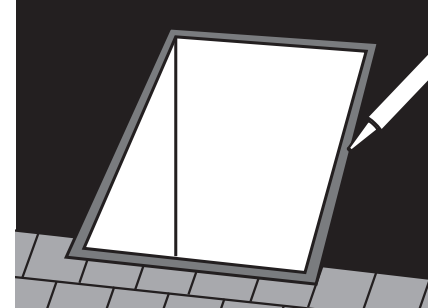
**2** Apply shingles to roof, stopping just past the skylight opening.



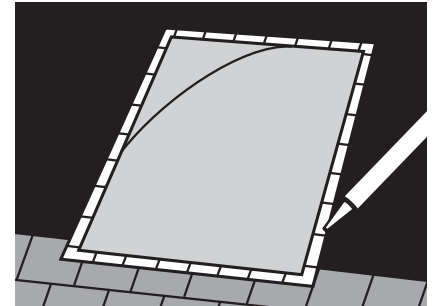
**3** Trim any excess shingles out of opening.



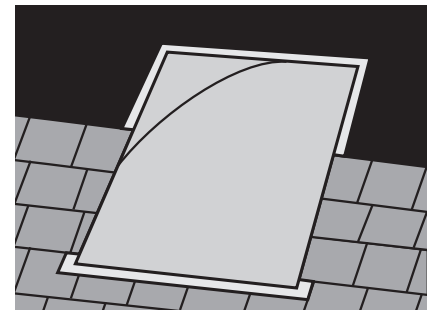
**4** Apply three heavy beads of approved or compatible sealant around the opening.



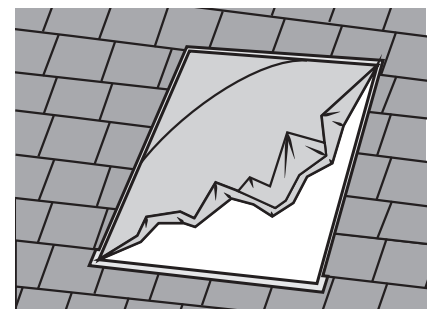
**5** Place skylight over opening, being sure to center skylight and keeping it square to the opening. Bottom flange overlaps shingles.



**6** Fasten in place using 1 1/4" screws or ring shank galvanized roofing nails. Apply sealant to top of fastener. Apply sealant around perimeter of skylight.

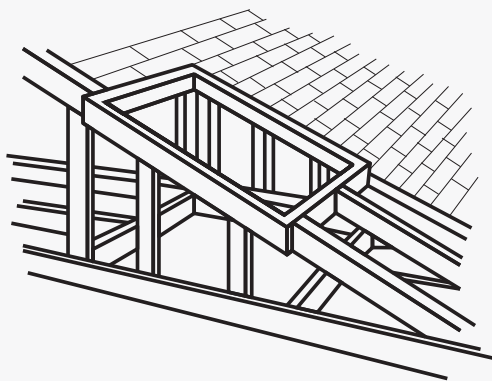


**7** Complete shingle application around skylight.




**8** Remove protective packaging film from skylight

## Building Light Tunnel

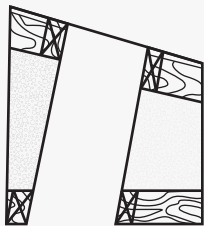


In structures that have a space between the ceiling and the roof such as an attic or crawl space, a light tunnel must be built. Nailers of 2" x 4" must be used to frame the opening between the roof header and the ceiling header. These will be used for attaching the finishing material, i.e., drywall, wall board, plywood, etc. The light tunnel should be wrapped with insulation for optimum performance. Select desired shaft and frame accordingly.

 Indicates  
2"X4" Headers

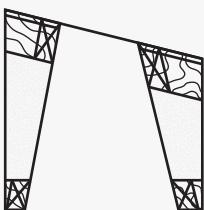
### ANGLED SHAFT

An angled shaft is required when the skylight cannot be positioned directly above the area to be lighted because of existing pipes, electrical wiring, duct work, or roof limitations such as ridges or valleys. Locate the skylight as close to the desired areas as possible and then build the shaft on an angle to the ceiling opening.



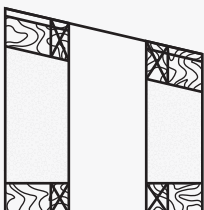
### SPLAYED SHAFT

The splayed shaft is used to permit the greatest light exposure. This is done by making the ceiling opening larger than the roof opening.



### STRAIGHT SHAFT

A straight shaft from the roof to ceiling can be used. If the roof is flat, the ceiling and roof openings will be the same dimension. With a pitched roof, the ceiling opening will be slightly smaller than the roof opening.



## Standard Skylight Sizes

Model Size	Rough Opening width x length
1414	14.5" x 14.5"
1422	14.5" x 22.5"
1430	14.5" x 30.5"
1446	14.5" x 46.5"
2222	22.5" x 22.5"
2230	22.5" x 30.5"
2246	22.5" x 46.5"
2269	22.5" x 69.5"
3030	30.5" x 30.5"
3046	30.5" x 46.5"
4646	46.5" x 46.5"

## Cleaning and Maintenance

When you clean your Polycarbonate skylight, use chemically compatible cleaners to ensure continued performance and product life. Your skylight(s) are U.V. protective coated and constructed of polycarbonate sheets.

1. Wash skylight with mild soap or cleaning agent and lukewarm water. Rinse with clear water.
2. Use soft cloth or sponge when gently washing (DO NOT SCRUB), and dry gently and thoroughly with chamois or cellulose sponge.

### Some Compatible Cleaning Materials:

- Formula 409® (Clorox Company trademark)
- VM & P grade Naphtha
- Joy® (Proctor & Gamble trademark)
- Windex with Ammonia D® (Drackett Products trademark)
- Top Job® (Proctor & Gamble trademark)

### Some Incompatible Cleaning Agents:

- Lysol® (Sterling Drugs trademark)
- Pine Sol® (American Cyanamid trademark)

### Fresh Paint, Grease, and Glazing Compound Removal:

Remove above before drying by wiping with a soft cloth saturated with VM & P Naphtha. Then wash as in cleaning instructions.

### Label and Sticker Removal:

VM & P Naphtha will generally remove masking and other label adhesives. Wash afterwards as in cleaning instructions. Excessive rubbing or scraping can damage skylight surface.

### Cautions:

Benzene, gasoline, acetone, or carbon tetrachloride should not be used on our skylights. Use no abrasive or alkaline cleaners. Avoid scraping with razor blades or other instruments. Do not clean skylights in direct sunlight or at elevated temperatures.



Kennedy  
Skylights

5294 Tower Way  
Sanford, FL 32773





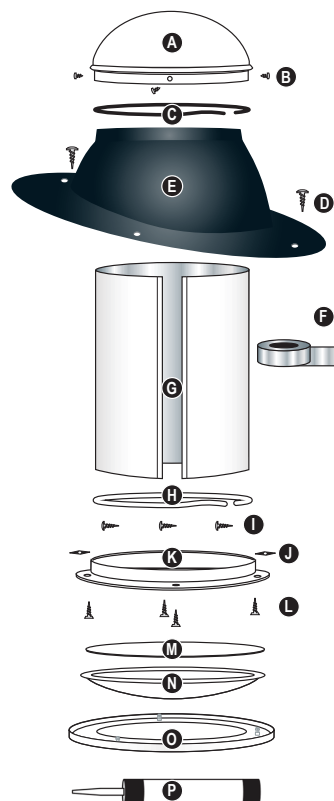
**WARNING:** Please take the time to read through the ENTIRE instructions prior to starting any work. Not following the instructions will invalidate the warranty.

## Tools Needed:

- Caulking Gun
- Drill
- Drywall Saw
- Flashlight
- Flat Bar
- Hammer
- Marking Pencil
- Measuring Tape
- Reciprocating Saw
- Safety Goggles
- Screwdriver
- Stud Finder
- String
- Tin Snips
- Utility Knife
- Wire

## Important Precautions:

- Light pipe material is very sharp when cut. Please use extreme caution when handling the light pipe.
- Light pipe is very bright, use proper eye protection when installing. **AVOID LEAVING THE PIPE EXPOSED TO THE SUN WITHOUT THE PROTECTIVE COATING OR DIFFUSERS IN PLACE PRIOR TO INSTALLATION.** (Protective coating should only be removed at Step 14.)
- Ensure normal safety precautions are taken when using tools and walking on roofs. Measure twice and cut once.
- Do not cut any structural members in the house.
- Ensure wire runs, plumbing or ventilation ducts will not interfere with the light pipe installation.

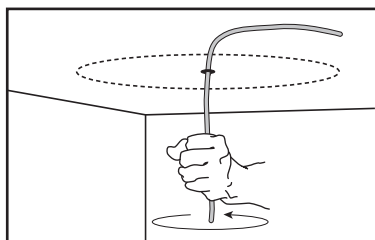


## Kit Components:

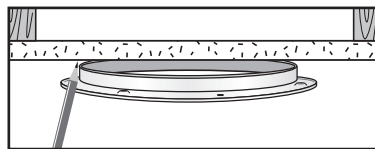
- A. Clear acrylic dome
- B. (4) Phillips 1/4" screws
- C. Black nylon horsehair gasket
- D. (6) Phillips 1 1/2" screws
- E. Heavy-duty aluminum flashing
- F. Foil tape
- G. (2) 24" reflective light pipes
- H. White nylon horsehair gasket
- I. (8) Tek screws
- J. (4) U-channel PVC tabs
- K. (3) Black speed nuts
- L. Aluminum ceiling ring
- M. (3) 1 1/2" Phillips flathead screws
- N. (2) small polycarbonate lenses
- O. (1) large polycarbonate lens
- P. Diffuser
- Q. White trim ring
- R. Caulk

## Install Skylight

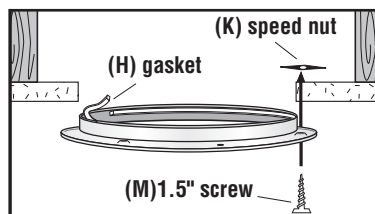
**Step 1** To facilitate installation, once the desired location is obtained, ensure that there are no obstructions in the attic between the roof and ceiling or on the roof. With a stud finder, between joists as close to the desired installation area as possible, mark the center of the ceiling ring (L), drill a hole and insert piece of wire bent at a 90 degree angle. Rotate the wire around 360 degrees. While rotating, feel for resistance that could indicate wire runs or other obstructions.



**Step 2** If there are no obstructions, scribe mark around the ceiling ring inner ring (L). Using a drywall saw, cut out the scribed mark in the ceiling.

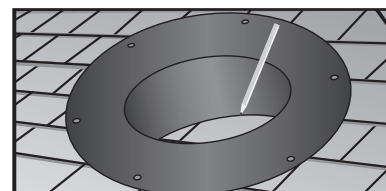


**Step 3** Install the ceiling ring (L) on the ceiling. Place ceiling ring in the hole. Peel the protective covering off the white horsehair gasket (H) and apply gasket to the inner lip of the ceiling ring (L). This gasket ensures a dust free fit between the light pipe and the ceiling ring. Secure the ceiling ring to ceiling by inserting a 1 1/2" Phillips flathead screw (M) into one of the three pre-drilled dimpled holes and screwing it up through the drywall into speed nut (K) provided. Repeat this process for the other two screws.

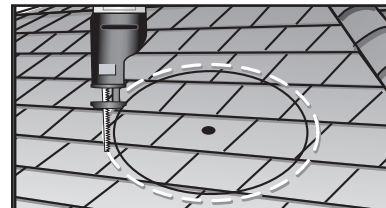


**Step 4** Place a ladder under ceiling ring hole and place a flashlight on top of ladder. The resulting flashlight beam will mark the location for centering hole. With a drill bit and appropriate extension rods, drill a pilot hole in the marked location on bottom side of roof. If attic is accessible, a plumb-bob may also be used.

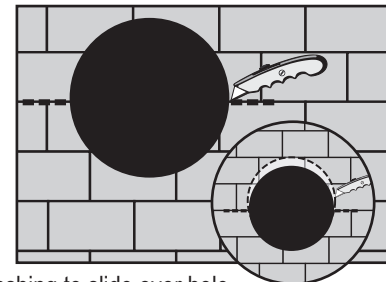
**Step 5** On the roof, locate the centering hole and outline the diameter of the hole that the pipe will pass through by turning the flashing (E) upside down and marking the inside.



**Step 6 IMPORTANT:** Light pipe must pass between roof rafters. **DO NOT CUT THROUGH ANY FRAMING MEMBER.** With a reciprocating saw, cut the diameter of the hole 2" larger than the area marked in step 5.

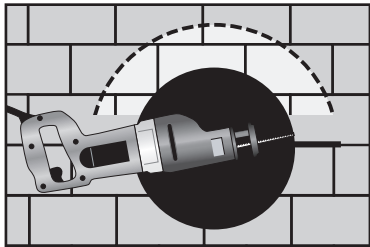


**Step 7** With a utility knife, cut a 4" slit through the shingles and tar paper at the 3 and 9 o'clock positions of the flashing. This allows for the footprint of the flashing to be inserted under the shingles. **NOTE:** Additional shingles may also need to be removed on the high side to allow the flashing to slide over hole.



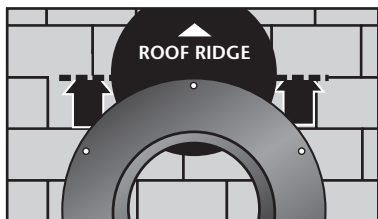


**Step 8** Insert the reciprocating saw blade sideways at the 3 o'clock position and start cutting the roofing nails up and around to the 9 o'clock position. This process removes the nails that will prevent the flashing foot print from sliding up underneath the shingles.



**Step 9** Caulk the underside of the flashing (E) with the provided caulk (R). Two concentric rings of caulking material is sufficient.

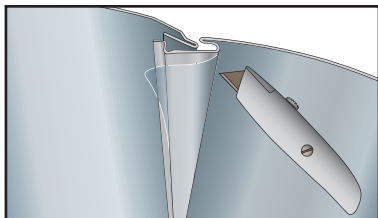
**Step 10** Taking care not to smear caulk on the exposed shingles, slide flashing under tar paper and shingles and force flashing up until the shingles come in contact with the raised portion of the flashing. The bottom side of the flashing will be on top of the shingles. Secure flashing with (6) Phillips head screws (D).



**Step 11** Apply caulk over all exposed screw heads (since they will be exposed to the weather). Use remaining caulk to seal the areas where the 4" slits were made and around area where shingles meet with raised area of the flashing.

**Step 12** Peel the protective backing off the black horsehair gasket (C) and apply gasket on the inner lip of the flashing collar (E).

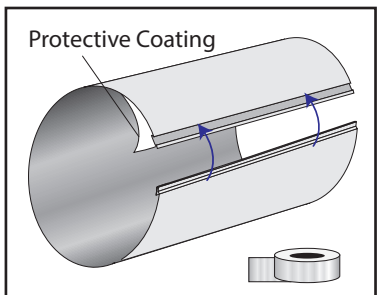
**Step 13** Use a knife to score the protective film by cutting along the outside of the channel of the light pipe. Then peel off all of the protective plastic film from all areas of the light pipe.



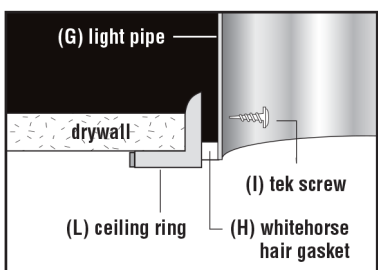
**NOTE:** All of the plastic must be removed to avoid having the color of the plastic reflecting through the diffuser.

**Step 14** To assemble the light tube, insert the light pipe into the channel so that it forms a round tube. After insertion, pull both sides back to ensure the pipe is locked into place.

**IMPORTANT:** Remove protective coating that covers the mirror finish inside the tube.



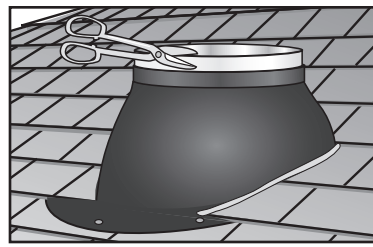
**Step 15** Insert light pipe (G) through the flashing unit with crimped end down and gently rock pipe back and forth with slight downward pressure until pipe terminates evenly with the inner collar of the ceiling ring (L). Trim any excess light pipe with tin snips. Secure bottom of light pipe to ceiling ring with two tek screws



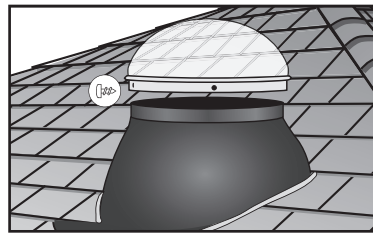
**NOTE:** Use caution, light pipe is extremely sharp.

**Step 16** If there is excess light pipe (G) sticking out of the flashing, using tin snips, cut from the top down to the lip of the flashing and trim off the excess pipe.

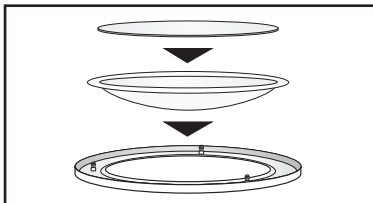
**NOTE:** Use caution, light pipe is extremely sharp.



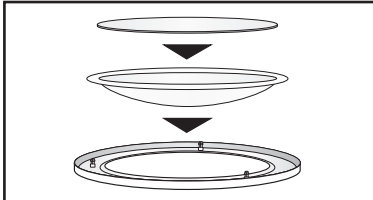
**STEP 17** Place dome (A) on top of the flashing unit (E). Secure the dome to the flashing by screwing (4) 1/4" sheet metal screws (B) through the pre-drilled holes on the dome collar and into the lip of the flashing.



**Step 20** Place the diffuser (P) into the white powder coated trim ring (O). Remove protective film from both sides of large lens (O) and place on top of diffuser (P).



**Step 21** Line up the three steel pins of the white trim ring (O) With the holes on the ceiling ring (L). Push up to snap in place.



*This information is supplied in good faith, without recommendation as to its use and without charge. No guarantee of results of any use of the information is to be implied, since the conditions of use are beyond our control.*



5294 Tower Way  
Sanford, FL 32773



**WARNING:** Please take the time to read through the ENTIRE instructions prior to starting any work. Not following the instructions will invalidate the warranty.

Installation should only be completed by individuals skilled with the necessary tools for installation. If you doubt your skills, please consult a qualified installer.

## Tools Needed:

- Caulking Gun
- Marking Pencil
- Screwdriver
- Drill
- Measuring Tape
- Stud Finder
- Flat Bar
- Reciprocating Saw
- String
- Hammer
- Safety Goggles
- Utility Knife

## Important Precautions:

■ The attic fan is fully functional out of the box. **THE FAN WILL OPERATE AS SOON AS THE SOLAR PANEL IS EXPOSED TO THE SUN. PLEASE USE CAUTION AND AVOID THE FAN BLADES DURING INSTALLATION.**

■ Ensure normal safety precautions are taken when using tools and walking on roofs.

■ Do not cut any structural members in the house.

■ Measure twice and cut once.

## Helpful Hints...

■ When determining location of the unit, try to place the flashing unit on the south side of the roof. Also consider potential problems such as objects shading the unit during certain times of the day.

■ Installation of the unit should be centered on the roof.

■ The center of the unit should be about 2 feet down from the roof ridge.



## Kit Components:

- A. Kennedy Solar Attic Fan unit
- B. (6) #10 Phillips head stainless steel 1 1/2" screws
- C. Caulk

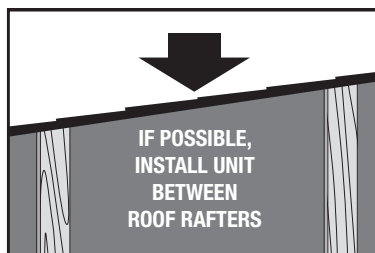
## Install Solar Attic Fan

### IMPORTANT NOTE:

Roof rafters are generally 16" or 24" on center. On 16" on center construction, the installer can either cut a 14" hole between the rafters or cut a 19" hole with the roof rafter running through the cut hole. On 24" on center construction, cut a 19" hole between the roof rafters. Follow the steps for the opening size needed for your specific application.

### Step 1

Choose location for the solar attic fan, south exposure is best. If a southern exposure IS not feasible for your installation, the fan can be installed on any other exposure and the solar panel adjusted to capture maximum sunlight.



### Step 2

#### DETERMINE SIZE OF HOLE NEEDED FOR YOUR INSTALLATION:

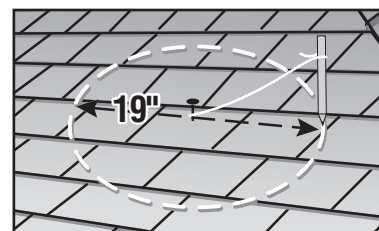
On 24" on center construction, center the fan between the rafters and cut a 19" hole. On 16" on center construction, the installer can either cut a 14" hole between the rafters or cut a 19" hole with the roof rafter running through the hole (see illustration in step 4).

### Step 3

Hammer a nail at the center of the location chosen between rafters for the solar attic fan. The center of the unit should be about 2 feet down from the ridge.

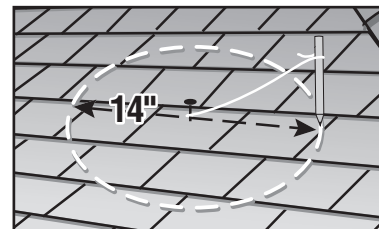
#### 19" HOLE

Attach a string to the nail. Measure 9.5" of string and attach a marking pen to the string, see diagram. Scribe a 19" circle onto roof shingles.



#### 14" HOLE:

Attach a string to the nail. Measure 7" of string and attach a marking pen to the string, see diagram. Scribe a 14" circle onto roof shingles.



#### Step 4

With a reciprocating saw, cut the diameter of the hole. **NEVER CUT THROUGH ANY ROOF RAFTERS. LEAVE ALL FRAMING MEMBERS IN PLACE.**

**19" Hole:** On 24" on center construction, center the fan between the rafters.

**14" Hole:** On 16" on center construction, the installer can either cut a 14" hole between the rafters or cut a 19" hole with the roof rafter running through the cut hole - do not cut the rafter (see illustrations below).

**IMPORTANT:** The solar attic fan must be installed between the roof rafters OR over a roof rafter. **DO NOT CUT THROUGH ANY FRAMING MEMBER.** Only remove roof sheathing.

**RECOMMENDED:**  
CUT HOLE  
BETWEEN RAFTERS

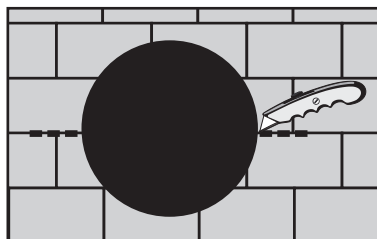


**OPTION:**  
16" ON CENTER  
WITH 19" HOLE

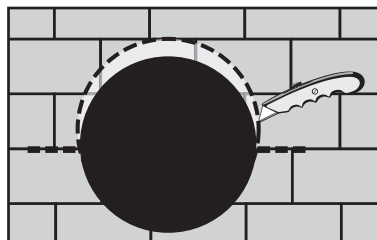


#### Step 5

**19" Hole:** With a razor knife, cut a four inch slit through the shingles and tar paper at the three and nine o'clock position of the flashing. This allows for the footprint of the flashing to be inserted under the shingles.

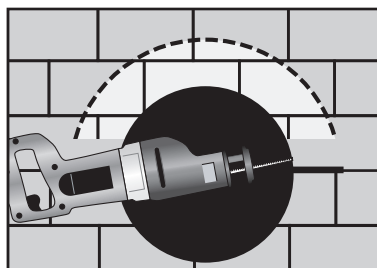


**14" Hole:** Additional shingles may also need to be removed on the high side towards the ridge to allow the flashing to slide over the hole.



#### Step 6

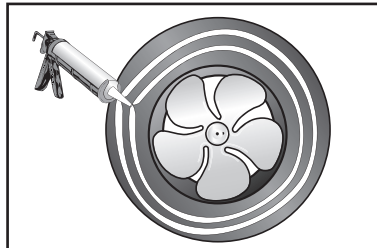
Insert the reciprocating saw blade sideways at the three o'clock position and start cutting the roofing nails up and around to the nine o'clock position. This process removes the nails that will prevent the flashing footprint from sliding up underneath the shingles.



#### Step 7

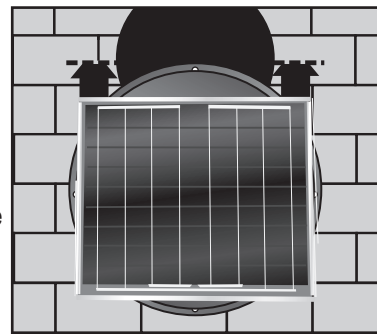
Caulk underside of flashing with the provided caulking material (C). Two concentric rings of caulking material is sufficient.

**NOTE:** Installation on tile roofs will require the use of a skirt.



#### Step 8

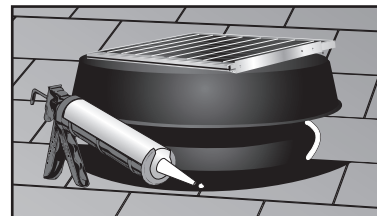
Taking care not to smear caulk on the exposed shingles, slide flashing under tar paper and shingles and force flashing up until the shingles come in contact with the raised portion of the flashing. The bottom side of the flashing will be on top of the shingles. Secure flashing with provided (6) Phillips head screws through the pre-drilled holes on the flashing footprint.



**NOTE:** Local Building Code requirements may specify anchoring that requires additional screws installed in the flashing.

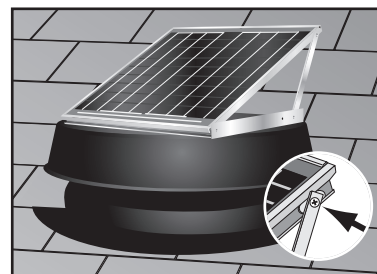
#### Step 9

Caulk over the screw heads that are exposed to the weather. Use remaining caulk seal the areas where the 4" slits were made and around the area where the shingles meet with the raised area of the flashing.



#### Step 10

Adjust the solar panel to the position it will collect the most sunlight throughout the day (the panel can be left in the down position). To adjust the solar panel, remove the (2) self-tapping screws on either side of the bracket. Lift up the solar panel and line up the pre-drilled hole on the bracket arm to one of the two pre-drilled holes on the "L" bracket attached to the housing. Re-attach the (2) self tapping screws on both sides.



**NOTE:** Some 10 watt panels may have a clip/screw assembly. To adjust panel on these units, loosen, but do not remove, the assembly located on each side of the solar panel bracket. Adjust the solar panel to desired position and tighten screws (see inset).

**IMPORTANT:** Prior to an anticipated hurricane or high wind event, the solar panel must be secured with screws in the flat position.

*This information is supplied in good faith, without recommendation as to its use and without charge. No guarantee of results of any use of the information is to be implied, since the conditions of use are beyond our control.*



5294 Tower Way  
Sanford, FL 32773

The Hex Ball Adapter is for use where manual operation is required.

---

**STEP 1**

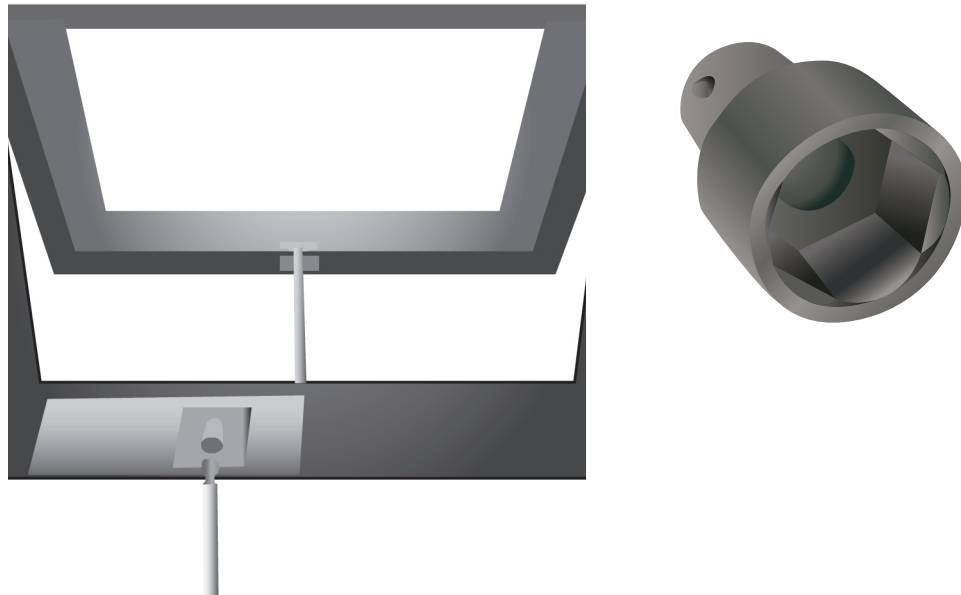
Attach the Hex Ball Adapter to the control rod.

---

**STEP 2**

Use the Hex Ball Adapter end of the control rod to manually ventilate the skylight.

---





**WARNING:** Please take the time to read through the ENTIRE instructions prior to starting any work. Not following the instructions will invalidate the warranty.

**Installation should only be completed by individuals skilled with the necessary tools for installation. If you doubt your skills, please consult a qualified installer.**

## Tools Needed:

- Safety Glasses
- Saw
- Hammer
- Utility Knife
- Crow Bar
- Sealant Gun
- Tape Measure
- #8 x 1 5/8" Truss Head Drywall Screws
- Shingles
- Roofing Felt
- Sealant
- 2" x 4" Lumber
- Plywood/Drywall
- Level/Plumb Bob
- Putty Knife or Suitable Tool for Topping Sealant
- 12 Feet of Peel and Stick Flashing

## Important Precautions:

Skylights are subject to condensation caused by warm moist air rising from the room below. Insulate the light shaft and other areas surrounding skylight to minimize condensation. In some cases, the light shaft may require special ventilators to remove moist air.

- To prevent roof failure and possible injury, be sure the skylight remains adequately supported by the roof, if either headers or rafters are setback from edge of the rough opening.

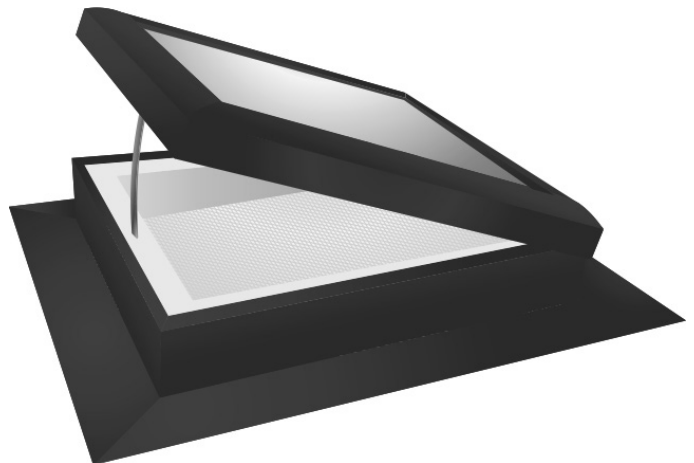
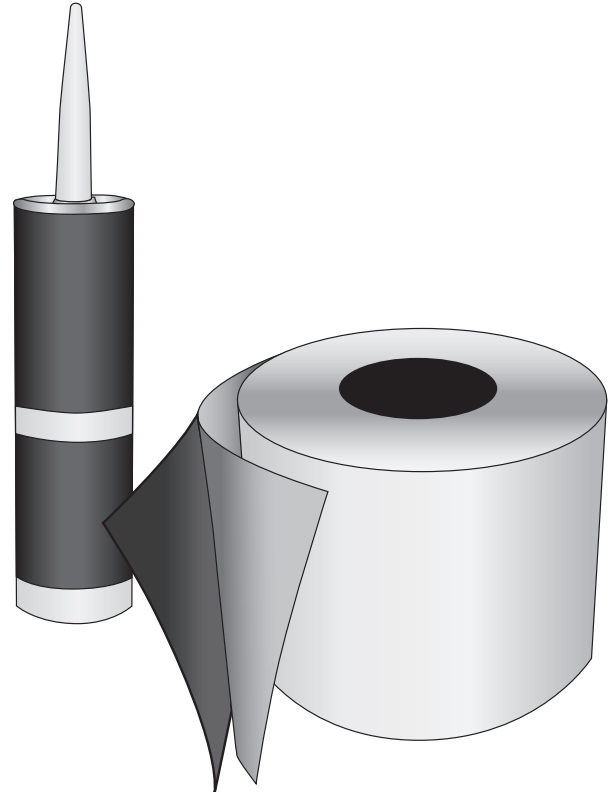
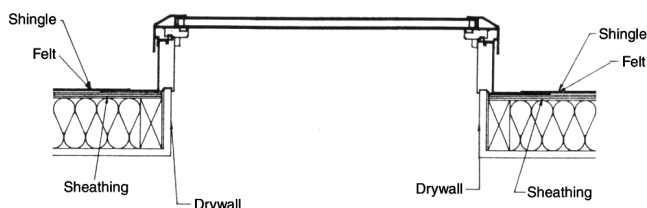
## Important Warnings:

- Do not cut roof trusses. If trusses must be cut, obtain expert guidance from an architect, structural engineer, or roof truss manufacturer. Work from professionally prepared plans.
- Support the roof with braces before cutting rafters, to prevent roof failure which can cause severe injury and structural damage.
- Obtain guidance from an architect or structural engineer, if more than one rafter is cut to prevent roof failure and possible injury.

## Important Safety Notes:

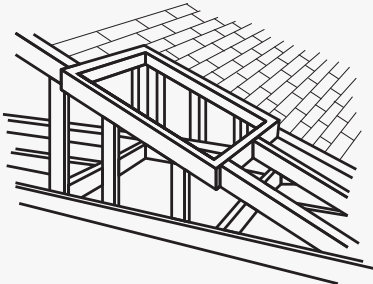
- Remove nails and other obstructions to prevent them from being thrown while cutting.
- Be sure electrical wires, pipes, and other building components will not be cut or damaged.
- Wear eye protection and follow safety procedures recommended by the saw manufacturer.
- To avoid injury or damage, use blocks or bracing to prevent cutout section from dropping as it is freed.
- Stay clear of cutting area while sawing; be especially careful of hand placement and falling debris on the interior, underneath the work area.
- Safely Handle, use, and dispose of per Safety Data Sheet

## Horizontal Cross Section:

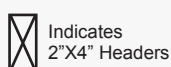




## Building Light Tunnel

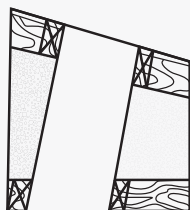


In structures that have a space between the ceiling and the roof such as an attic or crawl space, a light tunnel must be built. Nailers of 2" x 4" must be used to frame the opening between the roof header and the ceiling header. These will be used for attaching the finishing material, i.e., drywall, wall board, plywood, etc. The light tunnel should be wrapped with insulation for optimum performance. Select the desired shaft, and frame accordingly.



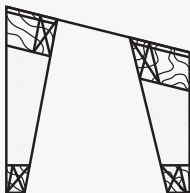
### ANGLED SHAFT

An angled shaft is required when the skylight cannot be positioned directly above the area to be lighted because of existing pipes, electrical wiring, duct work, or roof limitations such as ridges or valleys. Locate the skylight as close to the desired areas as possible, and then build the shaft on an angle to the ceiling opening.



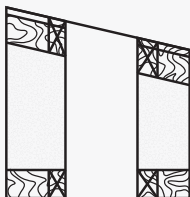
### SPLAYED SHAFT

The splayed shaft is used to permit the greatest light exposure. This is done by making the ceiling opening larger than the roof opening.



### STRAIGHT SHAFT

A straight shaft from the roof to ceiling can be used. If the roof is flat the ceiling and roof openings will be the same dimension. With a pitched roof, however, the roof opening will be slightly larger than the ceiling opening.



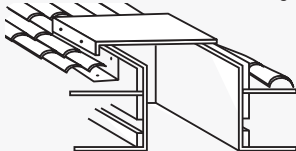
## Built-Up Roofs:

(Use 4" model or check local building codes.)

Carefully apply hot pitch or sealant to the surrounding area and base of curb flange. Cover with rock.

## Barrel Tile Instructions:

(Use 4" or 6" curb. Check local building codes.)



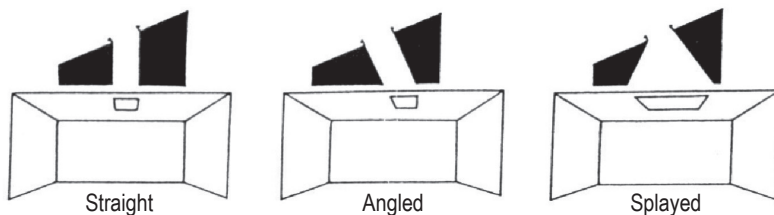
After locating skylight position on roof, carefully remove barrel tiles and cut rough opening. Center skylight over rough opening, and secure into place using pre-punched holes in flange. Mop in roll roofing over flashing. Cement tiles on roof around curb and skylight assembly. Finish inside curb with drywall and trim.

## Planning

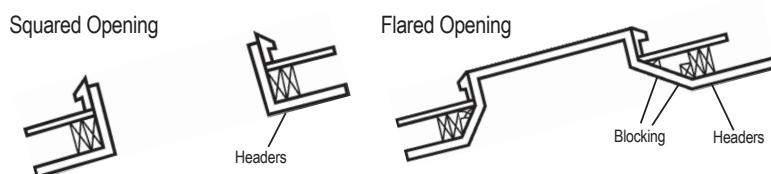
### Step 1 - Identify Desired Location

- Overhead Placement: Consider natural light, sunshine and shade.
- Eye Level Placement: Consider natural light, sunshine and shade. To optimize the view, the eye level is from 56" to 67" from the floor.
- Obstructions: Consider HVAC duct, gas/water pipes, and electrical devices.

### Step 2 - Determine Type of Light Shaft



### Determine the Type of Header Setback (optional)

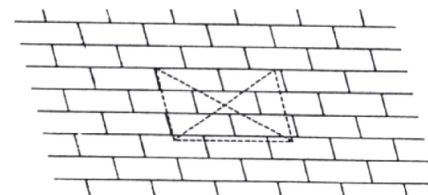


## Prepare Rough Opening

### Step 3 - Measure and Mark Corners

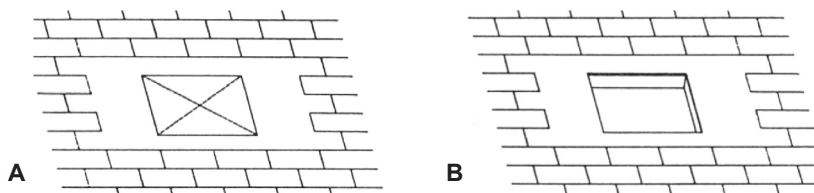
Locate position by measuring from a known point such as a vent passing through the roof. Mark rectangular opening.

**IMPORTANT:** Corners may be located by driving nails through roof from inside.



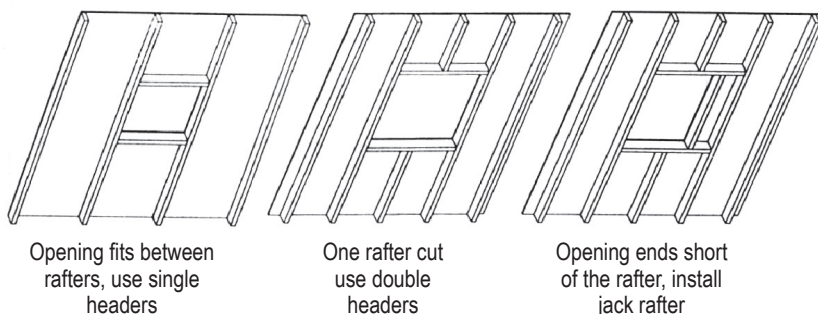
### Step 4 - Remove Shingles and Nails

Remove shingles and nails from area at least 10" back from opening. Mark rough opening (A) by stretching and snapping a chalkline, and cut opening (B).



### Step 5 - Install Headers

Based on size of opening and rafter pattern.



# Install Skylight

**Step 6** - Frame out the inside of the roof opening with double headers at the top and bottom of the opening. Butt 2x4's against the outside of the truss or rafters that frame the opening, and nail into place to provide extra stability when mounting the skylight. Any rafter or truss that runs through the skylight opening must be cut to meet local building codes. (Figure 1).

**IMPORTANT NOTE:** If the opening is too big, fill it in with the proper lumber to the suggested rough opening size or smaller. Install roofing felt and shingle to bottom of the opening.

**Step 7** - Installation of sealant, on the top of the roof deck and the underside of the skylight flange.

Apply a 1/4" x 1/4" minimum bead to the top of the deck of the roof surrounding the opening. Bead should pattern the width of the flange. 4". (Figure 2).

**Step 8** - Apply a liberal amount of sealant to the surrounding roof opening. Carefully center the skylight into place. Using pre-punched holes in flange, secure to roof surface using #8x1 5/8" Truss Head Drywall Screws. Apply liberal amount of sealant to cover each hole, fastener, and the outside of curb flange.

**Pitched Roofs:** Replace shingles, covering base of curb flange. For impact glass units, use #10 x 1 5/8" Truss Head Drywall Screws (supplied).

**Step 9** - Once the skylight is set in the bead of sealant, firmly press/ apply (insuring complete adhesion). Apply the 4" wide Peel and Stick Flashing Tape with 2" on the top of the flange and 2" on the roof deck, covering the seam between the edge of the flange and the roof deck all the way around the skylight - starting with the bottom then the sides and finishing at the top. This will create a secondary watertight seal. (Figure 3).

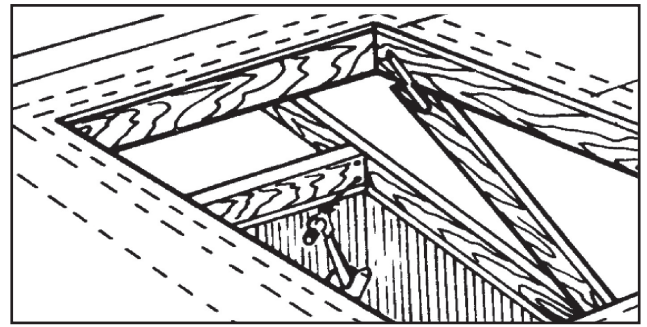


Figure 1

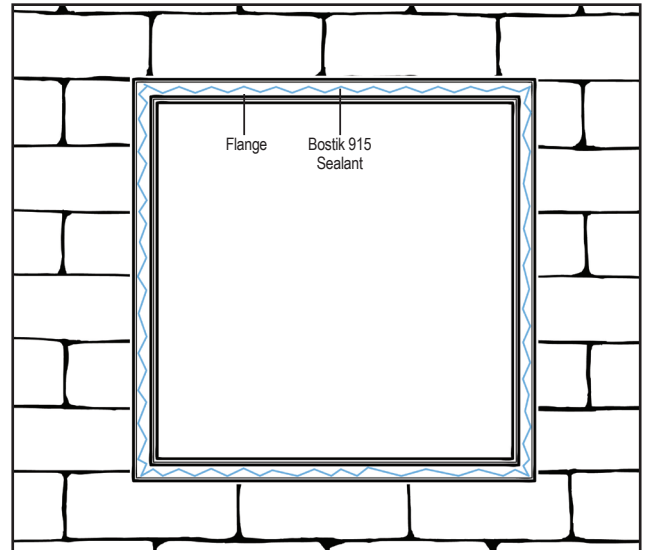


Figure 2

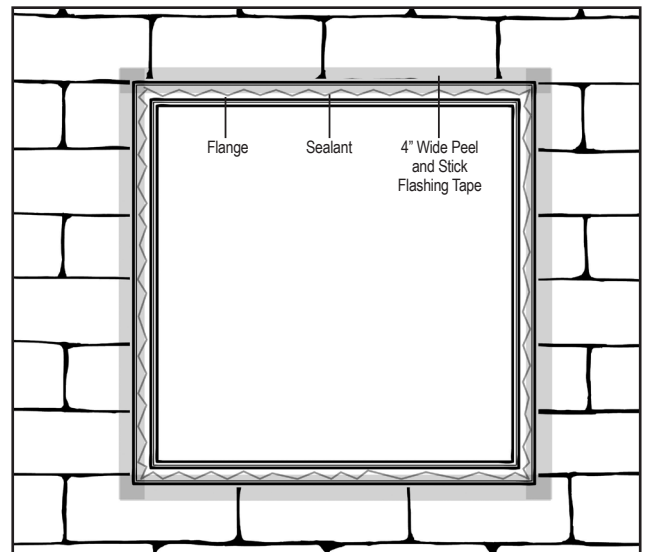


Figure 3

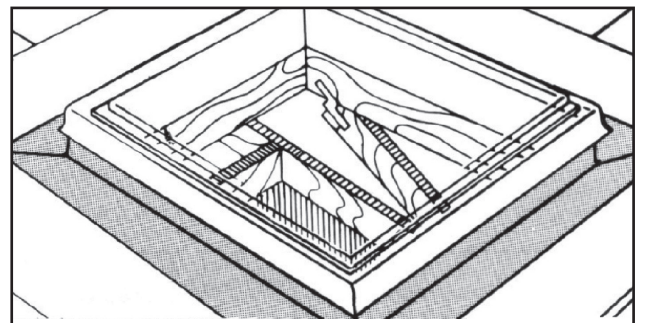
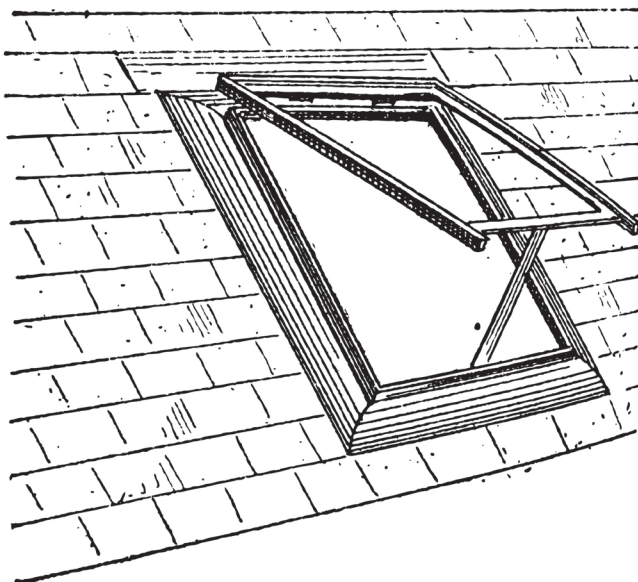


Figure 4





Kennedy  
Skylights

## Marquis / Sentry Series Skylights Limited Warranty

5294 Tower Way, Sanford, FL 32773 • 407.330.5150 • Fax: 407.330.5125 • 800.280.2545 • [www.kennedyskylights.com](http://www.kennedyskylights.com)

KENNEDY SKYLIGHTS warrants the SUN WISE standard insulating glass in KENNEDY SKYLIGHTS' products for a period of TWENTY-FIVE (25) YEARS from the date of purchase. KENNEDY SKYLIGHTS warrants to the \*End-user that the insulated glass unit will not develop a material obstruction of vision due to seal failure. ONE (1) YEAR limited warranty on electric components and pleated shades. During this time period KENNEDY SKYLIGHTS' obligations under this warranty shall be limited to, at its option, replacement of the insulating glass or component, or replacement of the insulating glass in sash (FOB the original point of purchase or to the end user).

THIS WARRANTY DOES NOT APPLY TO GLASS CRACKING, SHATTERING, BREAKING OR SCRATCHING, HOWEVER CAUSED, AND IT WILL NOT APPLY TO ANY INSTALLATIONS WHERE LOADING APPLIED TO THE UNIT COULD BE EXPECTED TO EXCEED THE STRUCTURAL PERFORMANCE RATING OF THE UNIT WITHOUT PRIOR WRITTEN APPROVAL OF DESIGN BY KENNEDY SKYLIGHTS. THIS WARRANTY ALSO WILL NOT APPLY TO ANY INSTALLATIONS AT AN ALTITUDE OVER 3,500 FEET ABOVE SEA LEVEL UNLESS BREATHER TUBES HAVE BEEN INSTALLED. KENNEDY'S SUN WISE UNITS FOR INSTALLATIONS AT AN ALTITUDE OVER 3,500 FEET WILL NOT BE ARGON FILLED.

THE WARRANTY ON SUN WISE INSULATED GLASS UNITS IS VOID IF ANY FILM IS APPLIED TO THE GLASS SURFACE. CONDENSATION ON THE INTERIOR (ROOM SIDE) GLASS SURFACE IS A SIGN OF HIGH HUMIDITY. THIS IS NOT A PRODUCT DEFECT.

For a period of TEN (10) YEARS from date of purchase, KENNEDY SKYLIGHTS warrants to the \*End-user the Sentry Plastic Series Skylights to be free from defects in workmanship and materials. During this time period, if a KENNEDY skylight is found to be defective, KENNEDY SKYLIGHTS' obligations shall be limited to, at its option, replacement of the component part or a replacement skylight (FOB the original point of purchase or to the \*End-user), or repair of the skylight without charge for material or labor. The insulated glass component, electric components (including motorized operators and rain sensors, and the pleated shades) are warranted separately from the skylights as described by this limited warranty.

THE POLYCARBONATE MATERIAL USED IN THE SENTRY SERIES KENNEDY SKYLIGHTS IS SENSITIVE AND SCRATCHES EASILY. AS A CONSEQUENCE, THIS WARRANTY DOES NOT APPLY TO SCRATCHES OR ABRASIONS DUE TO IMPROPER OR INSUFFICIENT HANDLING, STORAGE, INSTALLATION, MAINTENANCE, CLEANING OR SERVICES AS DETERMINED BY KENNEDY.

THIS WARRANTY DOES NOT COVER ANY COSMETIC CHANGES IN SKYLIGHT, INCLUDING, BUT NOT LIMITED TO: PITTING, HAZING, PAINT FINISH, DISCOLORATION.

SOME VISUAL DISTORTION MAY BE PRESENT DUE TO THE NATURE OF THE MANUFACTURING PROCESS AND MATERIAL USED. IN ADDITION, CONDENSATION MAY RESULT FROM DIFFERENCES BETWEEN INSIDE AND OUTSIDE TEMPERATURES. NEITHER OF THESE CONDITIONS ARE PRODUCT DEFECTS.

\*End-user is the natural or legal entity or person who owns the product and has not acquired the product for resell or to install the unit in its business.

### EXCLUSIONS AND LIMITATIONS

The warranty period begins from the date the KENNEDY SKYLIGHTS' product was purchased and must be substantiated with the original invoice or sales receipt. If the purchase date cannot be substantiated, the warranty period will begin on the date of manufacture as indicated on each Marquis product (glass). Sentry product (plastic) has no date of manufacture on the product and an original invoice or sales receipt is required.

This warranty does not cover any labor cost associated with the installation of replacement products or components should KENNEDY choose not to repair the product. The providing of replacement products or components shall not extend the original warranty period. KENNEDY reserves the right to provide a similar replacement product or component if the original version is no longer available at the time of the complaint.

(continued on reverse side)



In addition to the conditions, exclusions and limitations set forth in this limited warranty, no warranties are made which cover failures or operating difficulties due to accident, abuse, misuse, alteration, misapplication, faulty building construction or design, exposure to the elements, improper or insufficient handling, storage, installation, maintenance or service. Also excluded from the above warranties are failures or operating difficulties resulting from exposure to corrosive fumes or condensates, subjection to abnormal stress from localized application of heat, excessive vibration or movement of buildings or foundations or to other abnormal physical stress and use in ships, boats, watercraft vehicles, trailers, campers, saunas, swimming pools, greenhouse enclosures or other high humidity areas. Selection and purchase of KENNEDY products which conform to all applicable building codes and local ordinances is the sole responsibility of the architect, building contractor, or homeowner; KENNEDY assumes no responsibility for compliance. Consult your local building code officials for specific requirements.

THE WARRANTIES PROVIDED ABOVE SHALL NOT APPLY TO INSTALLATIONS WHICH ARE DONE OTHER THAN IN ACCORDANCE WITH KENNEDY'S APPLICABLE WRITTEN INSTRUCTIONS INCLUDING SPECIFICALLY, BUT NOT LIMITED TO, INSTALLATIONS, REPRESENTING A PLACEMENT WHICH IS NOT SQUARE, PLUMB AND LEVEL, WHICH DOES NOT CONFORM TO SPECIFIED PITCH REQUIREMENTS OR IN WHICH AN INCOMPATIBLE SEALANT OR CLEANING AGENT IS USED.

The warranties provided above shall not apply when KENNEDY is furnishing units or components in a size which is greater in width or greater in height than the largest standard size shown for that species in KENNEDY's printed price catalog for KENNEDY products. In the case of such greater size, there shall be no warranty of any kind, whether implied or otherwise.

THE EXPRESS WARRANTIES SET FORTH HEREIN ARE IN LIEU OF ALL OTHER WARRANTIES, EXPRESSED OR IMPLIED, INCLUDING, WITHOUT LIMITATION, ANY AND ALL WARRANTIES OF MERCHANTABILITY OR FITNESS FOR A PARTICULAR PURPOSE. ALL SUCH OTHER WARRANTIES, TO THE EXTENT PERMITTED BY LAW, ARE HEREBY DISCLAIMED AND EXCLUDED BY KENNEDY. ANY IMPLIED WARRANTIES WHICH ARE NOT EXCLUDED HEREBY, DUE TO OPERATION OF LAW, ARE LIMITED IN DURATION TO THE PERIOD OF COVERAGE OF THE EXPRESS WARRANTY PROVIDED HEREIN FOR THE PRODUCT WARRANTED. THE REMEDIES SET FORTH ABOVE ARE THE SOLE AND EXCLUSIVE REMEDIES PROVIDED HEREUNDER, AND KENNEDY SHALL NOT BE LIABLE FOR COSTS OF SHIPPING, APPLICABLE TAXES OR ANY OTHER INDIRECT, SPECIAL, INCIDENTAL OR CONSEQUENTIAL DAMAGES, INCLUDING, BUT NOT LIMITED TO, THE PAYMENT OF ANY COSTS OR EXPENSES OF DISASSEMBLY, REMOVAL OR REINSTALLATION OF THE PRODUCT OR ANY PART, INCLUDING, WITHOUT LIMITATION, THE INSULATING GLASS, ANY COSTS OR EXPENSES RELATING TO PAINTING, STAINING OR ANY OTHER ACTIVITY NECESSARY IN FINISHING THE REINSTALLATION OR DAMAGE OR LOSS TO OTHER PROPERTY.

Some states do not allow limitations on how long an implied warranty lasts, so the above limitation on the duration of any implied warranties not excluded hereby, due to the operation of law, may not apply to you. Some states do not allow the exclusion or limitation of incidental or consequential damages, so the exclusion of incidental and consequential damages may not apply to you. This warranty gives you specific legal rights, and you may also have other rights which vary from state to state. NO DISTRIBUTOR, SALESPERSON, DEALER OR OTHER REPRESENTATIVE OF KENNEDY PRODUCTS HAS THE AUTHORITY TO ALTER OR CHANGE THESE WARRANTIES OR TO MAKE ANY OTHER WARRANTY EITHER ORALLY OR IN WRITING.

#### **CLAIM PROCEDURE**

To make a claim under this Warranty, you must contact the contractor who installed the product or the KENNEDY distributor or dealer from whom the product was purchased, or, if persons are not known, contact:

#### **KENNEDY SKYLIGHTS**

5294 Tower Way  
Sanford, FL 32773

**407.330.5150 or 800.280.2545**

To assist us in providing you with better service, when telephoning, please indicate that you are calling regarding a warranty matter.

Please provide the following information to the person contacted:

- (a) Your name, address, and telephone number.
- (b) A description of the product for which the claim is being made.
- (c) The date the product was purchased (or approximate date if exact date is not known).
- (d) The name of the KENNEDY dealer or distributor from whom the product was purchased (if known).
- (e) The nature of the product complaint.
- (f) In the case of insulating glass, provide the date of manufacture as stamped on the metal spacer between the panes of glass.



Kennedy  
Skylights

## Tubular Skylights / Solar Attic Fans Limited Warranty

5294 Tower Way, Sanford, FL 32773 • 407.330.5150 • Fax: 407.330.5125 • 800.280.2545 • [www.kennedyskylights.com](http://www.kennedyskylights.com)

**Kennedy Tubular Skylights have a 25-year warranty against  
manufacturing defects and deterioration.**

**Kennedy Solar Attic Fans have a 25-year warranty  
on the solar panel, motor, and housing.**

**IMPORTANT: PLEASE COMPLETE AND MAIL THE CARD BELOW AS SOON AS  
YOUR TUBULAR SKYLIGHT OR SOLAR ATTIC FAN IS INSTALLED.** This card will serve as  
proof of your purchase, should you misplace your original invoice.

The manufacturer warranties this product and its components to be free from  
defects in material and manufacturer's workmanship for a period of twenty-five years  
from the date of installation. This warranty is subject to proper installation of the unit in  
accordance with the manufacturer's written installation instructions. The manufacturer will  
not be liable for any special, incidental or consequential damages in any way related to,  
or arising out of, defects in, or damage to, the tubular skylight / solar attic fan.

This warranty gives you specific legal rights, and you may have other rights which vary from  
state to state concerning exclusion or limitation of incidental or consequential damages.

*To register your product please fill out the form below and mail it to:  
Kennedy Skylights • 5294 Tower Way, Sanford, FL 32773*

### R E G I S T R A T I O N

Kennedy Product Installer: \_\_\_\_\_

Customer Name: \_\_\_\_\_ Date of Purchase: \_\_\_\_\_

Address: \_\_\_\_\_

City: \_\_\_\_\_ State: \_\_\_\_\_ Zip: \_\_\_\_\_

Phone: \_\_\_\_\_ Email: \_\_\_\_\_

#### Customer Survey

Are you satisfied with the performance?    Y       N

What made you choose our product?

Were you satisfied with the installation job?    Y       N





# KENNEDY SKYLIGHTS

*Beauty, Quality, Affordability*

*Experience the Joys of  
Daylighting...*

